

	6609 APOLLO	
	7 Kukush Str. Sofia 1309, Bulgaria, tel: +359 2 8129328; fax: +359 2 8129440 www.casino-technology.com	

Maintenance

APOLLO

All rights reserved!

Casino Technology AD may alter any part of this manual without prior notification.

	6609 APOLLO	
	7 Kukush Str. Sofia 1309, Bulgaria, tel: +359 2 8129328; fax: +359 2 8129440 www.casino-technology.com	

Contents

1. Machine initialization3
2. Touch screen activation4

1. Machine initialization

What the initialization does:

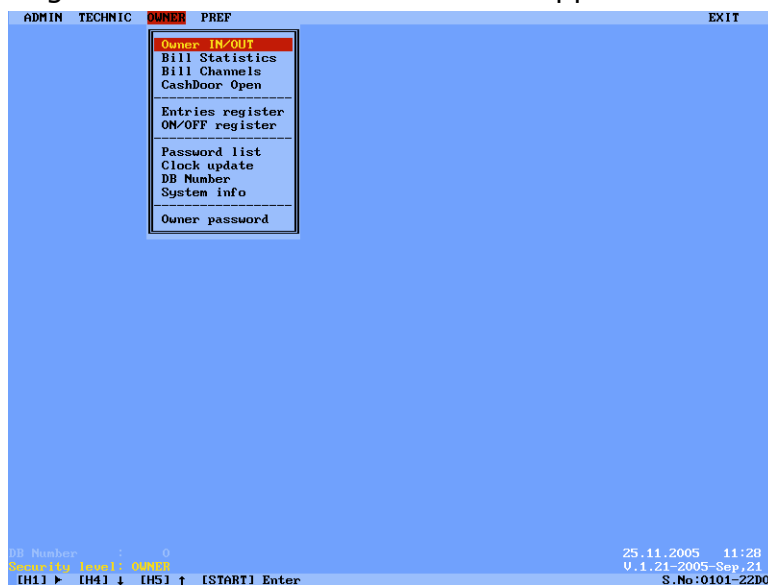
Clears Up the RAM memory, including the game (slot and/or poker statistics), all the registers in Admin and Owner menus, as well as credits remained unpaid. The Total In/Out statistics, game settings in the Pref menu and passwords are preserved.

When you have to initialize the machine:

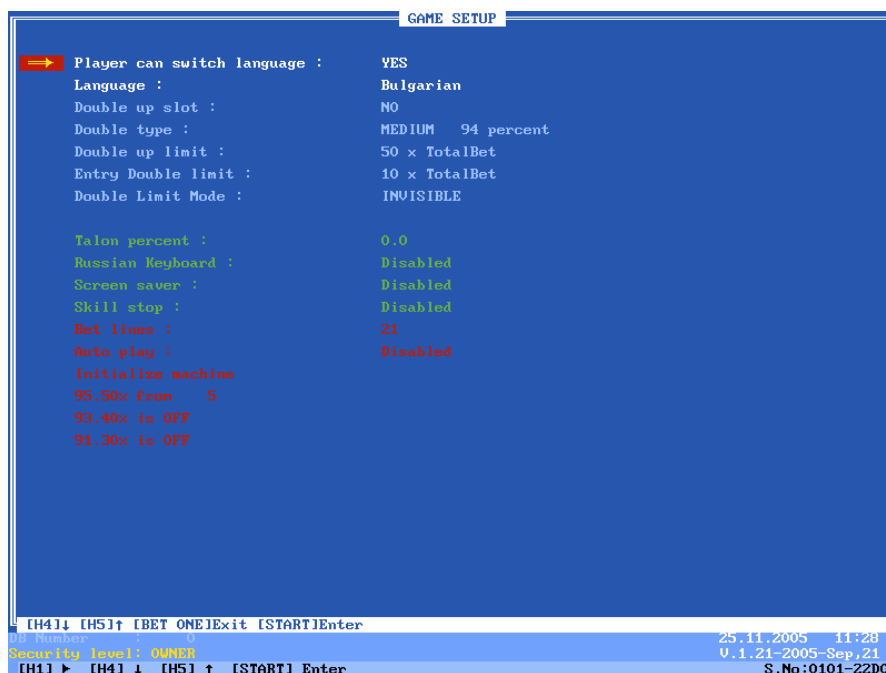
- Always when you start a machine on new place.
- Always when you change the game program in the machine.
- When you want to clear up the RAM memory.

1.1 Start up the machine

1.2 The general administrative menu will appear.



1.3 Choose the Pref menu by Hold1 and the Game Setup submenu by Hold4 / Hold5.



1.4 Choose Initialize Machine line by Hold4 /Hold5 and press Start.

1.5 Enter the password for initialization (in most of the games 3222 by default). The Warning window will appear. Confirm initialization by pressing Start. Otherwise press Bet.

The program will reload.

2. Touch screen activation

Turn the Main key. The Personal identification menu will appear.

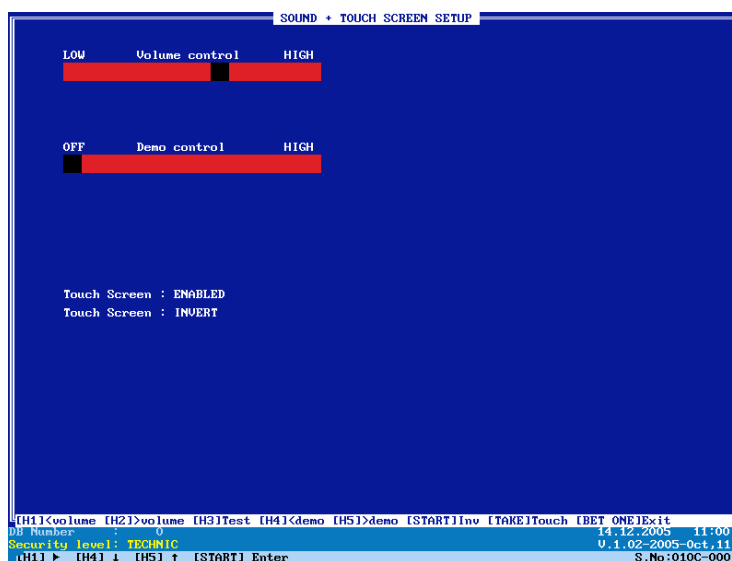
Press Start to enter the TECHNICIAN level of security. Enter the password (by default, the password is 00). Press Hold5. The main service screen appears with the ADMIN and TECHNICIAN menus.

Select the ADMIN menu by means of Hold1.

Select the " Sound + Touch" submenu by means of Hold4 or Hold5. Press Start.

If the Touch screen: DISABLED – press the LINES button to change it to ENABLED.

If the Touch screen: NORMAL - press the START button to change it to INVERT – for 19" TFT monitors (3M Micro touch). For 17" TFT monitors let it NORMAL.



Exit the submenu by pressing the BET button. Go to the EXIT menu by means of Hold1 and press START twice to save the settings and to exit the service menus. The program will reload.

Enter the TECHNICIAN level of security (repeat items 1 and 2).

In the Technician menu, select the "Touch calibration" submenu by means of Hold4 or Hold5. Press Start. You will see a dark screen with small yellow square in its left bottom edge. Press it. If the touch screen is active, the yellow square should appear in the right top edge of the screen. Press it again. After that the program should return to the main service screen.

Go to the EXIT menu by means of Hold1 and press START twice to save the settings and to exit the service menus.

The program will reload with the enabled and working touch screen.