



# MEI CXB2 Parts Manual



## Introduction

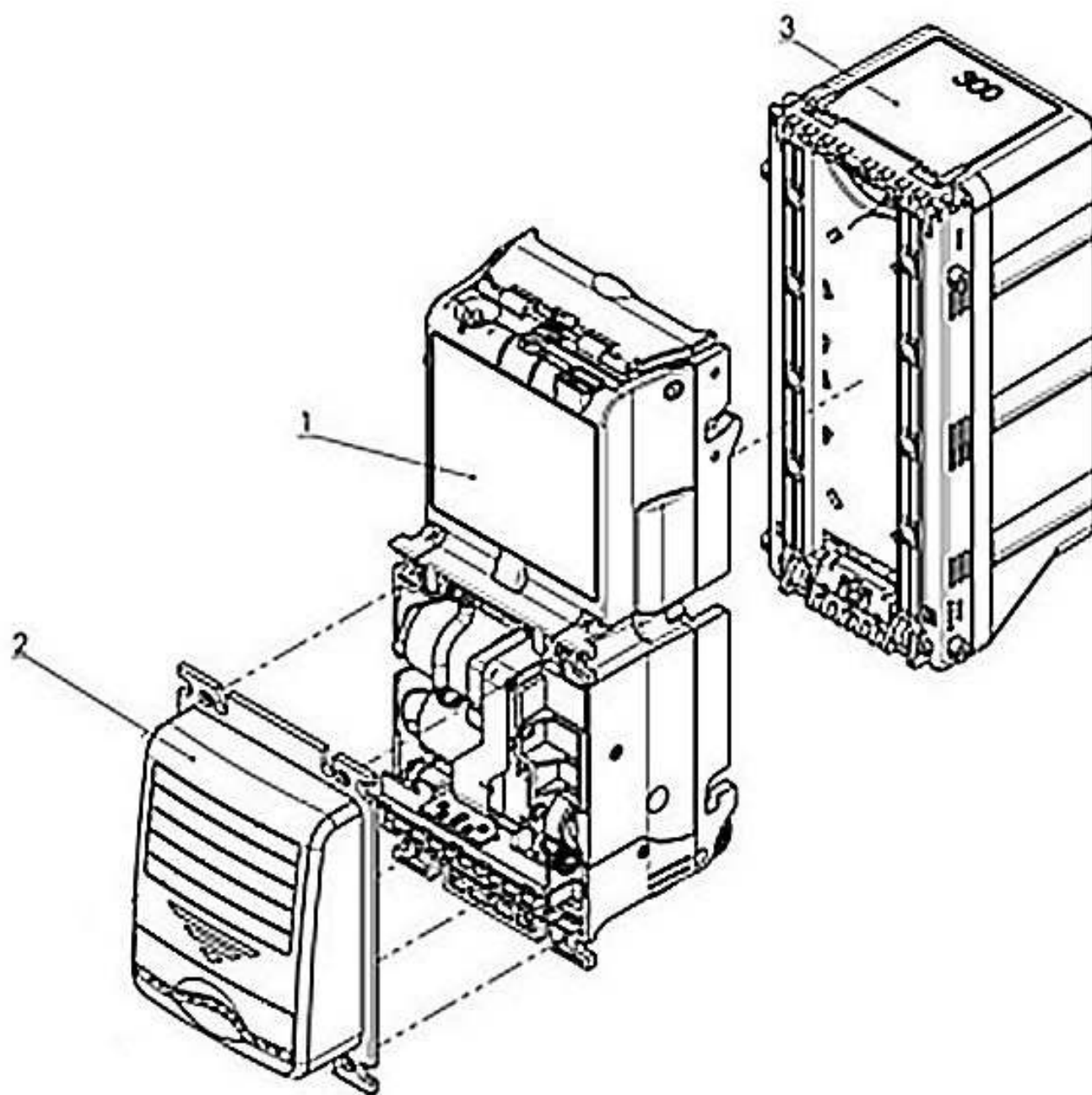
This document provides information about assemblies, sub-assemblies and individual parts for CXB2 validators. It is intended to assist in Customer Service, Technical Support, Product Repair and Parts Ordering.

Parts lists are organized in a hierarchical fashion. Top level assemblies for each validator are listed first. Common subassemblies follow thereafter.

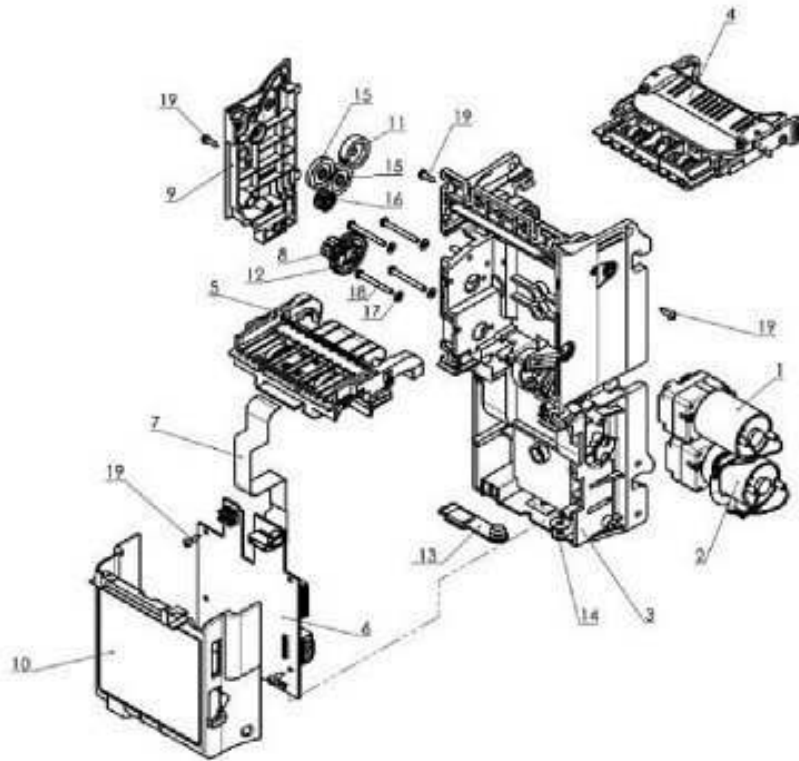
Example: Find part number for the Lower Guide Assembly of **SM07.22.000**.

N/A = Not Available.

This manual is intended only to assist the reader in the use of this product and therefore Crane Payment Solutions shall not be liable for any loss or damage whatsoever arising from the use of any information or particulars in, or any incorrect use of the product. Crane Payment Solutions reserve the right to change product specifications on any item without prior notice.

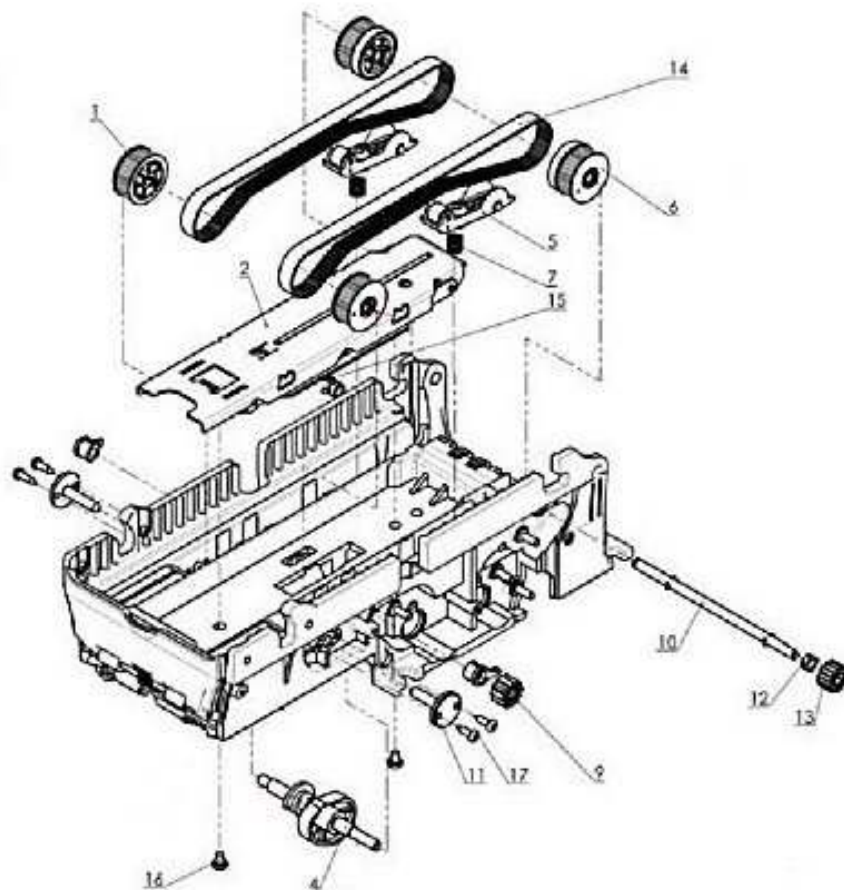


Item #	ASSEMBLY NAME
1	MAIN BODY ASSEMBLY
2	BEZEL ASSEMBLY
3	CASSETTE ASSEMBLY

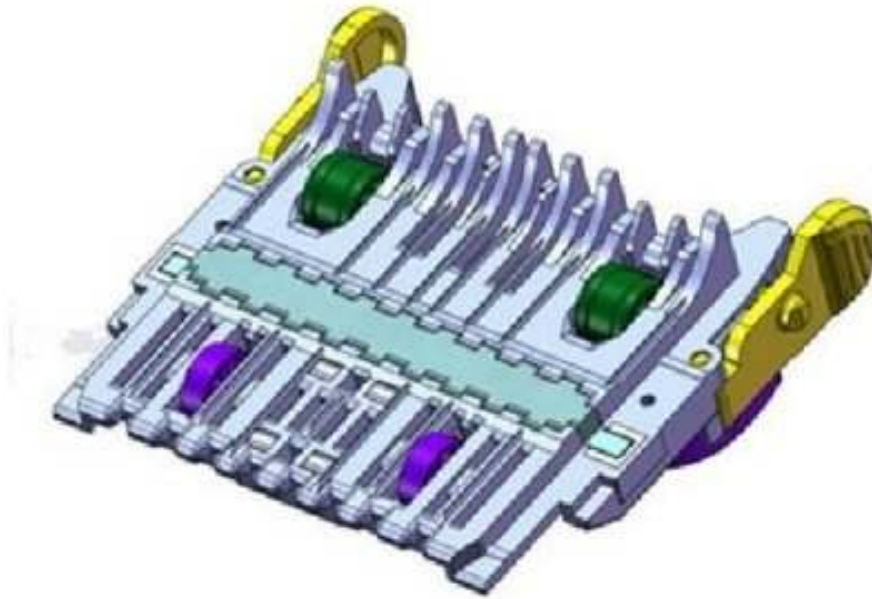


MAIN BODY ASSEMBLY		
Item	Part Number	Part/Assembly Description
1	FL04.20.000-29P	S CXB MOTOR ASSY, w/HARNESS, TRANSPORT
2	MM01.14.000-04P	S CXB MOTOR ASSY, w/HARNESS, STACKER
3	SM07.23.100P	S CXB MAIN BODY ASSEMBLY WITH STACKER
4	SM17.21.000P	S CXB GUIDE ASSEMBLY, FIXED, UPPER
5	SM17.22.100P	S CXB GUIDE ASSEMBLY, FIXED, LOWER
6	SM17.51.300P	S CXB CONTROL BOARD, MDB
7	SM07.60.000-01P	S CXB CABLE, FLEX, UPPER GUIDE ASSY PK5
8	MM01.00.010P	S CXB GEAR, 12 TEETH, SCISSOR ARM PK25
9	SM07.00.004P	S CXB COVER, GEAR BOX PK10
10	SM07.00.008-01P	S CXB COVER, CONTROL BOARD PK5
11	SM07.00.009P	S CXB GEAR 29 TEETH, TRANSPORT PK50
12	SM07.00.011P	S CXB GEAR, 30 TEETH, SCISSOR ARM PK50
13	N/A	PLUG
14	SM17.00.051P	S CXB GASKET, SERVICE BUTTON PK50
15	VU02.10.002P	S CXB GEAR 29 TEETH, THIN, TRANSPORT PK50
16	VU02.10.003P	S CXB GEAR 18 TEETH, TRANSPORT PK50
17	8203A10P	S CXB WASHER, FLAT, M2.5, PLAIN, ZINC PK100
18	8201043P	S CXB SCREW, M2.5x25, PHIL w/PATCH PK100
19	8204001P	S CXB SCREW, 3x3/8", TAP, PHIL, ZINC PK100

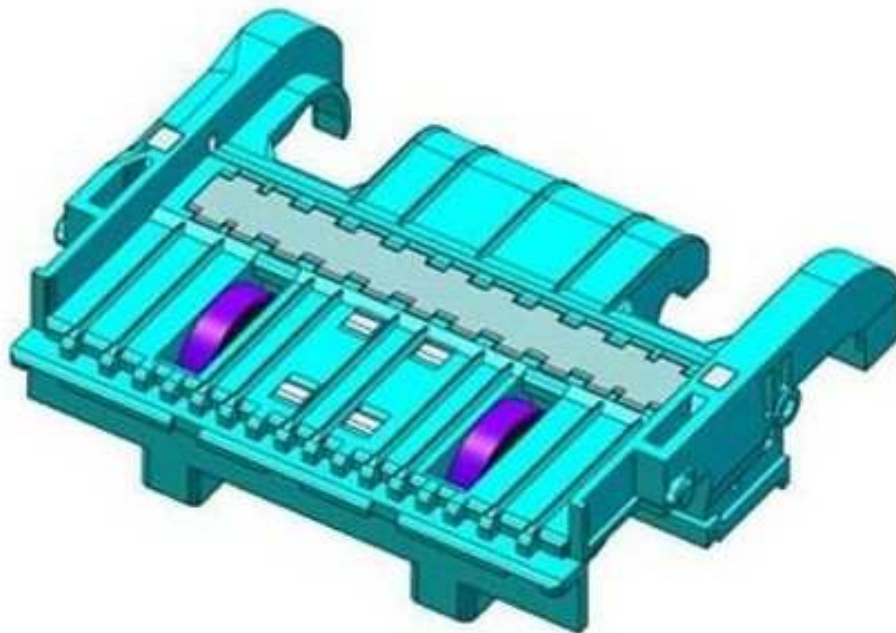




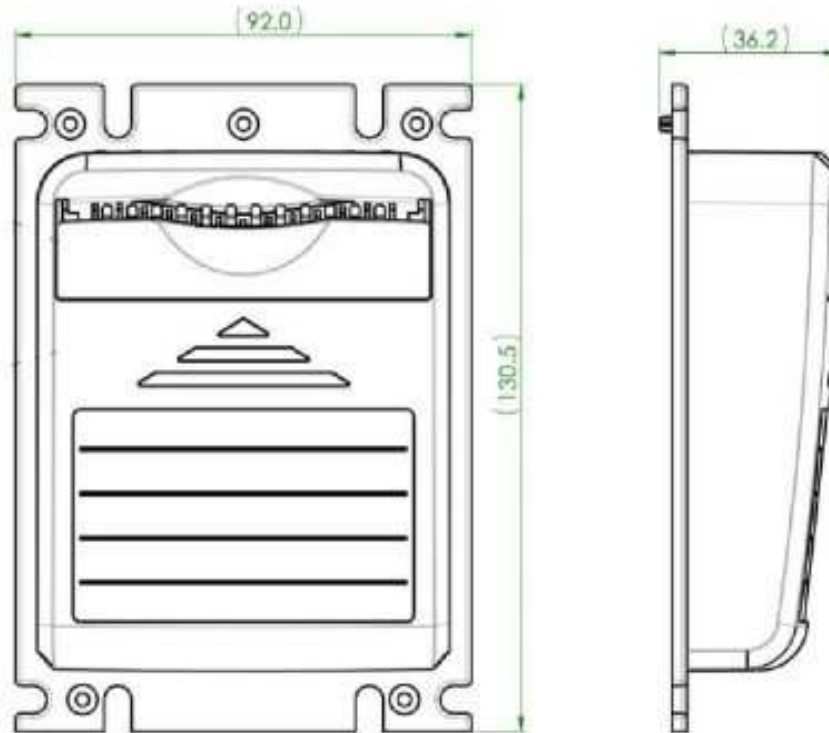
SM07.23.100P - S CXB MAIN BODY ASSEMBLY WITH STACKER		
Item	Part Number	Part/Assembly Description
1	N/A	S CXB PULLEY, STACKER BELT, WHITE PK10
2	MB05.11.000P	S CXB PLATE ASSEMBLY, PUSHER
3	N/N	CXB MAIN BODY ASSEMBLY WITHOUT STACKER
4	SM07.23.300P	S CXB SHAFT ASSEMBLY, PUSHER PLATE PK10
5	N/A	S CXB TENSION ASSEMBLY, BELTS, STACKER
6	N/A	S CXB PULLEY, STACKER BELT, BLACK PK10
7	BB01.50.010P	S CXB SPRING, TENSION PK100
8	N/A	BEARING
9	MM01.00.010P	S MSM GEAR, STACKER MOTOR PK10
10	SM07.23.001P	S CXB SHAFT, TRANSPORT PK10
11	N/A	S CXB SHAFT, STACKER
12	N/A	S CXB BEARING, SHAFT, TRANSPORT
13	VU02.10.003P	S CXB GEAR 18 TEETH, TRANSPORT PK50
14	8215002P	S CXB BELT, STACKER, 156MXL023 NG
15	8203920P	S CXB RING, RETAINING, D1500-3.2 PK50
16	8201044P	S CXB SCREW, M3x4,PAN,PHIL w/PATCH PK100
17	8204001P	S CXB SCREW, 3x3/8',TAP,PHIL, ZINC PK100



SM17.21.000P - S CXB GUIDE ASSEMBLY, FIXED, UPPER		
Item	Part Number	Part/Assembly Description
1	BB01.50.010P	S CXB SPRING, TENSION
2	SM01.00.025P	S CXB ROLLER, REMOVABLE GUIDE, WIDE
3	SM01.15.522P	S CXB LIGHT GUIDE, ARCHED PK100
4	SM07.21.001P	S CXB LATCH, LEFT PK10
5	SM07.21.001-01P	S CXB LATCH, RIGHT PK10

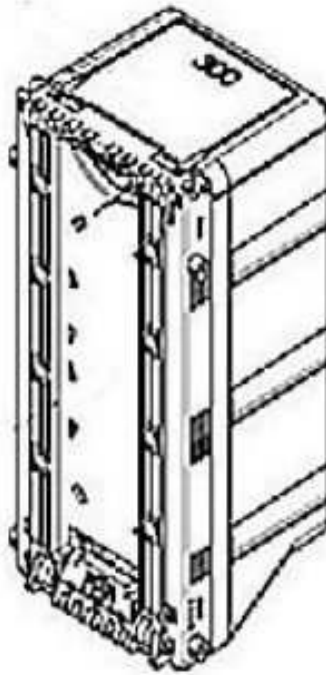


SM17.22.100P - S CXB GUIDE ASSEMBLY, FIXED, LOWER		
Item	Part Number	Part/Assembly Description
1	SM17.22.001P	S CXB COVER, GUIDE ASSEMBLY, FIXED PK10
2	SM17.53.000P	S CXB SENSOR BOARD, GUIDE ASSEMBLY, FIXED
3	SM01.15.521P	S CXB LIGHT GUIDE, CENTER



Item	Part Number	Part/Assembly Description
1	SM07.15.200P	S CXB BEZEL ASSEMBLY, LIGHTED





Item	Part Number	Part/Assembly Description
1	BX17.00.000-10	S CXB CASSETTE, 300 BILL, CUT

## TECHNICAL SUPPORT

Corporate Headquarters:

CPI Crane Payment Innovations  
3222 Phoenixville Pike, Suite 200  
Malvern, Pa. 19355

Tech Support Phone: 1-800-345-8172

Website: [www.cranepi.com](http://www.cranepi.com)  
<http://meigroup.com>



PAYMENT INNOVATIONS