

Crystal Web® **Cash Fever™** **Configuration Guide**



Copyright Notice:

© 2005, Atronic Systems. All rights reserved.

No part of this publication may be copied or distributed, transmitted, transcribed, stored in a retrieval system, or translated into any human or computer language, in any form or by any means, electronic, mechanical, magnetic, manual, or otherwise, or disclosed to third parties without the express written permission obtained from a properly authorized official of Atronic Systems.

DISCLAIMER

Atronic Systems makes no representation or warranties, express or implied, with respect to this publication, or any product of Atronic Systems, including but not limited to warranties of merchantability or fitness for any particular purpose. Atronic Systems reserves the right to make changes, enhancements, revisions and alterations of any kind to this publication or the product(s) it covers without obligation to notify any person, institution or organization of such changes, enhancements, revisions and alterations.

TRADEMARKS

This document may contain trademarks of Atronic Systems. All other brand and product names are trademarks or registered trademarks of their respective companies.

Contact Information:

Atronic Systems MIS S.A.M.
Gildo Pastor Center
7, rue du Gabian, BP 617
98013 Monaco Cedex
MONACO

Tel: +377-92056805
Fax: +377-92056806

Atronic Systems, Inc.
16537 N. 92nd Street
Scottsdale, AZ 85260
USA

Tel: +1-480-922-0707
Fax: +1-480-922-8877

Atronic Systems B.V.
Tuinweg 6-10
2132 DP Hoofddorp
THE NETHERLANDS

Atronic Peru S.r.l.
Systems Division
Av. Guardia Civil 810, Córpac
San Isidro
PERU

Tel: +51-1-2256501
Fax: +51-1-2257471

Atronic Systems GmbH
Parking 12
A-8074 Grambach
AUSTRIA

Tel: +43-316-7255 0
Fax: +43-316-7255 9

Atronic Argentina S.r.l.
Systems Division
C/o Jebsen & Co.
Avd L.N. Alem 693 – 5 Piso A
C1001AAB Buenos Aires
ARGENTINA

Tel: +598-2-7100468
Fax: +598-2-7100468

Contents

Contents	i
1 About This Manual	1
1.1 Scope.....	2
1.2 Target Audience	2
1.3 Conventions.....	3
1.4 Related Publications.....	3
2 Basics	4
2.1 Package Contents	4
2.1.1 Cash Fever™ PC	5
2.1.2 Connection Kit	6
2.2 Setting Up and Connecting the Cash Fever™ PC	7
2.2.1 Connections.....	7
2.2.2 Settings for Double-Sided Display	8
2.3 Software Updates	9
3 Installation	10
3.1 Hardware Requirements.....	10
3.2 Software Installation	11
3.2.1 Installation of DivX™	11
3.2.2 Installation of QuickTime™	11
3.2.3 Java RE Installation.....	12
3.2.4 Acrobat Reader Installation.....	12
4 Configuration	13
4.1 Cash Fever™ Startup.....	13
4.2 Cash Fever™ Shut-Down.....	13
4.3 Configuration Window	14
4.3.1 Meter 1 to Meter 4	15
4.3.2 Help Movie.....	16
4.3.3 Currency	17
4.3.4 Hit	18
4.3.5 Info.....	19
4.4 Aspect Ratio or Clipping	20
4.5 Demo Mode	20
Index	21

1 About This Manual

Welcome to the Cash Fever™ Configuration Guide. This manual describes the basic setup and configuration of the Cash Fever™ display.

This manual contains the following sections:

Basics	This section gives an overview of the Cash Fever™ display system.
Installation	This Chapter describes how to install the Cash Fever™ software on a PC.
Configuration	This section describes the configuration of the Cash Fever™ display.

We at Atronic Systems constantly strive to ensure the high quality of our products. This includes our documentation. You can help us in our effort. If you find any mistakes or omissions in one of our manuals, please send an e-mail to: documentation@atronicsystems.com.

Document Status

Document Status: released		
	Date:	Name:
Author:	24-Mar-2005	Eveline Neugebauer
Released:	24-Mar-2005	Andreas Köck
Approved:	24-Mar-2005	Dietmar Penker

File Information

Document ID:	ENG09-438
Rev. No.:	1.4
Rev. Date:	Mar 18 2005 10:44:48

Revision History

Date	Revision	Changes
29-Nov-2004	1.0	Initial Release
25-Feb-2005	1.1	Cash Fever™ Shut-Down; Aspect Ratio or Clipping
17-Mar-2005	1.2	Installation Instructions, Hardware Requirements, Demo mode
18-Mar-2005	1.3	Changed Atronic Systems to Atronic in 2.1.1 and 2.3
24-Mar-2005	1.4	Hardware requirements: English OS

1.1 Scope

This manual describes the configuration of the Cash Fever™ display system as of version 1.x.

1.2 Target Audience

We address technical personnel. With this user group we assume that they are basically computer literate.

1.3 Conventions

This manual uses the following conventions:

Typographic Conventions	Bold	Indicates menu options, field names, etc.
	<i>Italics</i>	Introduces a new term.
	UPPERCASE	Indicates keys or key combinations.
	Vertical Bar	Separates menus and their associated options. Also used in product names.
	Monospace	Indicates code examples.

Statements

Caution: Informs you that if care and consideration are not taken then severe damage to yourself or to material may result.

Warning: Warnings indicate that if you do not take heed then physical injury or irrecoverable damage to material may result.

Note: Notes inform you of an exception or provide additional information. Notes may also be tips, important notes, and reminders.

1.4 Related Publications

We recommend that you have access to the following publications:

- Manual OP CO GEN Progressive Jackpots ROW 2.0 (Atronic International)

2 Basics

Cash Fever™ is a complete gaming solution which consists of a set of connected Cash Fever™ slot machines, a Cash Fever™ display system and a signage including a plasma display screen.

This manual deals with the setup and configuration of the Cash Fever™ display system. This includes the hardware and software required to show the Cash Fever™ video sequences, the odometers and animation on the display screen.

2.1 Package Contents

The Cash Fever™ display system consists of the following parts:

- A Cash Fever™ PC with the configuration software.
- A connection kit with cables for connecting the PC to the Commboard of the master slot machine.
- An adapter for double-sided display.

2.1.1 Cash Fever™ PC

The Cash Fever™ PC is a central component of Cash Fever™. You can choose to obtain it from Atronic or provide your own hardware.

The Cash Fever™ PC provided by Atronic is a Shuttle™ PC. It is delivered with pre-installed software.

The PC has a CD-ROM drive for the installation of software updates.

In the back, the PC has a serial port for connecting to the Commboard (via the Cash Fever™ converter) and three sockets for connecting to the display screen (two VGA sockets for the video channel and one for the audio channel).

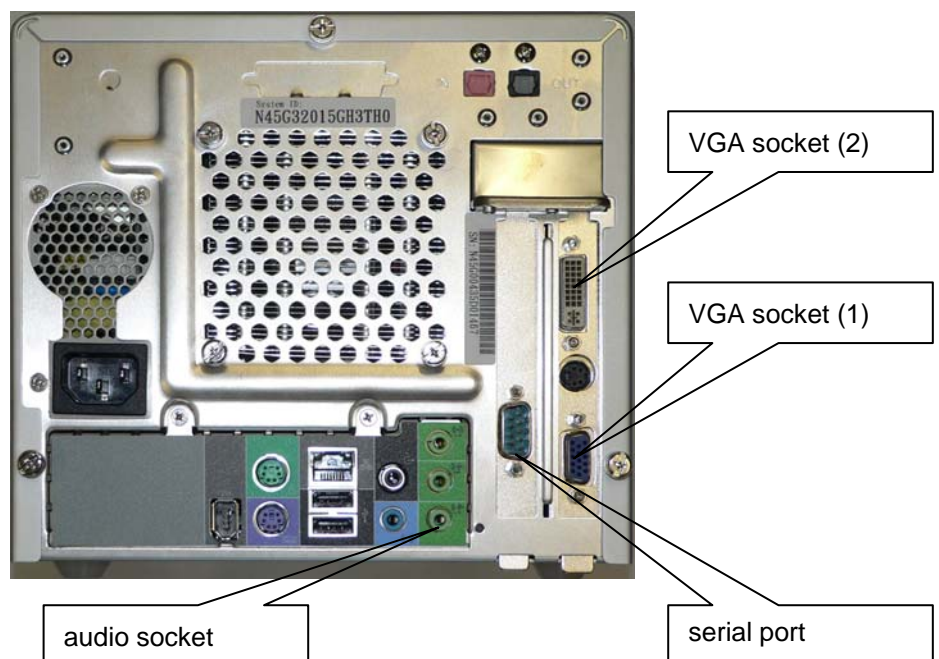


Figure 1: Cash Fever™ Shuttle PC - rear panel

The layout of the graphics card and the serial I/O card may vary.

For detailed instructions on how to connect the cables, see 2.2, "Setting Up and Connecting the Cash Fever™ PC" below.

Screen settings

The monitor of the Cash Fever™ PC must have the following screen settings:

- Screen resolution: 1024 x 768 pixels
- Color quality: Highest (32 bit)

The PC is delivered with these default settings.

Additional screen settings must be made if you want to control a double-sided display (two screens), see 2.2.2, "Settings for Double-Sided Display".

2.1.2 Connection Kit

The connection kit for the Cash Fever™ display system consists of the following parts:

- A Cash Fever™ converter (order number 67501463).
- A cable (part code RS232_CF01A, order number 67501461) for connecting the Cash Fever™ converter to the Commboard of the master slot machine. On one end, this cable has two 6-pole MT plugs and a 14-pole MT plug; on the other end, there is a 6-pole RJ11 telephone plug.
- A cable (part code RS232_CF02A, order number 67501462) for connecting the Cash Fever™ PC to the Cash Fever™ converter. This cable has serial plugs on both ends.
- An adapter which is required for connecting the two-sided display, i.e. the synchronous display on two screens.



Figure 2: Cash Fever™ connection kit - adapter, converter and cables

2.2 Setting Up and Connecting the Cash Fever™ PC

The Cash Fever™ PC is usually mounted in the cash box of the master slot machines.

Caution: If you build the Cash Fever™ PC into a case such as the cash box, make sure to actively ventilate the system (e.g. using a fan) to prevent the system from overheating. The Cash Fever™ PC automatically shuts down when the CPU temperature reaches 70° C.



Figure 3: Connecting the Cash Fever™ PC to the Commboard

2.2.1 Connections

Follow these steps to connect the Cash Fever™ PC to the Commboard of the master slot machine and the display screen:

1. Insert the 14-pole MT plug of the RS232_CF01A connection cable into the P3 connector on the Commboard, and one of the 6-pole MT plugs into the P3 connector on the OHDisplayboard on top of the Commboard (see picture above).

Note: The second 6-pole MT plug is for future use and for a diagnostic purpose.

2. Insert the RJ11 plug of the RS232_CF01A connection cable into the Cash Fever™ converter.
3. Insert one of serial plugs of the RS232_CF02A connection cable into the Cash Fever™ converter.
4. Insert the other serial plug of the RS232_CF02A connection cable into the serial port of the Cash Fever™ PC (see the picture in 2.1.1, Cash Fever™ PC).

5. Connect the Cash Fever™ PC to the display screen by inserting the VGA plug into the VGA socket (1) of the Cash Fever™ PC, and the audio plug into the audio socket.

These cables are not part of the Cash Fever™ connection kit; they are delivered with the signage and the display screens.

See 2.1.1, "Cash Fever™ PC" for a picture of the PC's rear panel.

6. To control the double-sided display, plug the adapter (part of this connection kit) into the VGA socket (2) of the Cash Fever™ PC, and then plug in the connection cable to the second display screen.

Make sure that you make the required screen settings for the double-sided display (see below).

2.2.2 Settings for Double-Sided Display

For controlling the double-sided synchronous display, the following settings must be made. Make sure the adapter is plugged into the VGA socket (2) and both displays are connected to the PC (see above).

Go to **Start|Settings|Control Panel** and select **Display**. Go to the **Settings** tab and set the display for the two monitors as shown in the picture below. The second monitor must be deactivated.

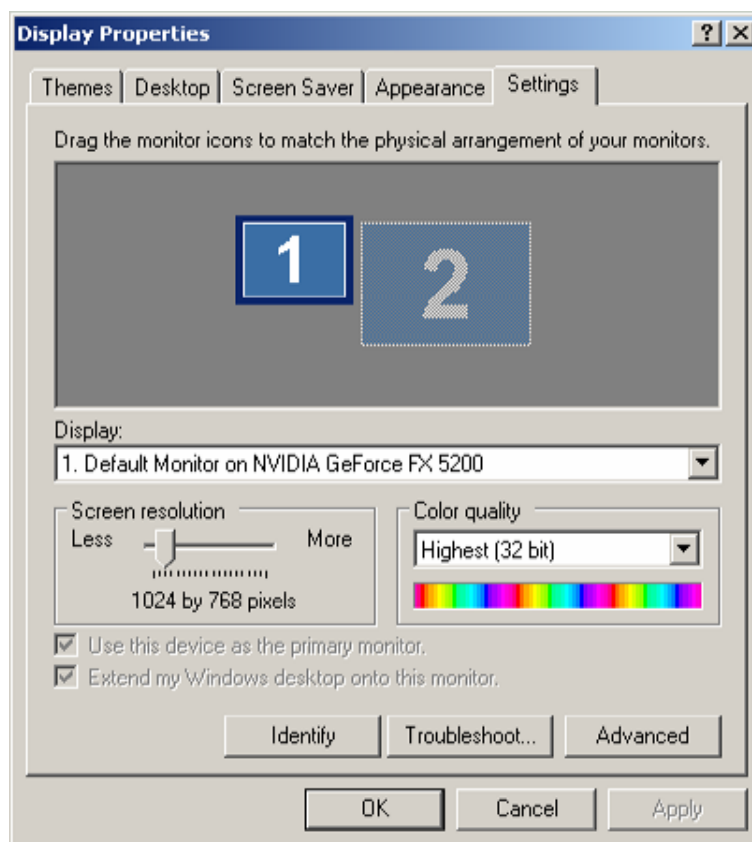


Figure 4: Screen settings for the double-sided display – monitors

Click **Advanced** to open the **Advanced Settings** dialog. Go to the **GeForce FX 5200** tab.

Select **Clone** as the **nView Display Mode**, and **Analog Display** for both the primary and secondary display, as shown in the picture below.

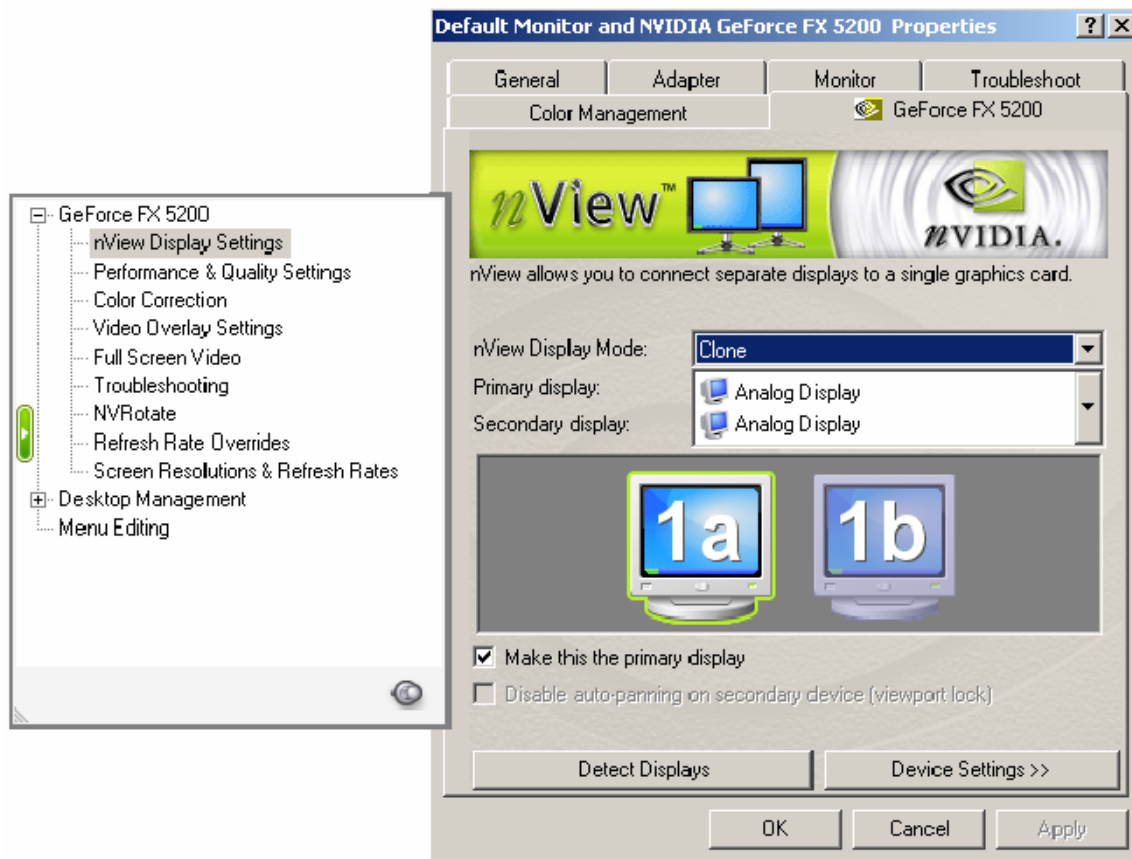


Figure 5: Screen settings for the double-sided display - Clone mode

These settings ensure that both screens show the same contents.

2.3 Software Updates

If you receive a software update for the Cash Fever™ display configuration from Atronic, insert the update CD-ROM into the CD-ROM drive of the Cash Fever™ PC, and copy all files to the Cash Fever™ program folder on the local hard drive (default: \CashFever).

For further instructions, consult the `readme.txt` file provided on the CD-ROM.

3 Installation

If you choose to use your own PC hardware you will have to install the Cash Fever™ software as described in the following chapters.

3.1 Hardware Requirements

For the Cash Fever™ software to function properly the PC must fulfill the following requirements:

- CPU: 1 Processor: Athlon/Sempron 3000+ or P4 3 GHz or higher
- RAM: 1 GB or more
- HDD: parallel ATA 40 GB or more, 7200 U/min
- HDD Controller: parallel ATA controller
- Graphics: GeForce FX 5200 dual port output
- 1 x Fast-Ethernet adapter
- 1 x DVD-ROM drive
- 1 x USB keyboard
- 1 x USB mouse
- 1 x RS232 interface (EGM)
- 1 x free USB interface (UPS)
- OS: Windows® XP Professional (make sure to install the **Englisch** version!)
- Uninterruptible Power Supply (UPS)

3.2 Software Installation

Basically the Setup Wizard will guide you through the installation process. Please follow the instructions on screen and accept the default settings.

Only where your interaction is required, will this be described in the following chapters.

To start the Setup Wizard start the program `Setup.exe` on your installation CD.

You are prompted to choose from following components:

- ☒ Java Runtime Environment 1.4.2.04
- ☒ QuickTime 6.5
- ☒ DivX 5.2.1
- ☒ Acrobat Reader 7
- ☒ Cash Fever

Adobe Acrobat reader is the only optional component. It is required to read the documentation provided on the installation CD.

After installing all components restart the PC.

3.2.1 Installation of DivX™

***Get a free 6-month
DivX Pro trial!***

The Install Shield will guide you through installation of DivX™.

When prompted for the installation of the "6-month DivX Pro trial" select:

- **No thanks, just give me DivX**

Select Components

Select and deselect components as follows:

- ☒ Generic MPEG-4 Playback Component
- ☐ DivX Player 2.6

3.2.2 Installation of QuickTime™

Finished

The Install Shield will guide you through installation of the QuickTime™ player. Accept all default settings. You don't need a serial number.

On the last screen of the QuickTime™ installation chose not to launch the readme file and the player:

- ☐ Yes, I want to view the QuickTime README file.
- ☐ Yes, I want to launch QuickTime Player.

3.2.3 Java RE Installation

If JavaRE 1.4.* is not yet installed, the Install Shield will guide you through the installation of JavaRE. Install Java RE with default settings.

If there is an older version of the JavaRE package on the system, JavaRE will be updated automatically.

Caution: When prompted, **don't restart** the computer in this step, otherwise the last installation step will be skipped!

3.2.4 Acrobat Reader Installation

The Install Shield will guide you through installation of the QuickTime™ player. Accept all default settings.

4 Configuration

4.1 Cash Fever™ Startup

The Cash Fever™ application is started automatically when the Shuttle™ PC is started.

If the application is not running, you can start it by restarting the PC. Alternatively, take the following steps:

1. Double-click the CF Serial Communication icon on the desktop.
2. Then double-click the Cash Fever™ icon.

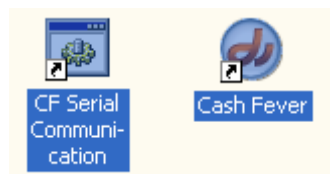


Figure 6: Cash Fever™ desktop icons

4.2 Cash Fever™ Shut-Down

Please make sure to always shut down the Cash Fever™ PC correctly via the Start\Shut Down...

Never turn off Cash Fever™ by simply turning off the mains supply.

Note: If this can not be ensured, we suggest using an uninterruptible power supply (UPS).

4.3 Configuration Window

To open the Cash Fever™ Configuration window, press the **Home** key (for German keyboards, this is the **Pos1** key).

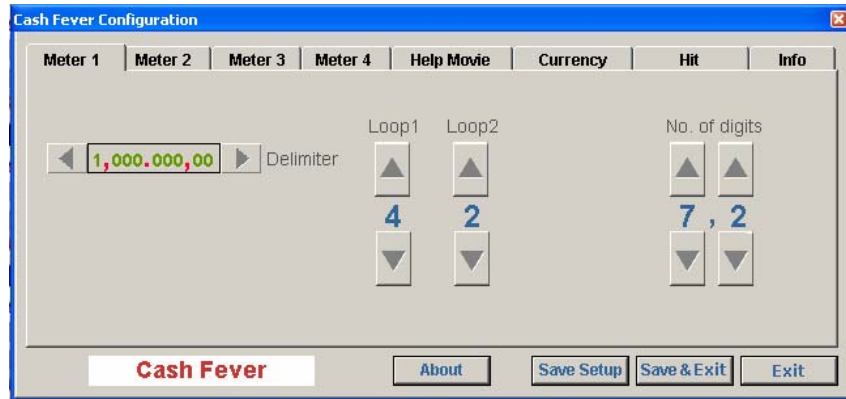


Figure 7: Cash Fever™ Configuration window

Configuration window tabs

The Cash Fever™ Configuration window contains several tabs with configuration options:

- **Meter 1 to Meter 4**

These tabs contain settings for the display of the 4 odometers.

- **Help Movie**

This tab contains settings for the video sequence which explains how to play Cash Fever™.

- **Currency**

This tab contains settings for the display of currency symbols and letters.

- **Hit**

This tab contains settings for the display of jackpot hits.

- **Info**

This tab contains information on the Cash Fever™ software version.

Configuration window buttons

The Cash Fever™ Configuration window provides the following buttons:

- **About**

Click this button to display information on the Cash Fever™ software version.

- **Save Setup**

Click this button to store the current configuration settings; they are saved in the configuration file.

The Cash Fever™ configuration file `cfever.cfg` is located in the Cash Fever™ program folder on the local hard drive (default: \CashFever).

- **Save & Exit**

Click this button to store the current configuration settings in the configuration file, and to close the configuration window.

- **Exit**

Click this button to close the configuration window. The current configuration settings remain valid for the current session; they are not saved in the configuration file.

Note: Do not use the Close button [x] in the top right corner to exit the configuration program. Although this closes the window, the program remains in the computer's memory and may slow it down.

4.3.1 Meter 1 to Meter 4

The **Meter 1** to **Meter 4** tabs contain settings for the display of the 4 odometers: the delimiter, the loops and the number of digits.

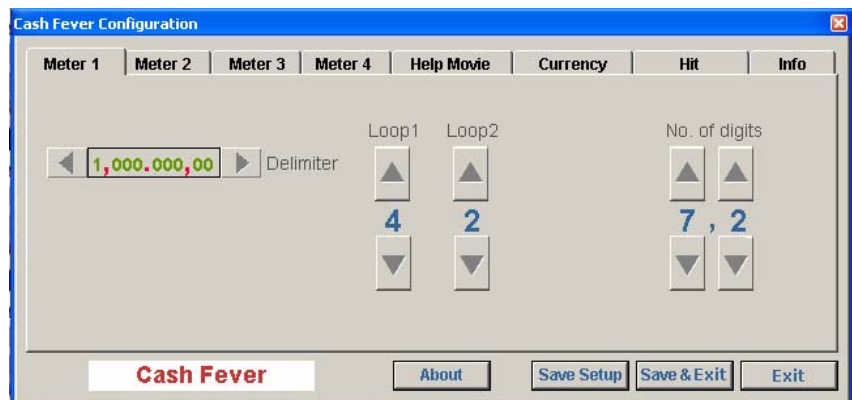


Figure 8: Cash Fever™ Configuration window - Meter tab

Delimiter

The delimiter setting defines the separators between the digits of the amounts displayed. Dots or commas are available.

To change the setting, click the arrow to the left or right. The following delimiter settings are available:

- 1,000.000,00 (default)
- 1,000,000.00
- 1.000.000,00

The delimiter setting applies to all four odometers.

Loop

The loop settings define how long the odometer will be displayed when it is first introduced by Doctor Cash Fever™ (Loop1) and after Doctor Cash Fever™ closes the odometer sequence (Loop2). For example, the value 4 for Loop1 means that the thermometer will do four cycles of color changes; value 2 means two cycles.

Value range: 1 - 10.

Default: 6 (for Loop1), 2 (for Loop 2).

The loop settings apply to all four odometers.

No. of digits

The number of displayed digits defines the size of each odometer. Example: 7,2 means 7 digits in front of the delimiter (comma or dot, depending on the setting) and 2 digits after the delimiter.

Value ranges: 3 - 8 before the delimiter, 0 - 2 after the delimiter.

Default: 7,2 (for Meter 1); 6,2 (for Meters 2 to 4).

4.3.2 Help Movie

The **Help Movie** tab contains settings for the video sequence which explains how to play Cash Fever™. You can set the language of the help texts, decide how often the help sequence is shown, and you can disable it.

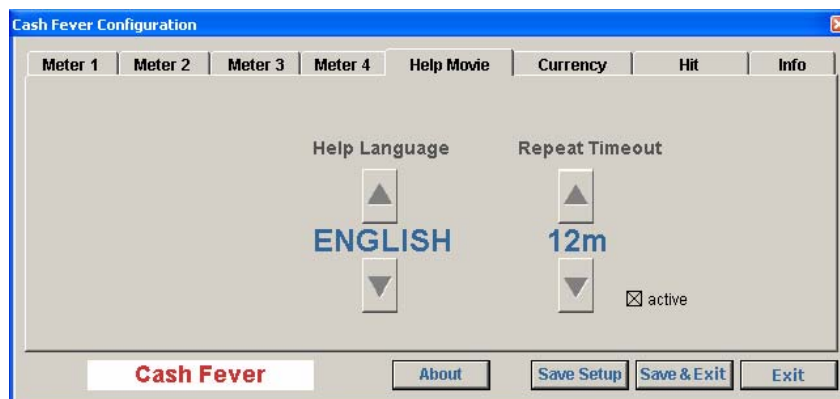


Figure 9: Cash Fever™ Configuration window - Help Movie tab

Help Language

The help texts can be displayed in one of the following languages:

- English (default)
- French
- German
- Portuguese
- Russian

Repeat Timeout

The repeat timeout (in minutes) determines after which time period the help movie will be played again. However, the help movie does not interrupt the Cash Fever™ video sequence when the repeat timeout period is over. It is started at the earliest possible time after the current regular Cash Fever™ sequence.

Value range: 5 - 60 minutes, default: 12 (the help movie is played approx. every twelve minutes).

Active

If the check mark is crossed [x], the help movie is played repeatedly after the specified repeat timeout. When Cash Fever™ is being introduced on a specific site, the help movie should be enabled.

If the check mark is not crossed [], the help movie will not be played at all. You can disable it when Cash Fever™ is already well known on a specific site.

Default: Active

4.3.3 Currency

The **Currency** setting defines the currency symbol or currency which is shown on the four odometers and with the amount displayed when a jackpot hit occurs.

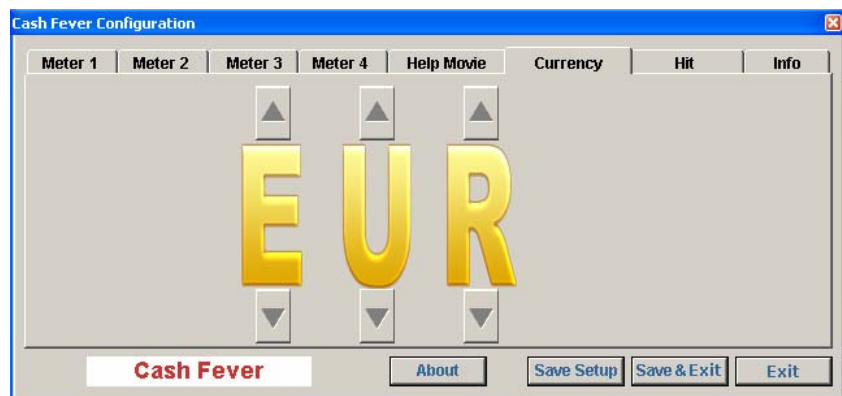


Figure 10: Cash Fever™ Configuration window - Currency tab

€, £, \$, EUR, ...

You can use graphic one-digit symbols such as €, £ or \$, or the three-letter codes such as EUR, USD, SIT, etc. in accordance with the country currency.

To change the setting, click the arrow(s) up or down until you find the currency symbol or letter you are looking for. The effect is shown immediately on the screen.

To refresh the display so that the letters are properly aligned when the odometer is shown, click the right mouse button outside the configuration window.

The currency setting applies to all four odometers.

Default: EUR

4.3.4 Hit

The **Hit** tab contains settings for the display of a jackpot hit which occurs for one of the four jackpot levels.

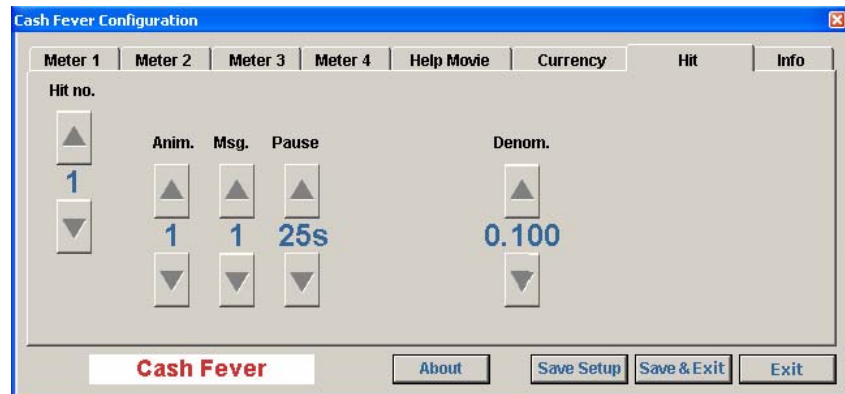


Figure 11: Cash Fever™ Configuration window - Hit tab

Each jackpot level is assigned to one of the four odometers, from top to bottom:

Meter 1 (top)	Top level jackpot (the highest jackpot level)
Meter 2	...
Meter 3	...
Meter 4 (bottom)	Bottom level jackpot (the lowest jackpot level)

Note: The assignment of meters to jackpot levels depends on the APL (Atronic Progressive Link) setting and on the setting for the [JP] value in the `bmif.ini` file. This configuration file is located in the Cash Fever™ program folder on the local hard drive (default: `\CashFever`).

You can configure the hit screen for each jackpot level individually: the animation and message shown, and the display duration. In addition, you can set the smallest coin which can be played.

Hit no.

This is the hit number which for which you want to configure the display.

Click the arrow up or down to select one of the hit numbers 1 - 4; the number corresponds to the meters 1 - 4 (this is not the jackpot level, see above).

Anim.

A specific type of animation can be assigned to each hit number.

Click the arrow up or down to select the type of animation for the current hit number. There are 4 predefined animations.

Default: the animation number is the same as the hit number.

Message

A specific jackpot message can be displayed for each hit number.

Click the arrow up or down to select the text message for the current hit number.

Default: the message number is the same as the hit number.

Pause

The value for pause (in seconds) determines for how long a jackpot hit will be displayed.

Click the arrow up or down to change the value for the current hit number. Usually, the pause value will be higher for a higher jackpot level (top level) than for a lower jackpot level (bottom level).

Value range: 10 - 60 seconds; default: 25 seconds

Denom.

The denomination value corresponds to the lowest coin unit or currency unit which can be played on the corresponding slot machines. In addition, the denomination determines the rounding factor for the jackpot value displayed.

Example: If the EUR currency is selected, the denomination setting 0.100 corresponds to the 10 Cent (EUR) coin. The jackpot value displayed will be rounded to the first decimal place, e.g. € 428,50 even if the real value is € 428,47. If the denomination setting is 10, the smallest currency unit is 10 €, and the same value will be displayed as € 430,00.

Click the arrow up or down to set the denomination.

Value range: 0.010 - 5000; default: 0.100

4.3.5 Info

The **Info** tab shows the current version of the software and copyright information.

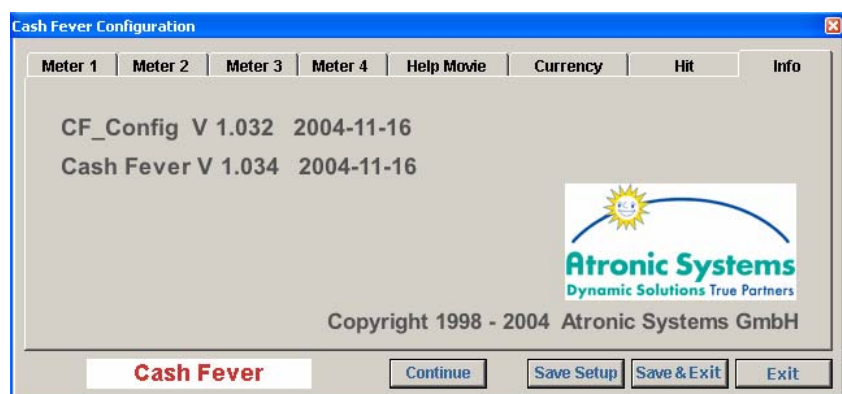


Figure 12: Cash Fever™ configuration window - Info tab

When this tab is active in the configuration window, there is a **Continue** button in addition to **Save Setup**, **Save & Exit** and **Exit**.

Continue

Click **Continue** to return to the configuration tab you were on before you changed to the **Info** tab.

4.4 Aspect Ratio or Clipping

Current plasma screens automatically detect the correct size and ratio of the displayed signals. The Cash Fever™ application assumes this behavior by default.

If your display seems clipped or unproportional ("long faces effect") try changing one entry in the file `lingo.ini`.

Change the line

-- **zoom_id=1**

to

zoom_id=1.

4.5 Demo Mode

For demonstration purposes you can operate the Cash Fever™ PC without a connected bank of slot machines.

In this mode you will only see the animations cycle but not the odometer screen.

To activate the demo mode change one entry in the file `lingo.ini`.

Change the line

Demo_Mode = 0

to

Demo_Mode = 1.

Index

A

About button 14
Acrobat Reader installation 12
activate help movie 17
adapter 4, 6, 7
animation 18
aspect ratio 20
audio connection 5

C

cables 4, 6, 7
Cash Fever™ 4
Cash Fever™ PC 5
clipping 20
clone display 8
Close button 15
Commboard 5, 6
configuration 13
configuration of currency 17
configuration of help movie 16
configuration of jackpot hits 18
configuration of meters 15
configuration settings 14
configuration window 14
connecting the PC 7
connection kit 4, 6
Continue button 19
converter 4, 6
currency configuration 17

D

deactivate help movie 17
delimiter 15
denomination 19
digits displayed 16
disable help movie 17
display mode for two screens 8
display system 4
DivX™ installation 11
double-sided display 4, 8

E

enable help movie 17
Exit button 15

H

help language 16
help movie 16
help movie configuration 16
hit configuration 18
hit number 18

I

info 19

J

jackpot display duration 19
jackpot hit configuration 18
jackpot levels and meters 18
jackpot message 19
JavaRE installation 12

L

language 16
loop 16

M

message 19
meter configuration 15
meters and jackpot levels 18
monitor settings 5

N

number of digits 16

O

odometer configuration 15
overheating 7

P

package contents 4
pause 19
PC connection 7
PC for Cash Fever™ 5
PC startup 13
plugs and sockets 7

Q

QuickTime™ player installation 11

R

ratio 20
repeat timeout 16
resolution 5

S

Save & Exit button 15
Save Setup button 15
screen settings 5
serial port 5
settings for screen 5
setup 7

Shuttle PC 5
sockets and plugs 7
software updates 9
startup 13

T

two screens 8

U

updates 9

V

ventilation 7
VGA socket 5
video connection 5