



CashCode®

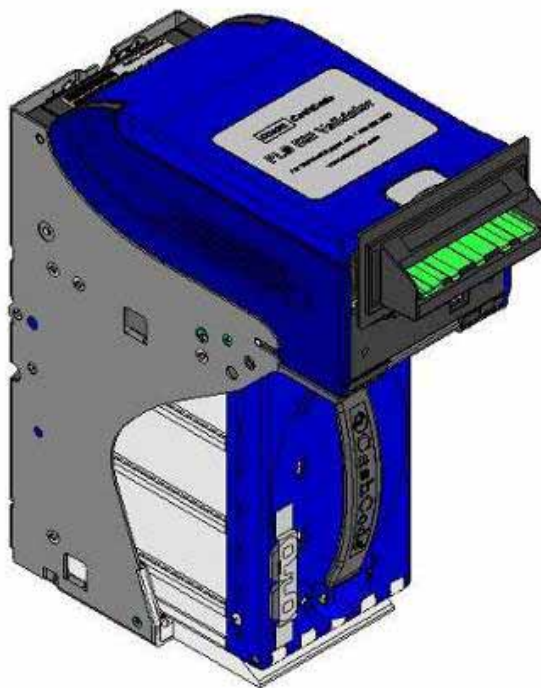
A division of **CRANE** PAYMENT SOLUTIONS



FrontLoad Bill Validator
Part-2 Service Manual



FrontLoad Standard Bill & Ticket Validator



Part 2 Service Manual



CashCode®

A division of **CRANE** PAYMENT SOLUTIONS



FrontLoad Bill Validator
Part-2 Service Manual

Revision History

Revision Version	Description	Date	By
1	Initial Release	Feb 28, 2009	Chris Z



Who Should Read This Guide

This guide is intended for use by persons who are interested in servicing the CashCode  product.

Related Product Documentations

Document Type	Document Part Numbers	Descriptions
User's Guide	UG- FLS-xxxx_Rev xx/xx	Mechanical Hardware User's Guide Hardware Configurations
Software Descriptions	UG- FLSxxxx-xxxxxx_Rev xx/xx	Software Users Guide Dip Switch Settings Bill Table Reference Diagnostics CRC
Bill Set Descriptions	BSD-xxxx-x	Picture of Accepted Bills and Denominations for specific software
Cassette Users Guide	FLSX-xxxx	Description and detail of Cash Box and its options
Bezel Users Guide	UG-FLSB-xxxx_x	Details of Bezel, opening and mounting arrangement
Operational Manual	one_Part1_x	Basic Operation Manual
Service Manual	one_Part2_x	Extended Manual with details of how to perform service
3D Outline Model	Step or IGS format available upon request	Contact your sales representative



You can also visit our website for available documents.

<http://support.cashcode.com/en/documentation/index.php>

Disclaimer: For your own safety, please follow the instruction provided in this manual. Your decision not to comply will be at your own risk & discretions. CashCode shall not be liable for any damages, loss or injury which may occur.



CashCode®

A division of **CRANE** PAYMENT SOLUTIONS



FrontLoad Bill Validator
Part-2 Service Manual

Table of Contents

1. REQUIRED TOOLS.....	6
2. PRIMARY UNIT DISASSEMBLY.....	7
3. VALIDATING HEAD.....	8
3.1. FLS Validating Head Exploded View and Part List.....	9
3.1.1. Subassembly Exploded view.....	10
3.1.2. Body Assembly Exploded view.....	11
3.1.3. Validate Head Part List.....	12
3.2. Covers Disassembly.....	14
3.2.1. Side, Top and Rear Cover Disassembly.....	14
3.2.2. Bottom Cover Disassembly.....	15
3.3. Circuit Board Removal.....	16
3.3.1. Magnetic Sensors Board Removal.....	16
3.3.2. Main CPU Board Removal.....	16
3.3.3. Aligning Board Removal.....	16
3.3.4. Optical Sensor Board Removal.....	16
3.3.5. Sensor Board Removal.....	17
3.4. Drive Assemblies Removal.....	18
3.4.1. Drive Assembly (0300196) Removal.....	18
3.4.2. Drive Assembly (0300199) Removal.....	19
3.4.3. Drive Assembly (0300198) Removal.....	19
3.4.4. Drive Assembly (0300052-24) Removal.....	20
3.5. Upper Guide Disassembly.....	21
3.5.1. Upper Guide Removal.....	21



3.5.2. Rollers Removal.....	22
3.5.3. Latch Removal.....	22
3.5.4. Light Guides, Lenses and Eyelet Removal.....	23
3.6. Body Disassembly.....	24
3.6.1. O-Rings Shaft Disassembly.....	24
3.6.2. Lip and Front Shaft Removal.....	27
3.6.3. Cable (0500175 and 0500152) Removal.....	29
3.6.4. Rear Guide Disassembly.....	30
3.6.5. Light Guides, Lens and Eyelet Removal.....	32
4. BEZEL	34
4.1 Bezel with runway lights (FLS-5101).....	34
4.2 Bezels with indicator light Green / Red (FLSB-5301, 5303, 5305, 5307).....	35
4.3 Bezels with indicator light Blue / Red (FLSB-5301R, 5303R, 5305R, 5307R).....	36
4.4 Bezels with indicator light Blue / Red (FLSB-B).....	37
4.5 Bezel with indicator light oval shaped (FLSB-5901)	38
4.6 Bezel with runway light, open from top (FLSB-5701)	39
5. HOUSING.....	40
5.1. Part List.....	41
5.2. Housing Disassembly and Exploded View Part List.....	42
6. CASSETTE.....	44
6.1. Cassette Part List.....	45
6.2. Cassette Type.....	46
6.3. Cassette Disassembly.....	47
6.3.1. Door Removal.....	47
6.3.2. Stacker Base Assembly Disassembly (Service Center Strictly).....	48
6.3.3. Pressure Plate Removal.....	52
6.3.4. Cassette Handle Removal.....	53
7. CONTACTS.....	54



1. Required Tools

The following tools will be required to perform disassembly and reassembly:

1. Retaining Ring Holder with Retaining Rings (size 3.2)
2. Retaining Ring Holder with Retaining Rings (size 2.3)
3. Nylon Push Rivets
4. Philips screwdriver
5. Retaining Ring Snapper (size 3.2)
6. Retaining Ring Snapper (size 2.3)
7. Pliers
8. Tweezers
9. Flathead screwdriver





2. Primary Unit Disassembly

Perform the following steps (see figure 1):

1. Press the FLS Validating Head release button and pull the Validating Head forward.
2. Pull on the Cassette handle and remove the Cassette from the Housing.
3. To remove the Bezel, open the Validating Head Door, unscrew the grounding cable from the Validating Head (if applicable), then slide the Bezel up and disconnect the 14 pin cable from the Validating Head.

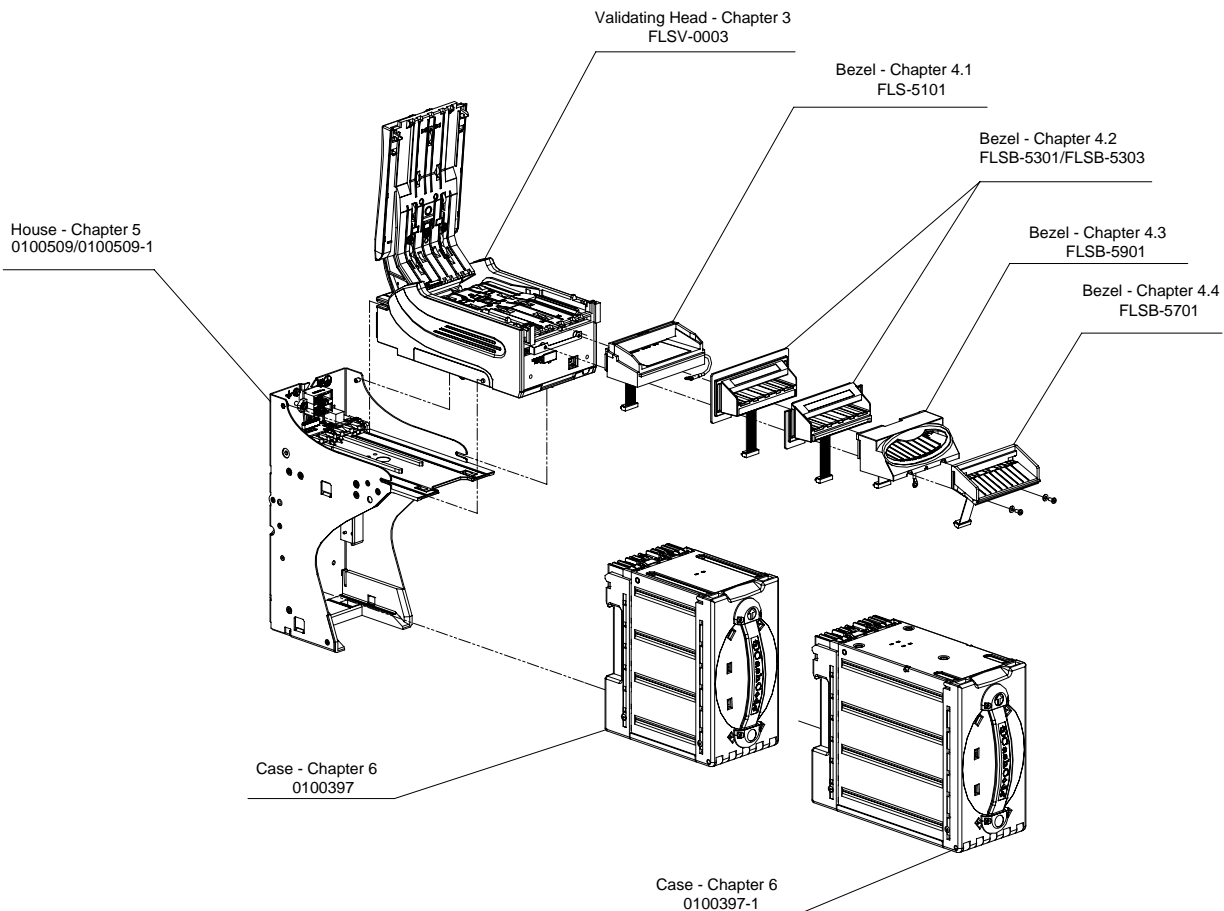


Figure 1 – Primary Unit Disassembly



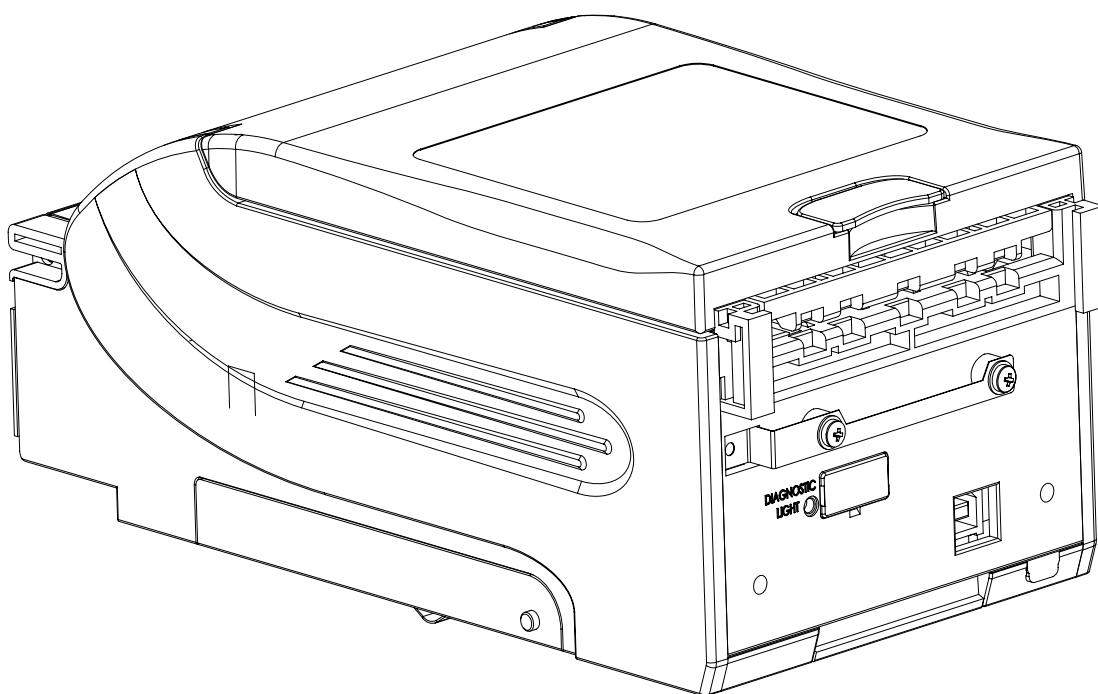
CashCode®

A division of **CRANE** PAYMENT SOLUTIONS



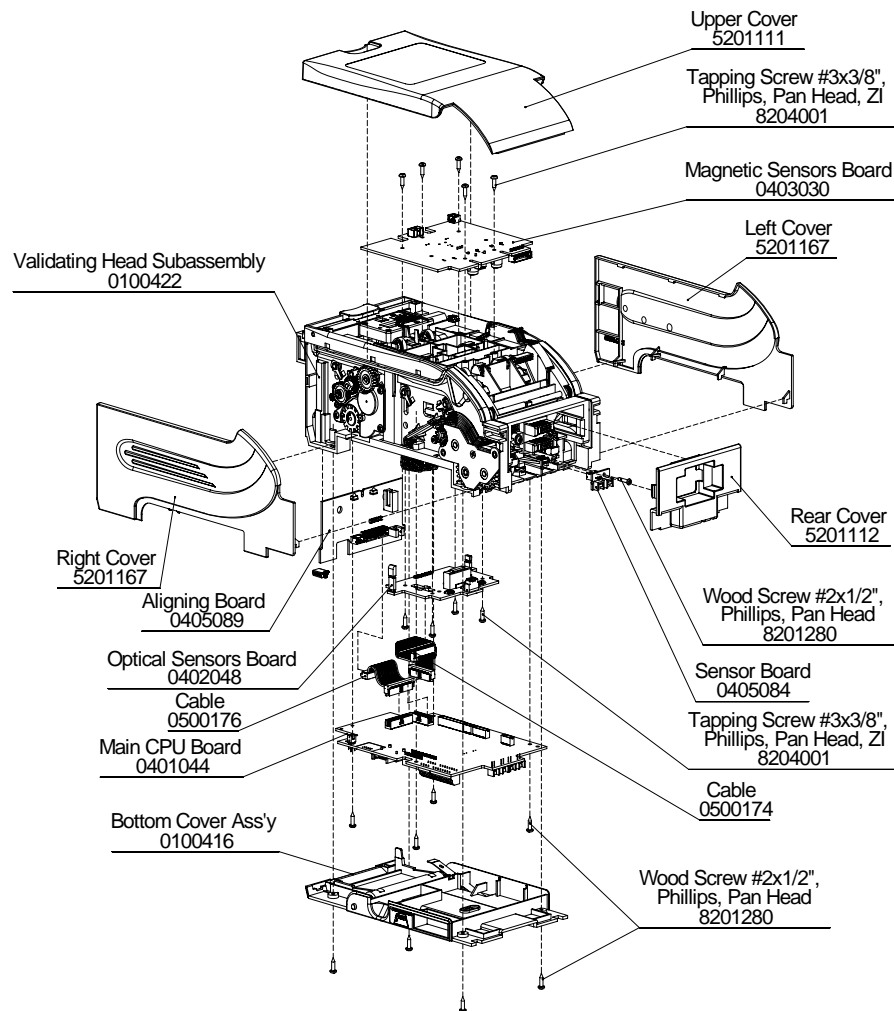
FrontLoad Bill Validator
Part-2 Service Manual

3. Validating Head Disassembly FLSV-XXXX





3.1. FLS Validating Head Exploded View and Part List



➤ For detail disassembling process please refer to section 3.2



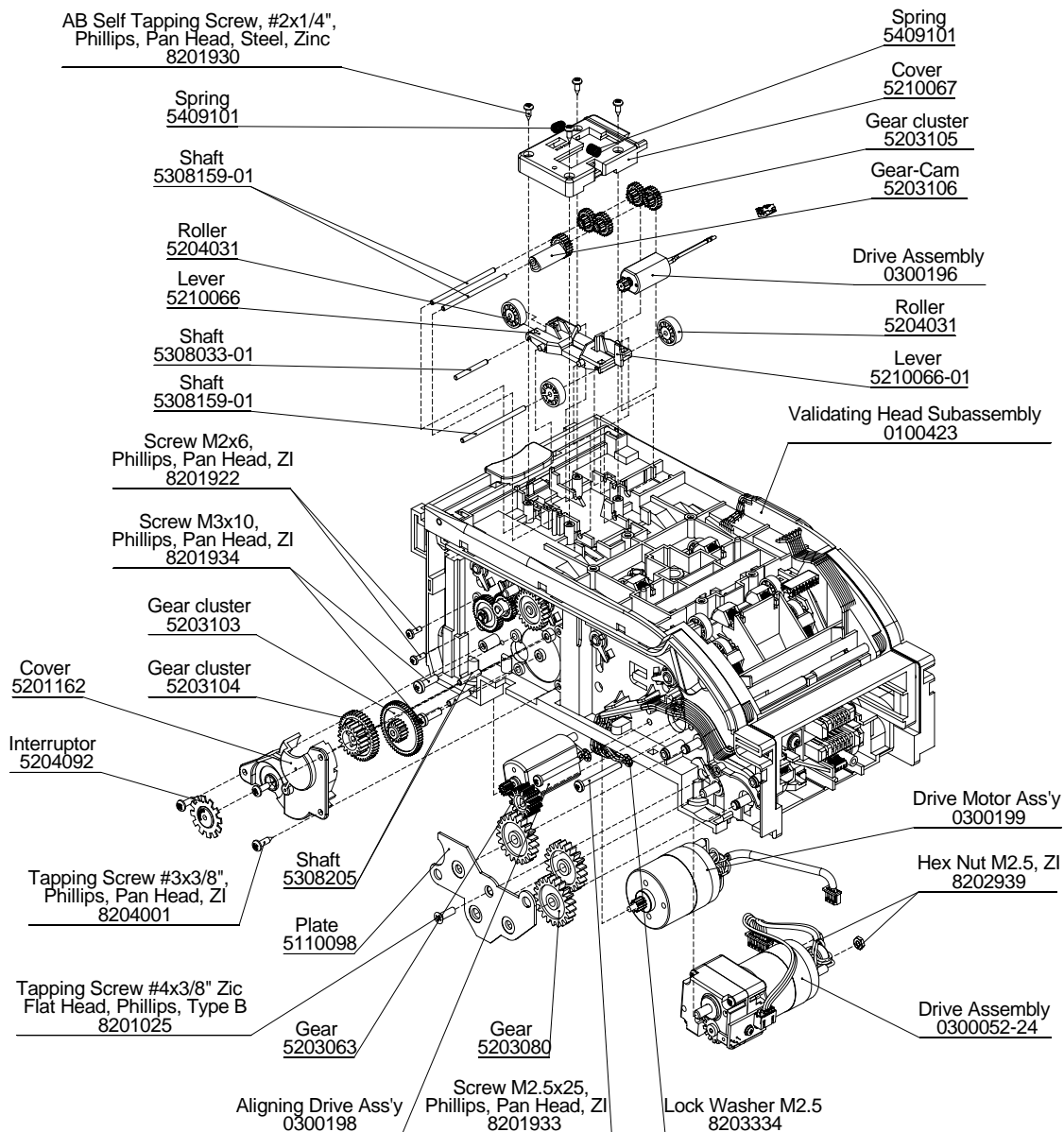
CashCode®

A division of **CRANE** PAYMENT SOLUTIONS



FrontLoad Bill Validator
Part-2 Service Manual

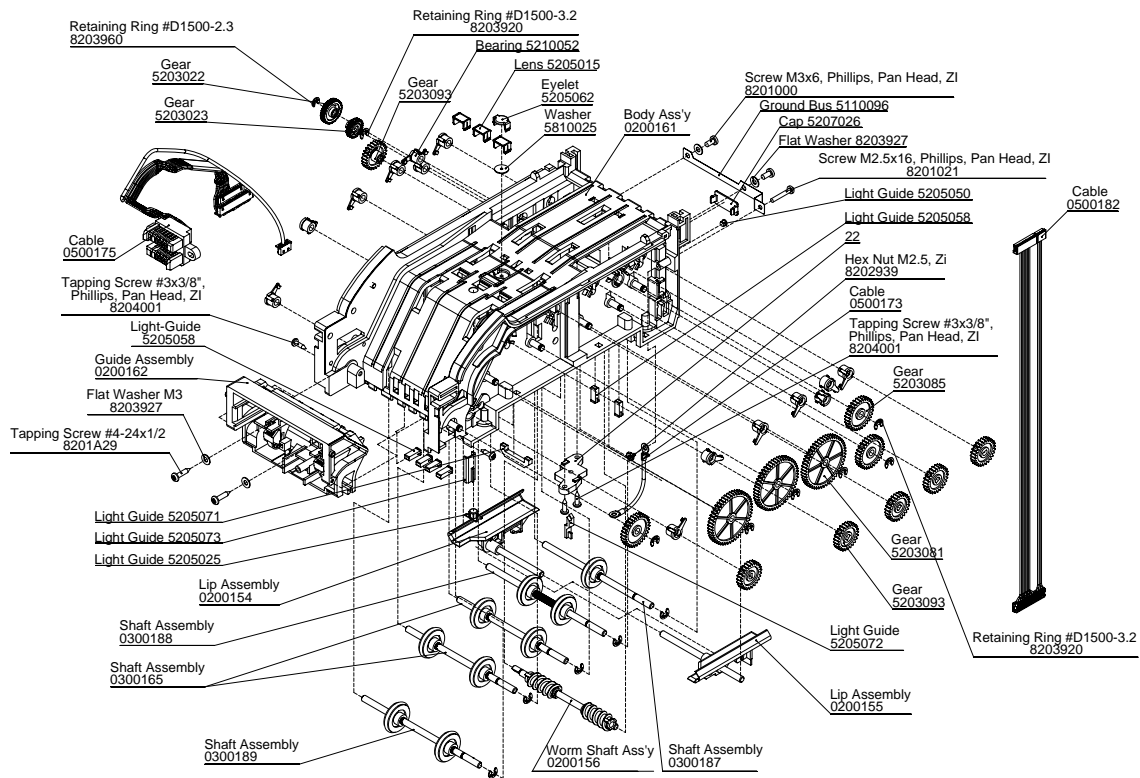
3.1.1 Subassembly Exploded view



➤ For detail disassembling process please refer to section 3.2



3.1.2 Body Assembly Exploded View



➤ For detail disassembling process please refer to section 3.2



CashCode®

A division of **CRANE** PAYMENT SOLUTIONS



FrontLoad Bill Validator
Part-2 Service Manual

3.1.3 Validate Head Part List

Part ID	Description	Qty.
0100422	Validating Head Subassembly	1
0100416	Bottom Cover Assembly	1
0500176	Cable	1
0500174	Cable	1
0401044	Main CPU Board	1
0403030	Magnetic Sensors Board	1
0402048	Optical Sensors Board	1
0405084	Sensor Board	1
0405089	Aligning Board	1
5201111	Upper cover	1
5201112	Rear cover	1
5201167	Right cover	1
5201167-01	Left cover	1
8201280	Wood Screw #2x1/2", Phillips, Pan Head	5
8204001	Tapping Screw #3x3/8", Phillips, PAN Head, Zinc	20
0300196	Drive Assembly	1
0300198	Aligning Drive Assembly	1
0300199	Drive Motor Assembly	1
0300052-24	Drive Assembly	1
5203080	Gear	3
5203103	Gear cluster	1
5203104	Gear cluster	1
5204092	Interruptor	1
5201162	Cover	1
5308205	Shaft	2
5110098	Plate	1
5308159-01	Shaft	3
5409101	Spring	2
5210066	Lever	1
5210066-01	Lever	1
5203105	Gear cluster	4
5203106	Gear-Cam	1
5210067	Cover	1
5203063	GEAR	1
5308033-01	Shaft	1
5204031	Roller	3
8202939	Hex Nut M2.5, ZI	2
8203334	Lock Washer M2.5	2
8201922	Screw M2x6, Phillips, Pan Head, ZI	2
8201933	Screw M2.5x25, Phillips, Pan Head, ZI	2



8201934	Screw M3x10, Phillips, Pan Head, ZI	2
8201930	AB Self Tapping Screw, #2x1/4", Phillips, Pan Head, Steel, Zinc	4
8201025	Tapping Screw #4x3/8 ZIC Flat Head Phillips Type B, Irwin# BPF-0408	1
0500175	Cable	1
0200161	Body Assembly	1
0200154	Lip Assembly	1
0200155	Lip Assembly	1
0200156	Worm Shaft Assembly	1
0300187	Shaft assembly	1
0300188	Shaft assembly	1
0300165	Shaft assembly	2
0300189	Shaft assembly	1
0200162	Guide assembly	1
0500182	Cable	1
0500173	Cable	1
5205050	LIGHT GUIDE	1
5203022	Gear	1
5203023	Gear	1
5110096	Ground bus	1
5203085	Gear	3
5203081	Gear	3
5210050	Holder	1
5210052	Bearing	14
5205072	Light guide	1
5205073	Light guide	1
5207026	Cap	1
5203093	Gear	6
5205071	Light guide	1
5810025	Washer	1
5205062	Eyelet	1
5205015	Lens	3
5205025	Light Guide	1
5205058	Light-Guide	6
8203927	Flat washer M3	4
8201021	Screw M2.5x16, Phillips, Pan Head, ZI	1
8201000	Screw M3x6, Phillips, Pan Head, ZI	2
8203960	Retaining Ring # D1500-2.3	1
8203920	Retaining Ring # D1500-3.2	12
8201A29	Tapping Screw #4-24x1/2	2



CashCode®

A division of **CRANE** PAYMENT SOLUTIONS



FrontLoad Bill Validator
Part-2 Service Manual

3.2. Covers Disassembly

3.2.1 Side, Top and Rear Cover Disassembly

Perform the following steps (see figure 2):

1. Insert flat screwdriver under the edge of the top cover and release the six tabs, three tabs are located on each side of the top cover (points 1) and remove the cover.
2. Insert flat screwdriver in the back opening (points 4) under the right cover and release three tabs located on upper side of the cover (points 5), slide the cover up and remove it from the unit.
3. Repeat step 2 to remove the left cover.
4. Insert flat screwdriver under the rear cover (points 3) and remove the cover.



When removing a covers, be sure to handle the covers' hooks very carefully, if the covers are damaged in the removal process replace them with new.

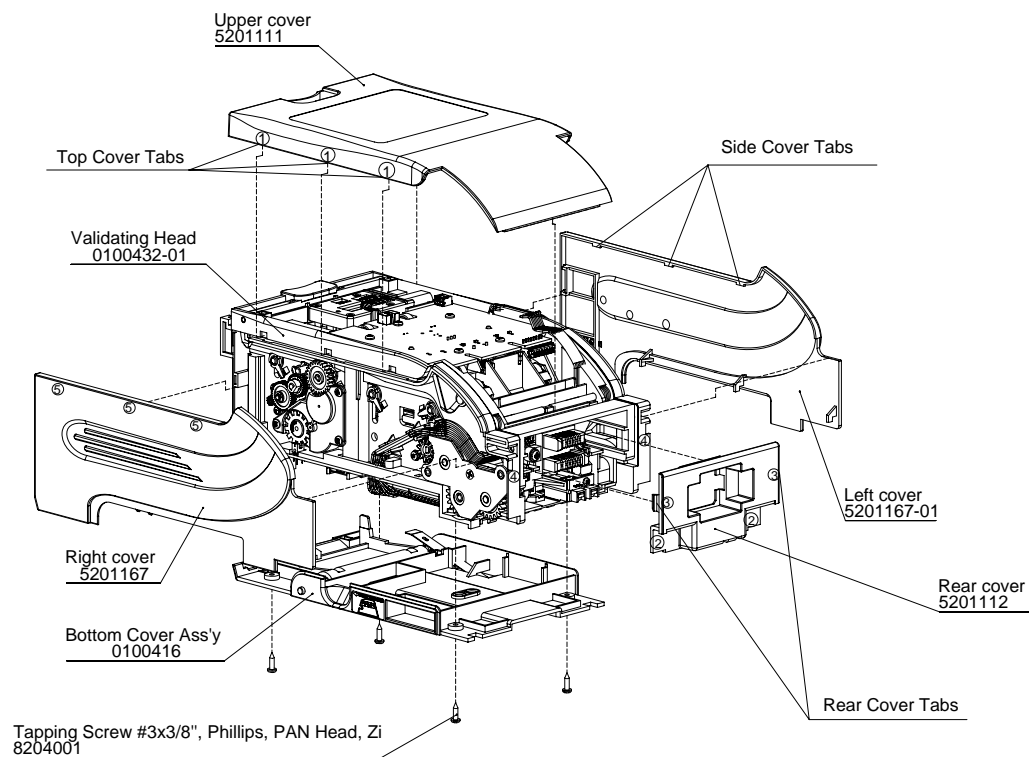


Figure 2 – Covers Removal



3.2.2 Bottom Cover Disassembly

Perform the following steps (see figure 3):

1. To remove the bottom cover turn the unit over, then unscrew four screws from the bottom cover.
2. Remove the Retaining Rings from each end of the Shafts and pull the Shafts out.



Caution: Hold the Latch in place while sliding the shafts because it is underneath a spring mechanism.

3. Remove the Latch

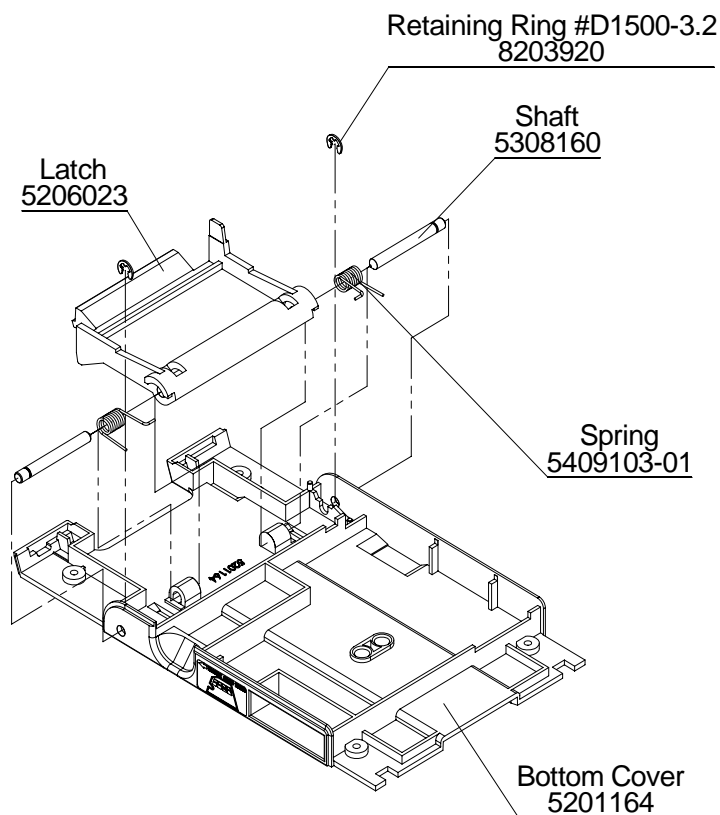


Figure 3 - Bottom Cover Disassembly



3.3 Circuit Board Removal

3.3.1 Magnetic Sensors Board Removal

Perform the following steps (see figure 4):

1. Disconnect the two cables connected to the Magnetic Sensors Board.
2. Unscrew five screws holding the Board in place.
3. Remove the Magnetic Sensors Board.

3.3.2 Main CPU Board Removal

Perform the following step (see figure 4):

1. Turn the unit over.
2. Disconnect the three cables connected on top of the CPU Board.
3. Unscrew four screws holding the CPU Board in place.
4. Lift the CPU Board and disconnect all cables under the Board.
5. Remove the Board.

3.3.3 Aligning Board Removal

Perform the following step (see figure 4):

1. Disconnect the motor's cable connected to the Board.
2. Presses the Board release baton (located in the upper corner of the right side of the unit) in direction as shown on the picture and, then slide the Board up and remove from the unit.

3.3.4 Optical Sensor Board Removal

Perform the following step (see figure 4):

1. Disconnect the cable from the Sensor board.
2. Unscrew four screws holding the board in place and lift the board carefully making sure to not damage the side sensors.



Lift the sensor board in position parallel with bottom of the unit making sure not to damage the side sensors.



3.3.5 Sensor Board (0405084) Removal

Perform the following step (see figure 4):

1. Unscrew one screw holding the Board in place and disconnect the cable connected to the Board.

Tapping Screw #3x3/8", Phillips, PAN Head, Zi
8204001

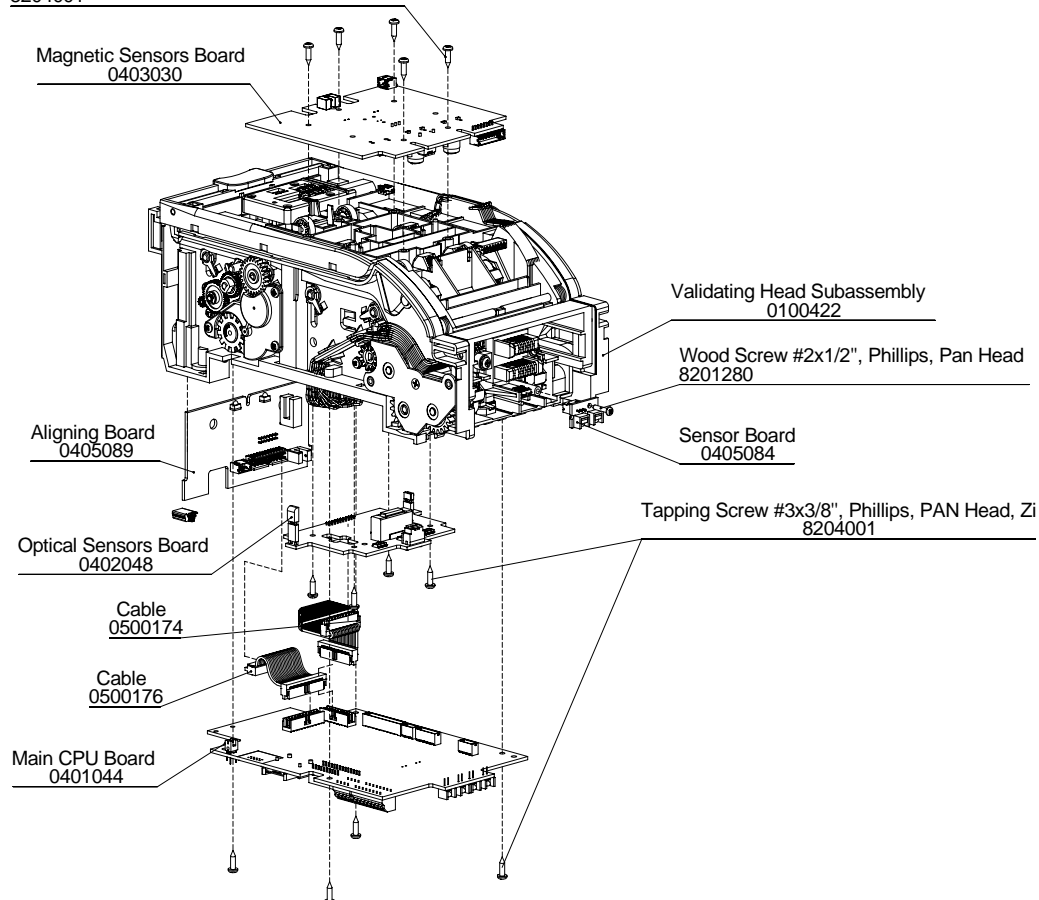


Figure 4 – Circuit Board Removal



CashCode®

A division of **CRANE** PAYMENT SOLUTIONS



FrontLoad Bill Validator
Part-2 Service Manual

3.4 Drive Assemblies Removal

3.4.1 Drive Assembly (0300196) Removal

Perform the following step (see figure 5):

1. Remove the four cover mounting screws and lift the cover.



Note: Make sure not to lose the small springs located under the cover.

2. Lift the two Shaft Assemblies located under the cover.
3. Remove the motor using a flat screwdriver.
4. Remove the two Levers and the Rollers connected to them.

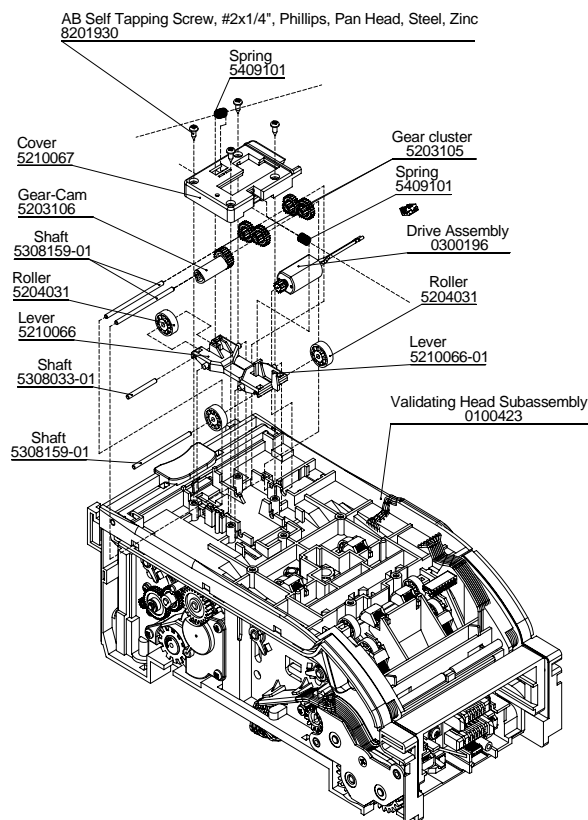


Figure 5 – Drive Assembly (0300196) Removal



3.4.2 Drive Assembly (0300199) Removal

Perform the following step (see figure 6):

1. Remove the interrupter from the gear cover using a flat screwdriver.



When removing the interrupter make sure to not damage the interrupter's teeth.

2. Remove three cover mount screws and lift the cover.
3. With pliers remove the two Shafts holding the gears in place, and then remove the gears.
4. Remove two motor mounting screws and remove the Motor.

3.4.3 Drive Assembly (0300198) Removal

Perform the following step (see figure 6):

1. Unscrew two screws holding the motor and lift the motor.

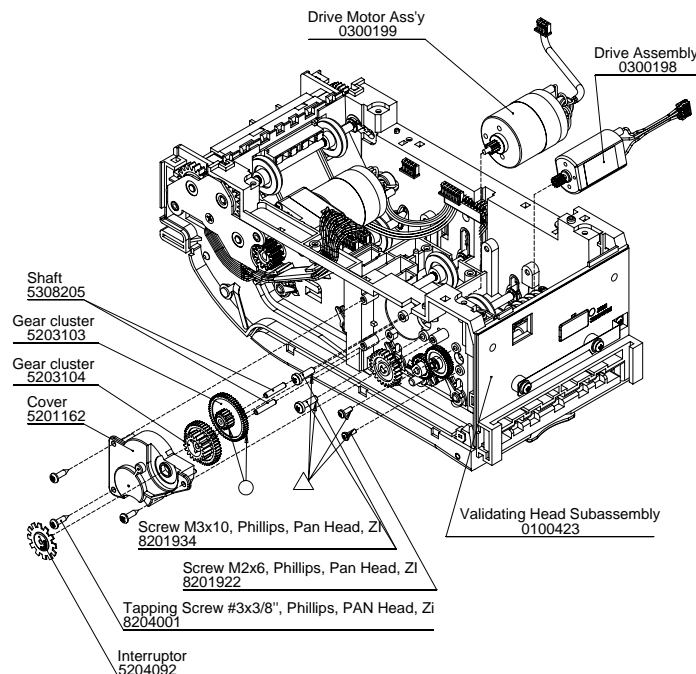


Figure 6 - Drive Assembly (0300199 and 0300196) Removal



CashCode®

A division of **CRANE** PAYMENT SOLUTIONS



FrontLoad Bill Validator
Part-2 Service Manual

3.4.4 Drive Assembly (0300052-24) Removal

Perform the following step (see figure 7):

1. To remove the Plate, unscrew the plate mounting screw.
2. Remove the three large gears, then remove small gear connected to the motor using a screwdriver.



Make sure to not damage the small gear.

3. Unscrew the two screws which hold the motor in place and remove the motor away from the unit.

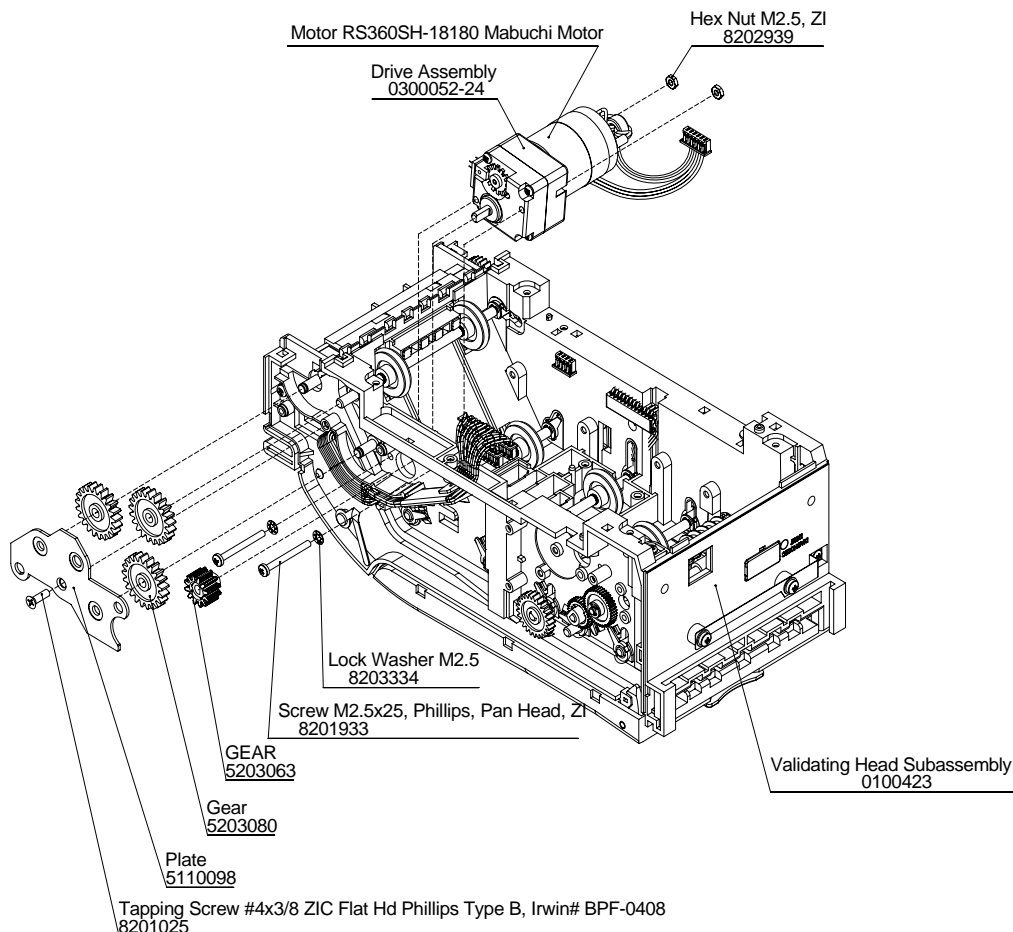


Figure 7 - Drive Assembly (0300052-24) Removal



3.5 Upper Guide Disassembly

3.5.1 Upper Guide Removal

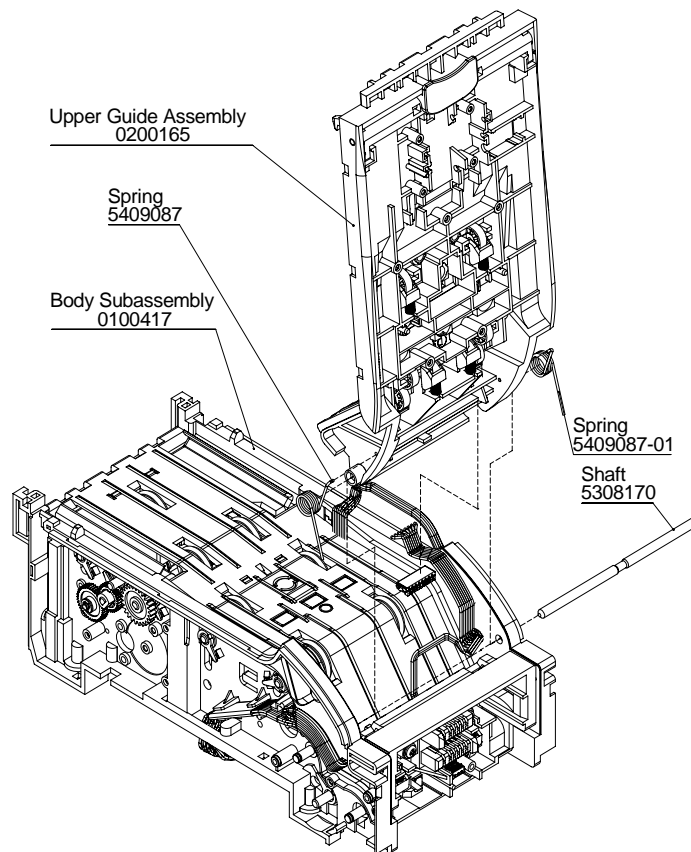


Figure 8 - Upper Guide Removal

Perform the following step (see figure 8):

1. From one side of the unit press the shaft which holds the cover door in place, then turn the unit to the other side and pull out the shaft.
2. Remove the Guide making sure not to lose the springs from both sides.



Hold the door in place while sliding the shaft, because it is under spring mechanism.



CashCode®

A division of **CRANE** PAYMENT SOLUTIONS



FrontLoad Bill Validator
Part-2 Service Manual

3.5.2 Rollers Removal

Perform the following steps (see figure 9):

1. With flat screwdriver press the Lever in opposite direction of the spring pressure, then lift the lever up and remove it.

 **Make sure not to lose the small springs connected to the levers, because springs are not secured to the levers.**

2. Pull out the small shaft and remove the roller from the shaft.
3. Repeat the procedure for all roller assemblies.

3.5.3 Latch Removal

Perform the following step (see figure 9):

1. Pull the Latch Shaft out of the unit.



Hold the Latch in place while sliding the shaft, because it is under spring tension



Make sure not to lose the small springs located under the Latch

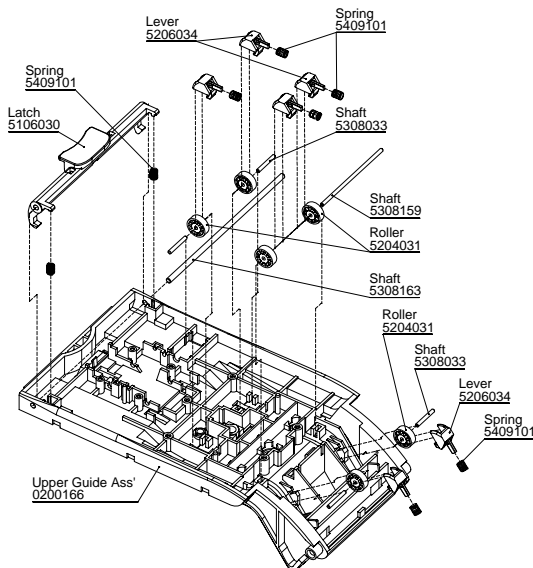


Figure 9 – Latch and Rollers Removal



3.5.4 Light Guides, Lenses and Eyelet Removal

Perform the following steps (see figure 10):

1. Gently release the latch in order to remove the Light Guide located on the front of the Upper Guide.
2. Remove the Cap, Eyelets and the Rear Light Guide using a flat screwdriver.
3. In order to remove the Lenses, squeezed the Lenses' latches, and then pull the lenses out from the other side of the Upper Guide

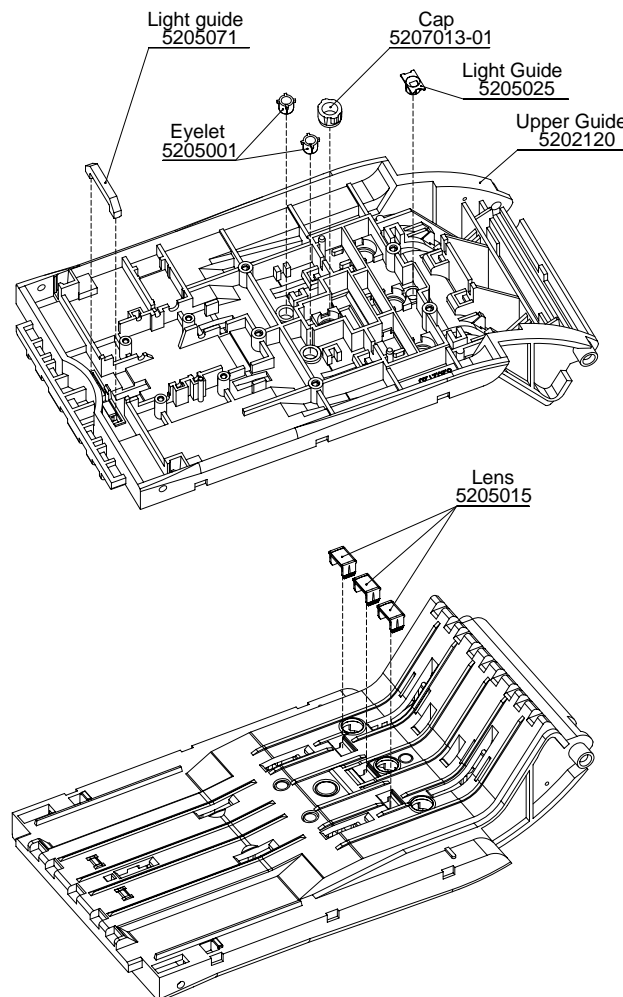


Figure 10 - Light Guides, Lenses and Eyelet Removal



3.6 Body Disassembly

3.6.1 O-Ring Shaft Disassembly

Perform the following steps (see figures 11.a, 11.b and 12):

1. Remove the retaining rings from each gear, then pull out the gears.

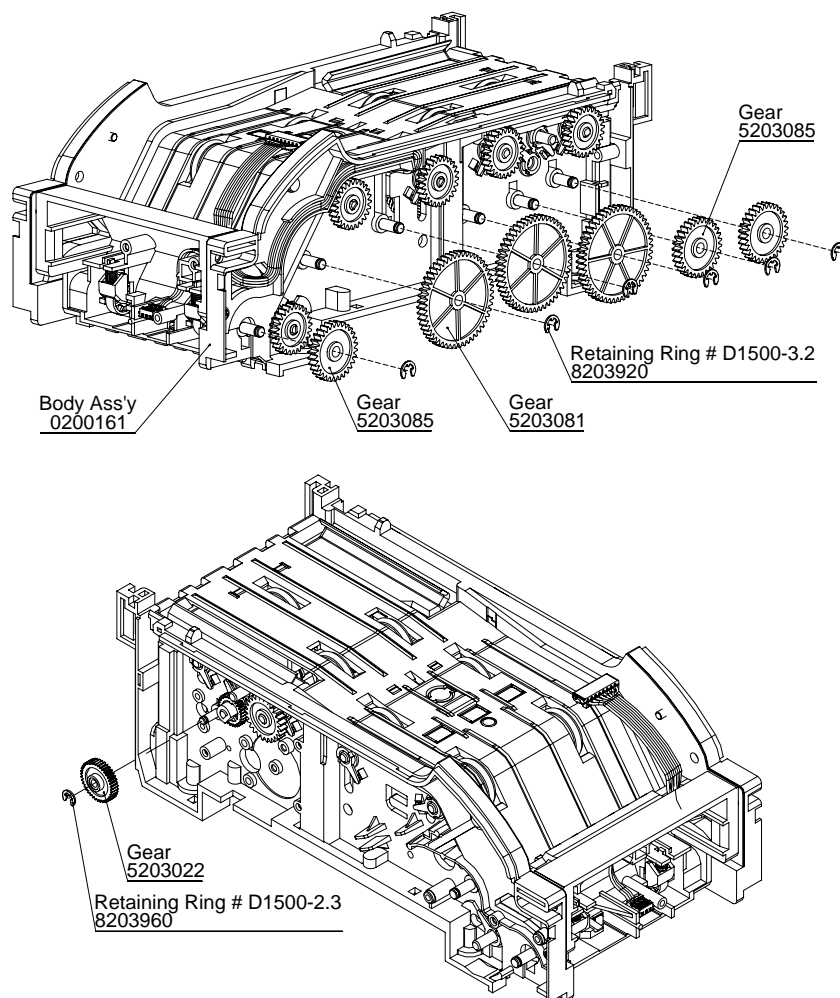


Figure 11.a - Gears Disassembly



Make sure the gears' teeth align properly during the assembling process



2. Remove the remaining gears using a flat screwdriver.

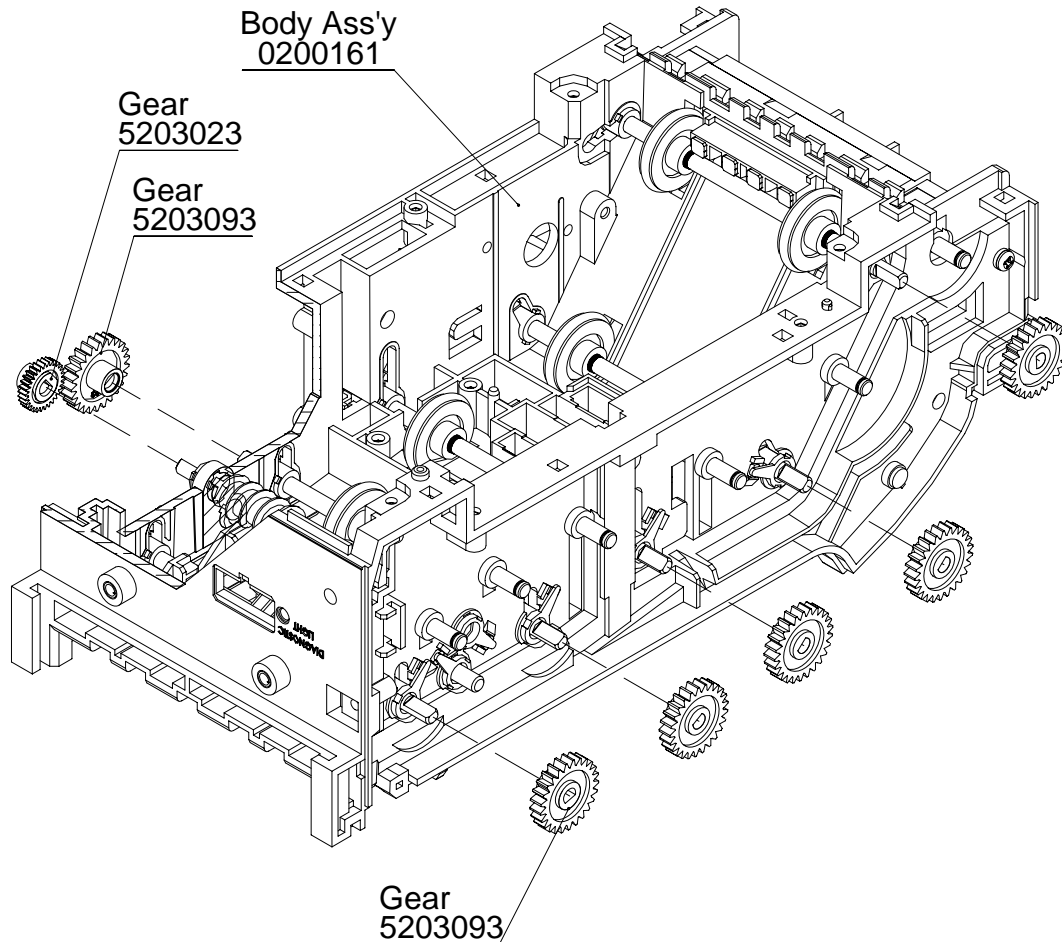


Figure 11.b – Rollers Removal

3. Remove the retaining rings from each shaft using screwdriver.



Retaining rings are located on the left end of the shafts (see figure 11.b). Once removed, the retaining ring should not be used.

4. Flip the bearings from each side of the shafts in open position so can be removed easily.



When removing the bearing makes sure that the bearing's races are parallel with the opening as shown.



CashCode®

A division of **CRANE** PAYMENT SOLUTIONS



FrontLoad Bill Validator
Part-2 Service Manual

Validating Head

5. Remove the Shaft Assemblies.

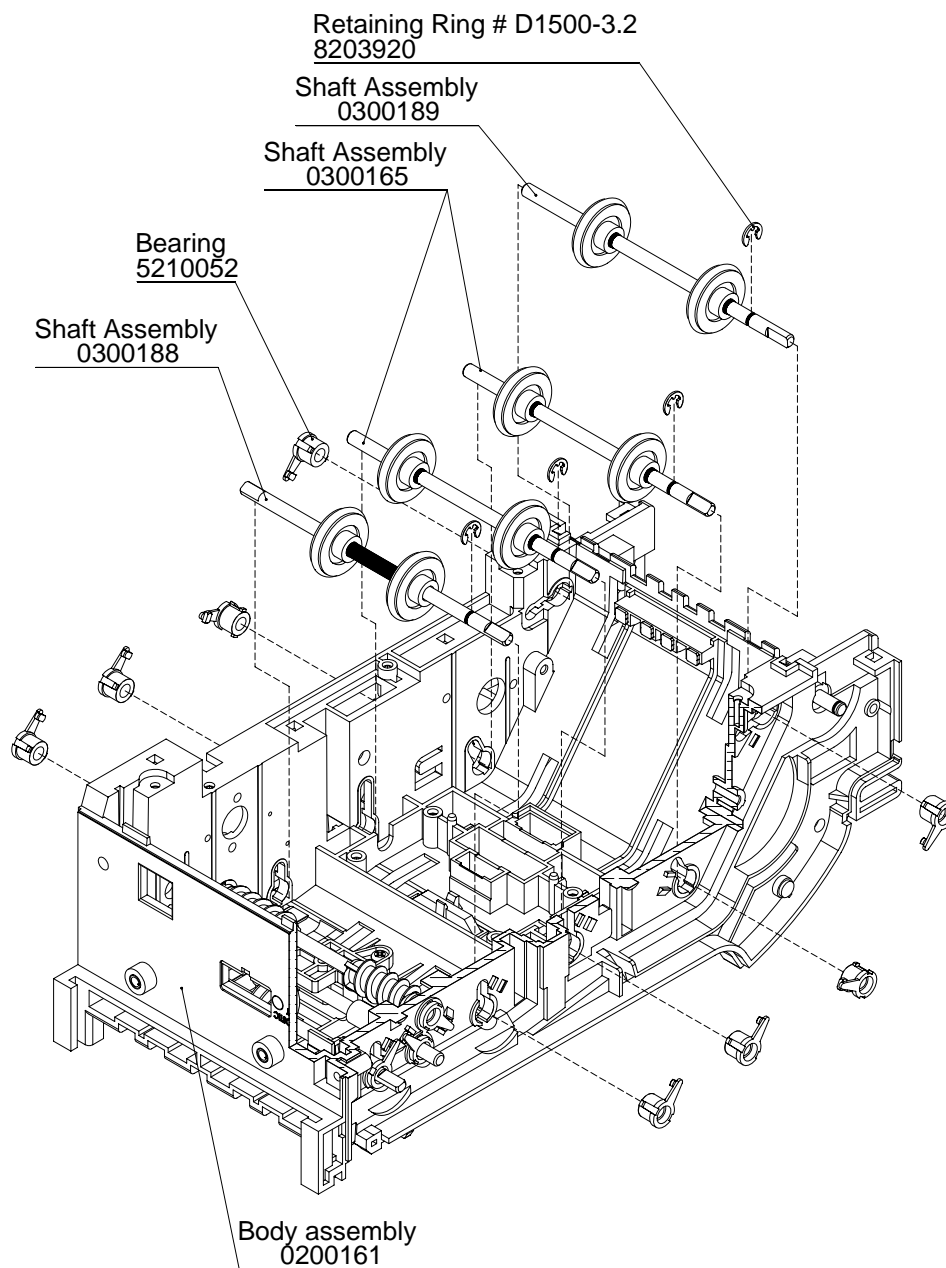



Figure 12 - Rollers Removal



3.6.2 Lip and Front O-Ring Shaft Removal

Perform the following steps (see figures 13.a and 13.b):

 In order to remove the front shaft assembly, first must be removed the Worm Shaft Assembly and then the LIP together with the front shaft assembly.

1. Remove the retaining ring securing Worm Shaft Assembly located on the left side of the unit, then unlock and remove the Worm Shaft bearings from both sides of the assembly.
2. Lift the Worm Shaft.

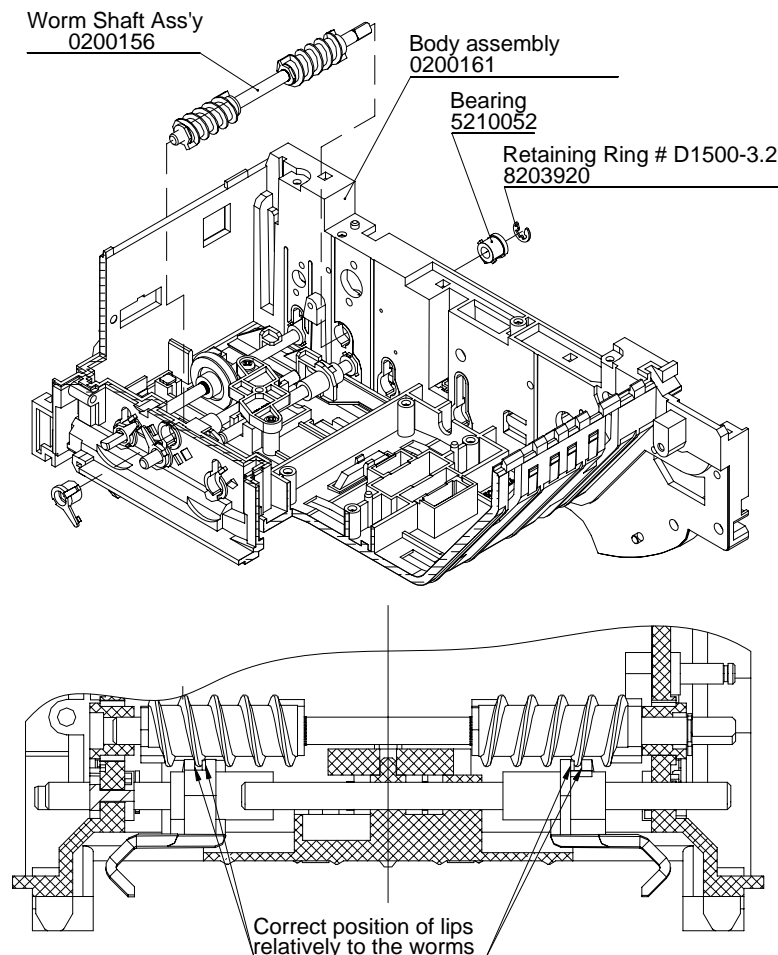


Figure 13.a - Lip and Front Shaft Removal



2. Unscrew two screws from the Holder and remove them from the unit.
3. Unlock and remove the bearings holding the LIP in place.
4. Unlock and remove the bearings holding the Front Shaft Assembly, then remove the retaining ring.
5. Lift the Front Shaft Assembly together with the LIP.

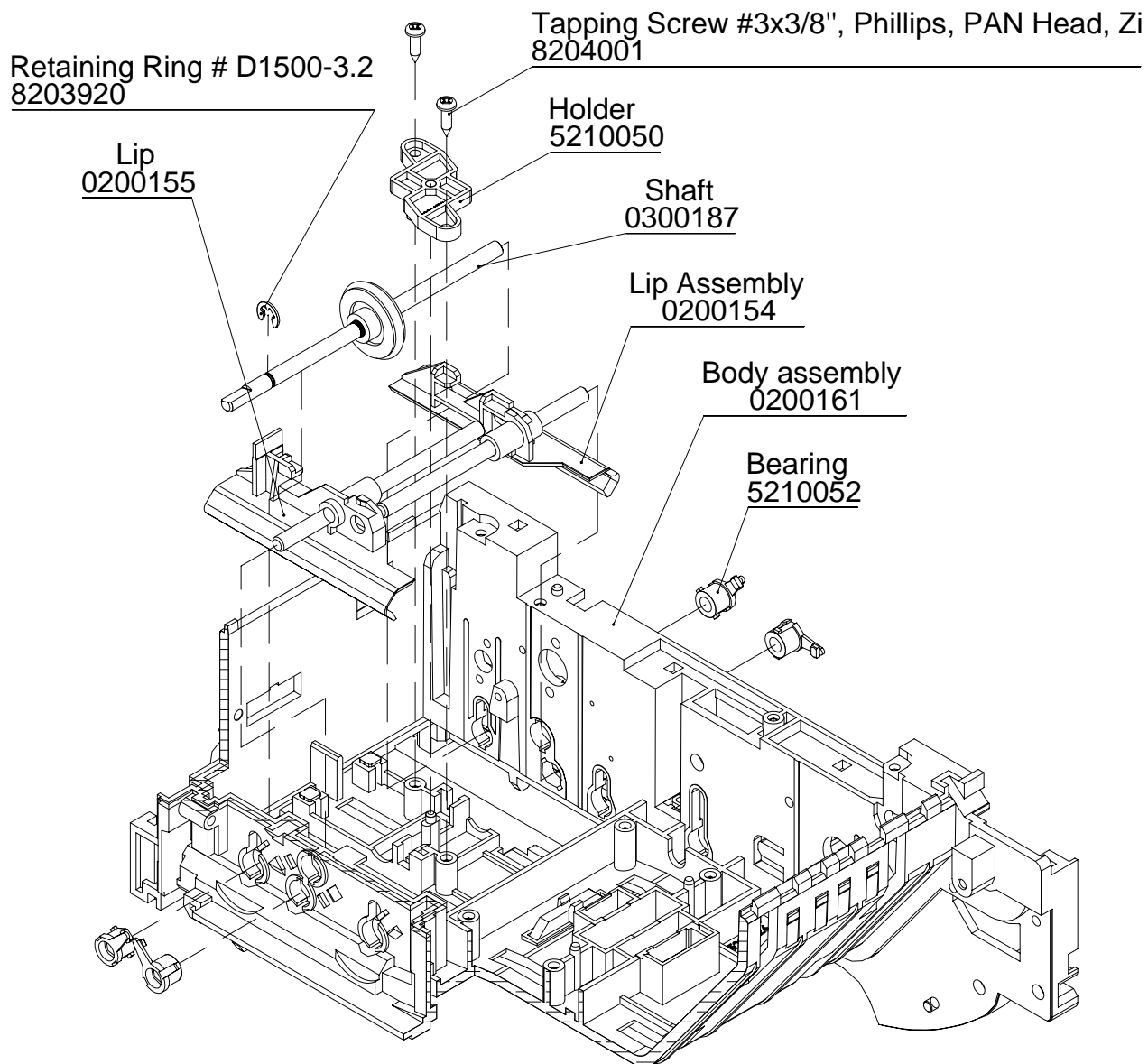


Figure 13.b - Lip and Front Shaft Removal

3.6.3 Cable (0500175 and 0500152) Removal

Perform the following steps (see figure 14):

1. Remove two connector mounting screws to release the cable (0500175)
2. Slide the other end of the cable trough the unit openings.
3. Release the Cable Cover latches and remove the Cable Cover.
4. Slide the end of the Cable (0500152) trough the openings and remove it.

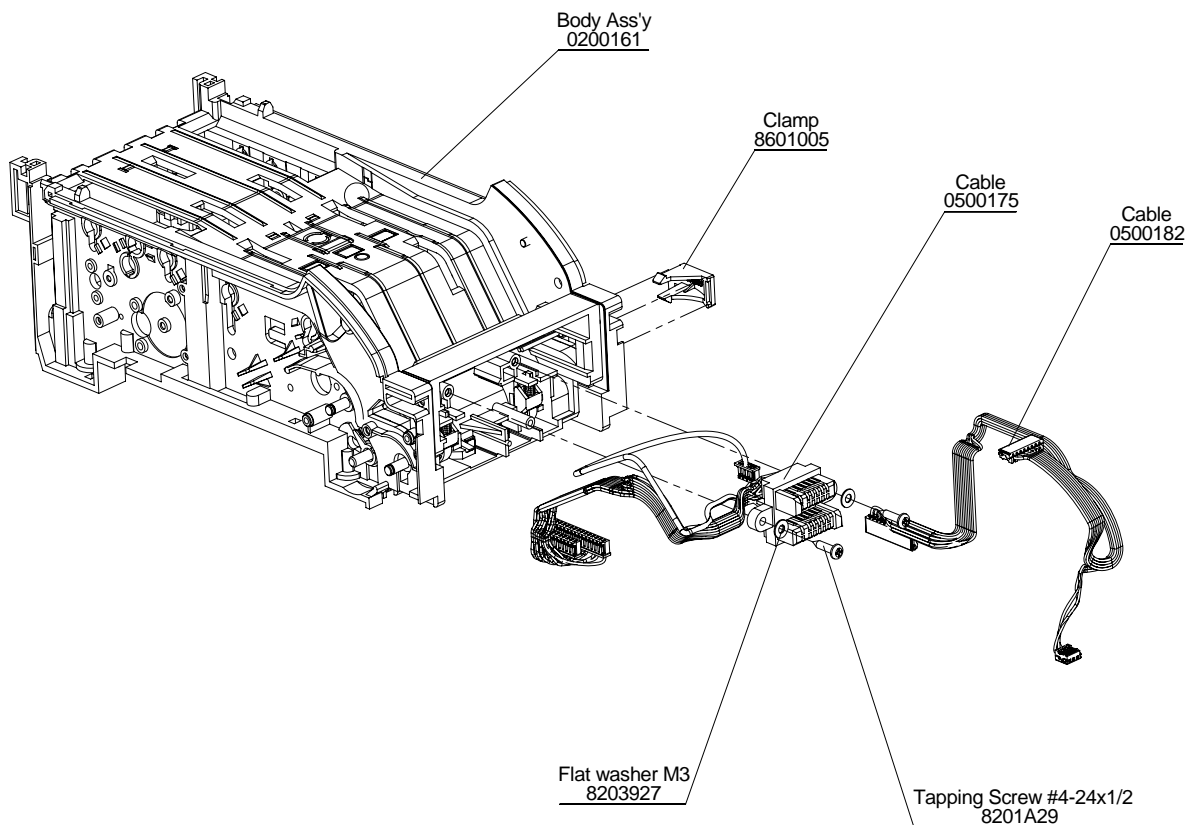


Figure 14 – Cable (0500175) Removal



3.6.4 Rear Guide Disassembly

Perform the following steps (see figures 15.a and 15.b):

1. Remove two screws located on each side of the Rear Guide Assembly.
2. Insert a flat screwdriver between the Rear Guide and the unit and release the two buttons holding the Rear Guide in place.

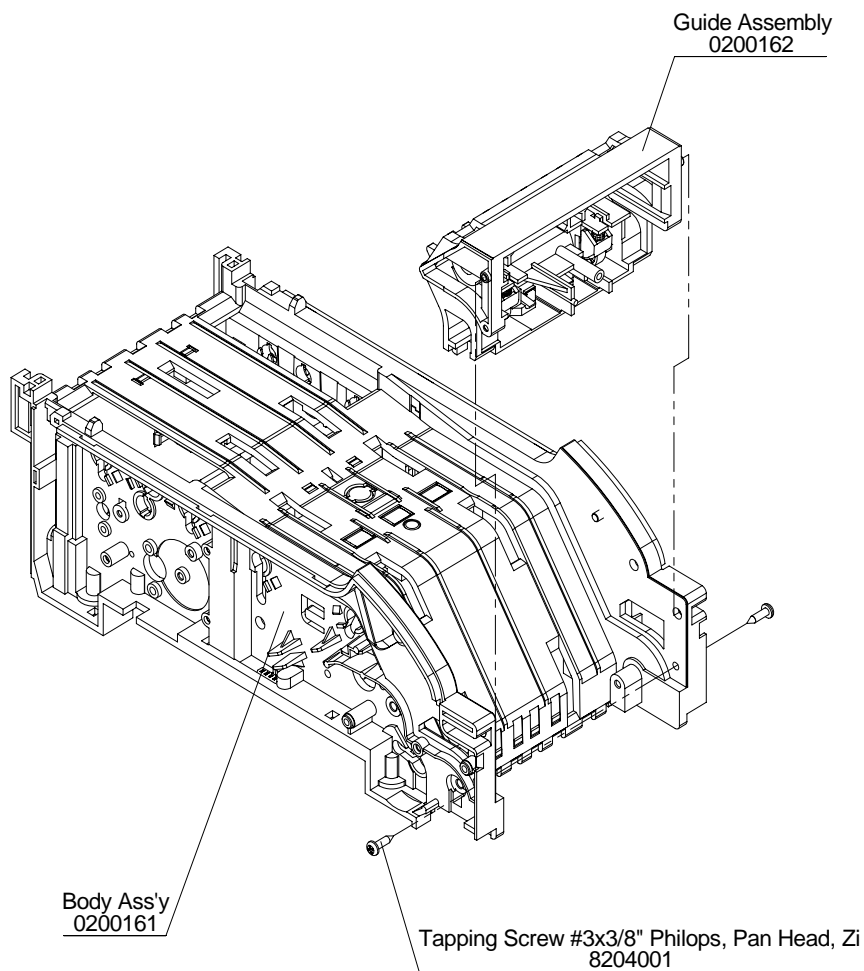


Figure 15.a - Rear Guide Disassembly



3. With a flat screwdriver press the Lever in opposite direction of the spring pressure, then lift the lever up and remove it.



Make sure not to lose the small springs connected to the levers. Springs are not secured to the levers.

4. Lift the small shaft and remove the roller from the shaft.
5. In order to remove the Light Guides, gently release the latch holding the Light.

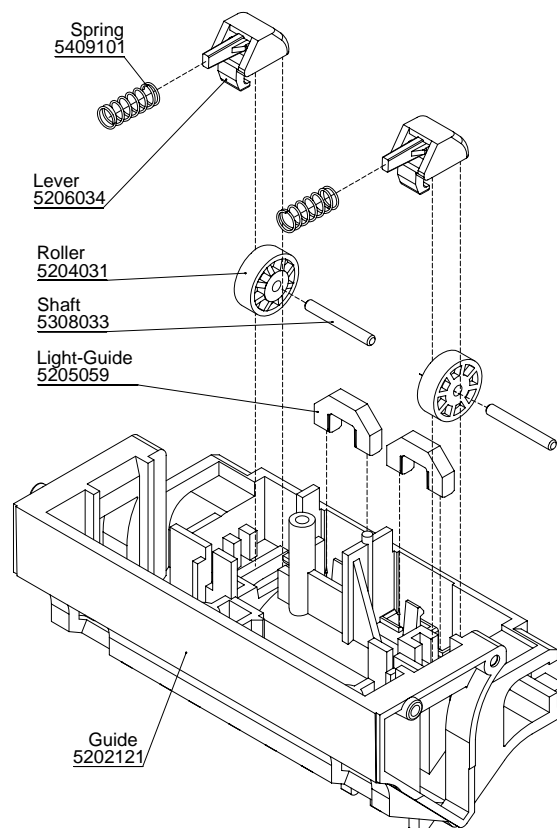


Figure 15.b - Rear Guide Disassembly



3.6.5 Light Guides, Lens and Eyelet Removal

Perform the following steps (see figures 16 and 17):



In general all Lights, Lenses and Eyelets should be replaced after their removal.

1. Release the latch in order to remove the Light Guide #5205071
2. Press the Light Guides #5205058 and #5205025 from the bill pathway side in order to remove them.
3. Lift the Light Guide #5205073 using tweezers

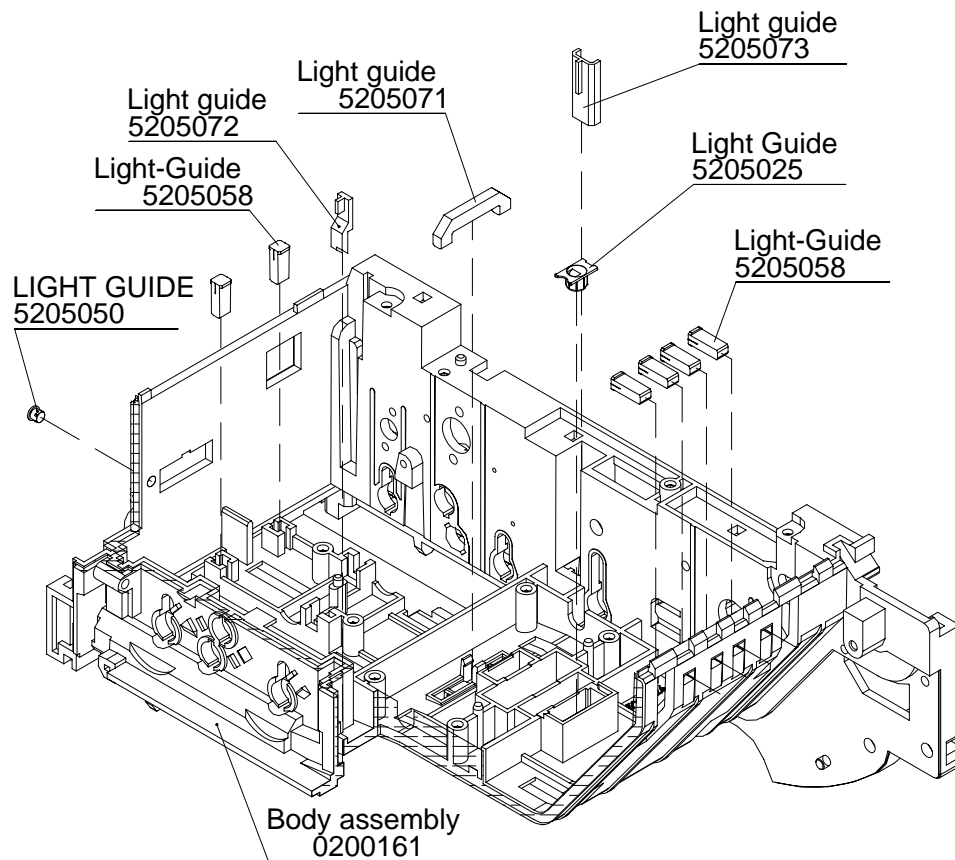


Figure 16 - Light Guides Removal



4. Pres the Lenses latches and remove the Lenses.
5. Pres the Eyelet latches and remove the Eyelet.

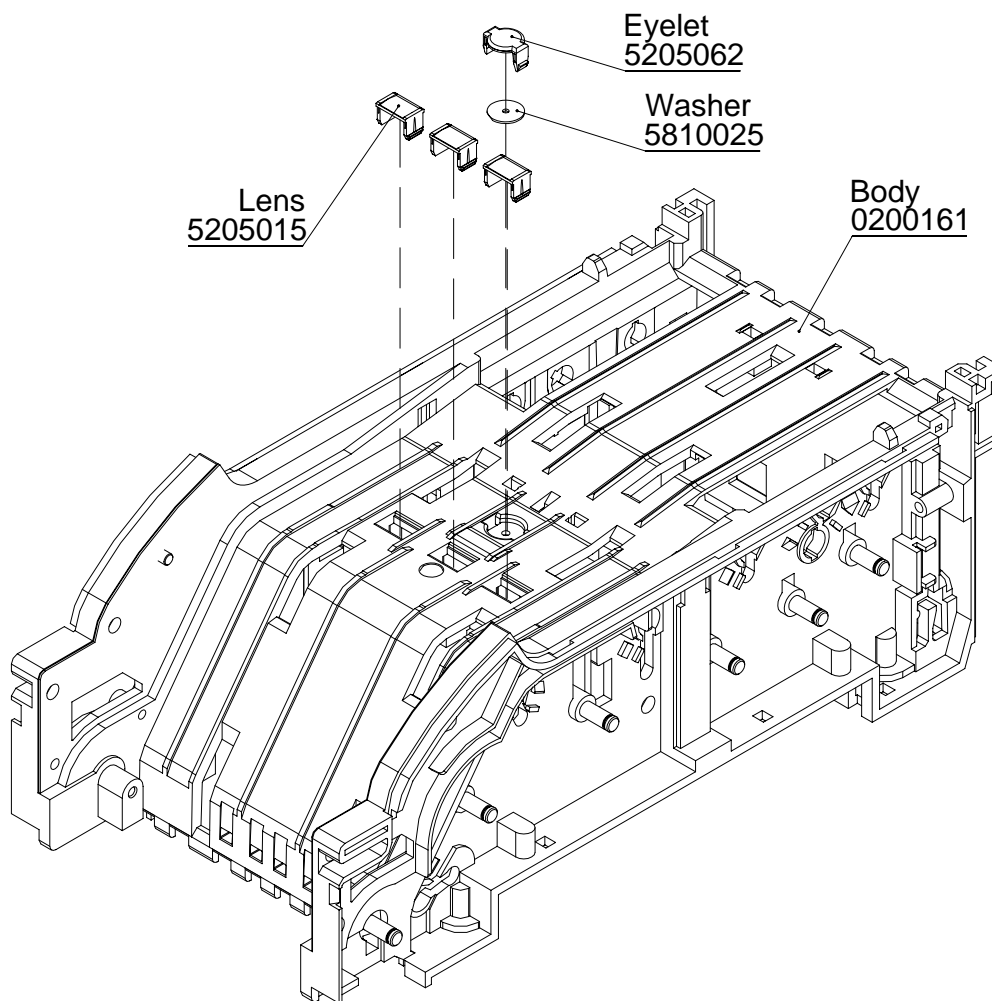
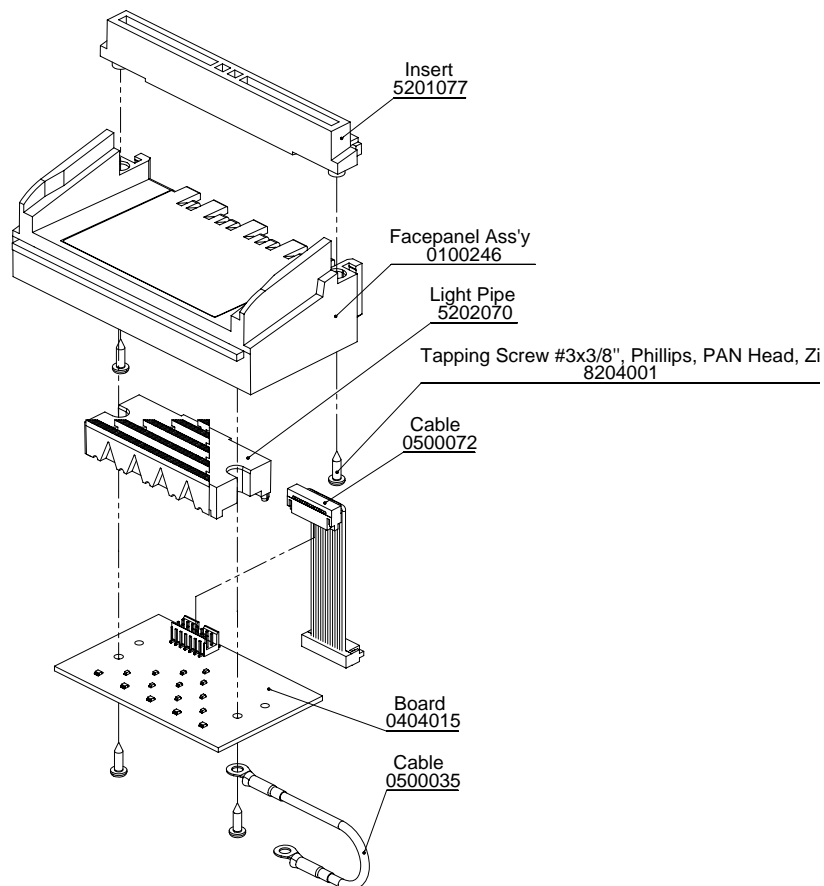


Figure 17 - Lens and Eyelet Removal



4. BEZEL

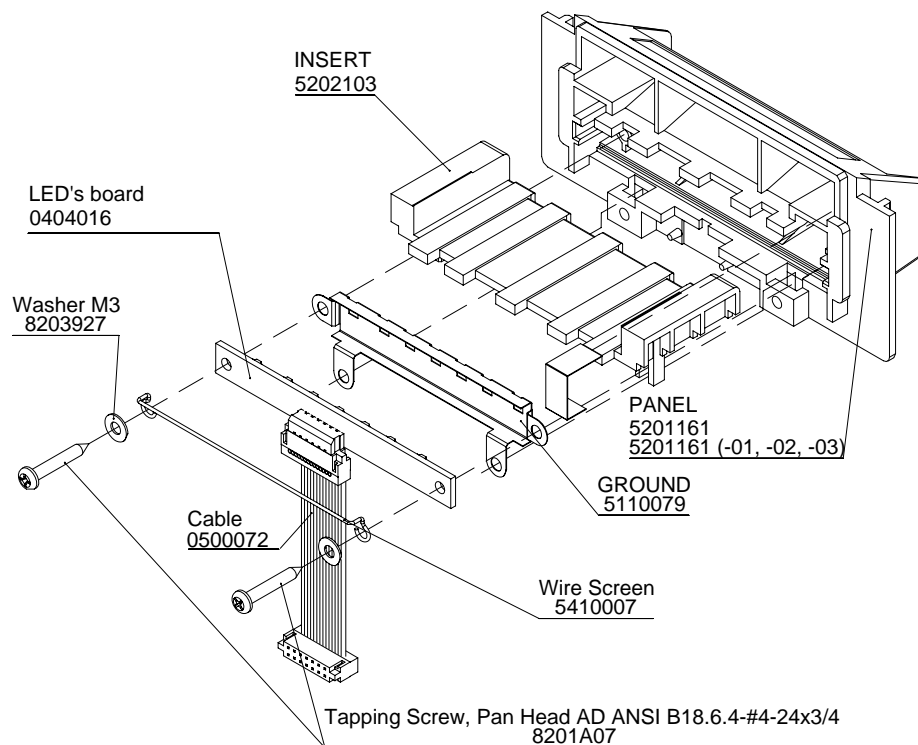
4.1 Bezel with runway lights (FLS-5101)



Part ID#	Description	Qty
0100246-03	Face panel Assembly	1
5201160	Insert	1
5202070	Light Pipe	1
0500035	Cable	1
0500072	Cable	1
0404015	Board	1
8204001	Tapping Screw #3x3/8", Phillips, PAN Head, Zinc	4



4.2 Bezels with indicator light Green / Red (FLSB-5301, 5303, 5305, 5307)



Part ID#	Description	FLSB-5301/ Qty	FLSB-5303 /Qty	FLSB-5305/ Qty	FLSB-5307/ Qty
5201161	Panel	1			
5201161-01	Panel		1		
5201161-02	Panel			1	
5201161-03	Panel				1
5202103	Insert	1	1	1	1
5110079	Ground	1	1	1	1
0404016	LED's board	1	1	1	1
0500072	Cable	1	1	1	1
5410007	Wire Screen	1	1	1	1
8201A07	Tapping Screw, Pan Head AB ANSI B18.6.4-#4-24x3/4	2	2	2	2
8203927	Flat washer M3	2	2	2	2



CashCode®

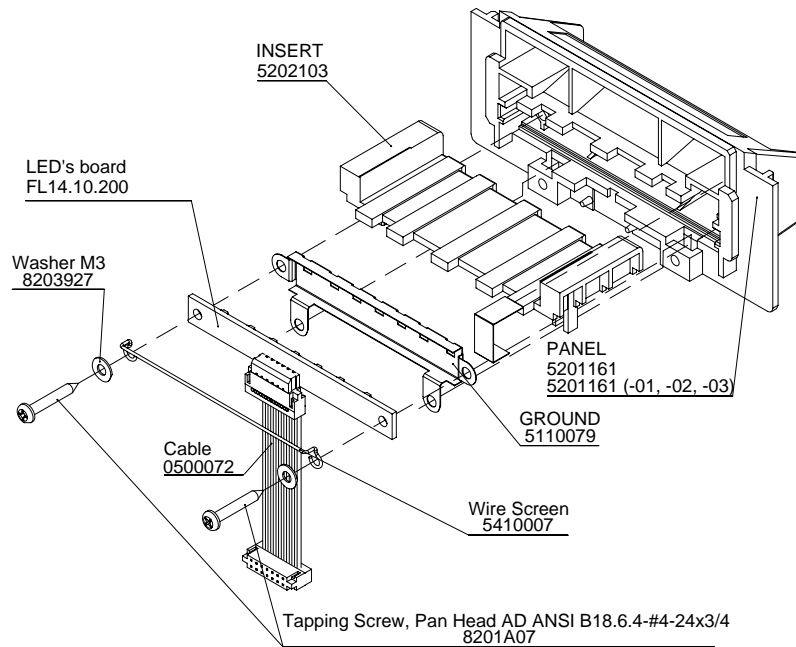
A division of **CRANE** PAYMENT SOLUTIONS



FrontLoad Bill Validator
Part-2 Service Manual

Bezel

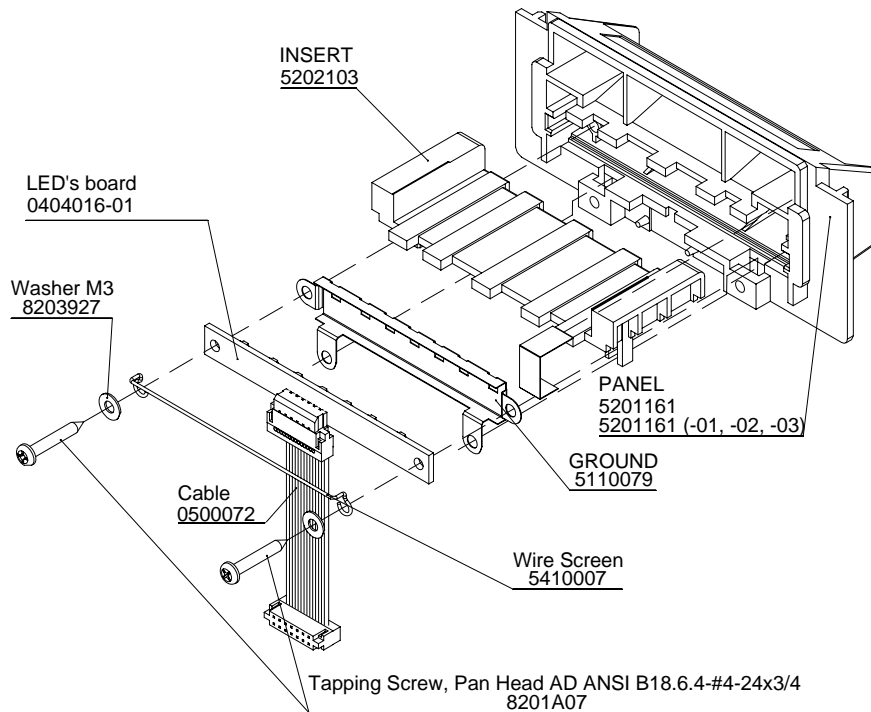
4.3 Bezels with indicator light Blue / Red (FLSB-5301R, 5303R, 5305R, 5307R)



Part ID#	Description	FLSB-5301/ Qty	FLSB-5303 /Qty	FLSB-5305/ Qty	FLSB-5307/ Qty
5201161	Panel	1			
5201161-01	Panel		1		
5201161-02	Panel			1	
5201161-03	Panel				1
5202103	Insert	1	1	1	1
5110079	Ground	1	1	1	1
FL14.10.200	LED's board	1	1	1	1
0500072	Cable	1	1	1	1
5410007	Wire Screen	1	1	1	1
8201A07	Tapping Screw, Pan Head AB ANSI B18.6.4-#4-24x3/4	2	2	2	2
8203927	Flat washer M3	2	2	2	2



4.4 Bezels with indicator light Blue / Red (FLSB-B)



Part ID#	Description	FLSB-5301/ Qty	FLSB-5303 /Qty	FLSB-5305/ Qty	FLSB-5307/ Qty
5201161	Panel	1			
5201161-01	Panel		1		
5201161-02	Panel			1	
5201161-03	Panel				1
5202103	Insert	1	1	1	1
5110079	Ground	1	1	1	1
0404016-01	LED's board	1	1	1	1
0500072	Cable	1	1	1	1
5410007	Wire Screen	1	1	1	1
8201A07	Tapping Screw, Pan Head AB ANSI B18.6.4-#4-24x3/4	2	2	2	2
8203927	Flat washer M3	2	2	2	2



CashCode®

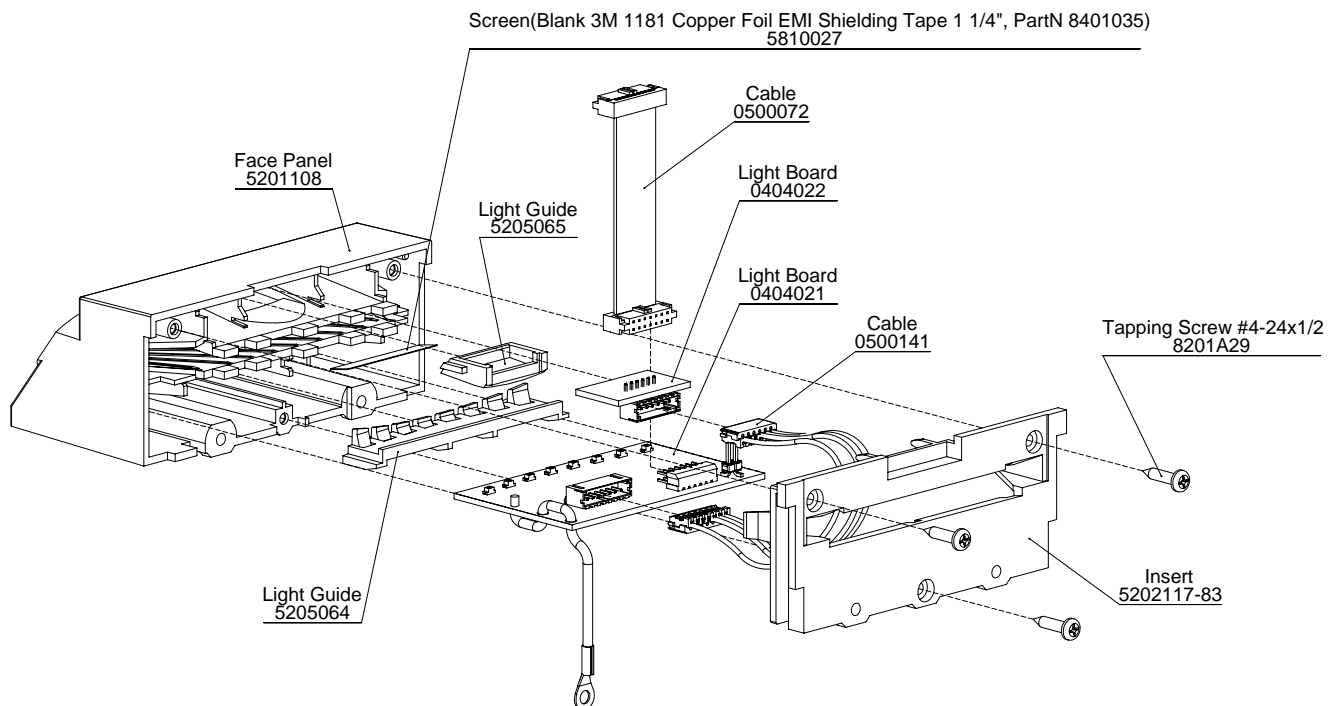
A division of **CRANE** PAYMENT SOLUTIONS



FrontLoad Bill Validator
Part-2 Service Manual

Bezel

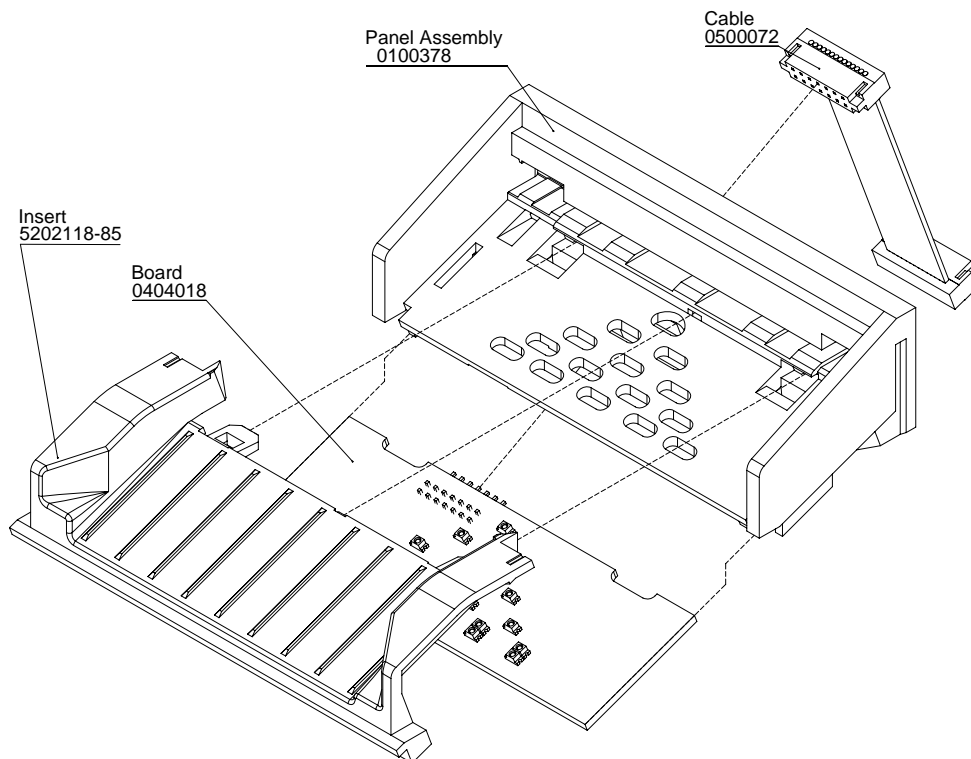
4.5 Bezel with indicator light oval shaped (FLSB-5901)



Part ID #	Description	Qty.
0500072	Cable	1
0500141	Cable	1
0404021	Light Board	1
0404022	Light Board	1
5201108	Face Panel	1
5202117-85	Insert	1
5205064	Light Guide	1
5205065	Light Guide	1
5810027	Screen(Blank 3M 1181 Copper Foil EMI Shielding Tape 1 1/4", Part N 8401035)	1
8201A29	Tapping Screw #4-24x1/2	3



4.6 Bezel with runway light, open from top (FLSB-5701)



Part ID #	Description	Qty
0100378	Panel Assembly	1
5202118-85	Insert	1
0404018	Board	1
0500072	Cable	1



CashCode®

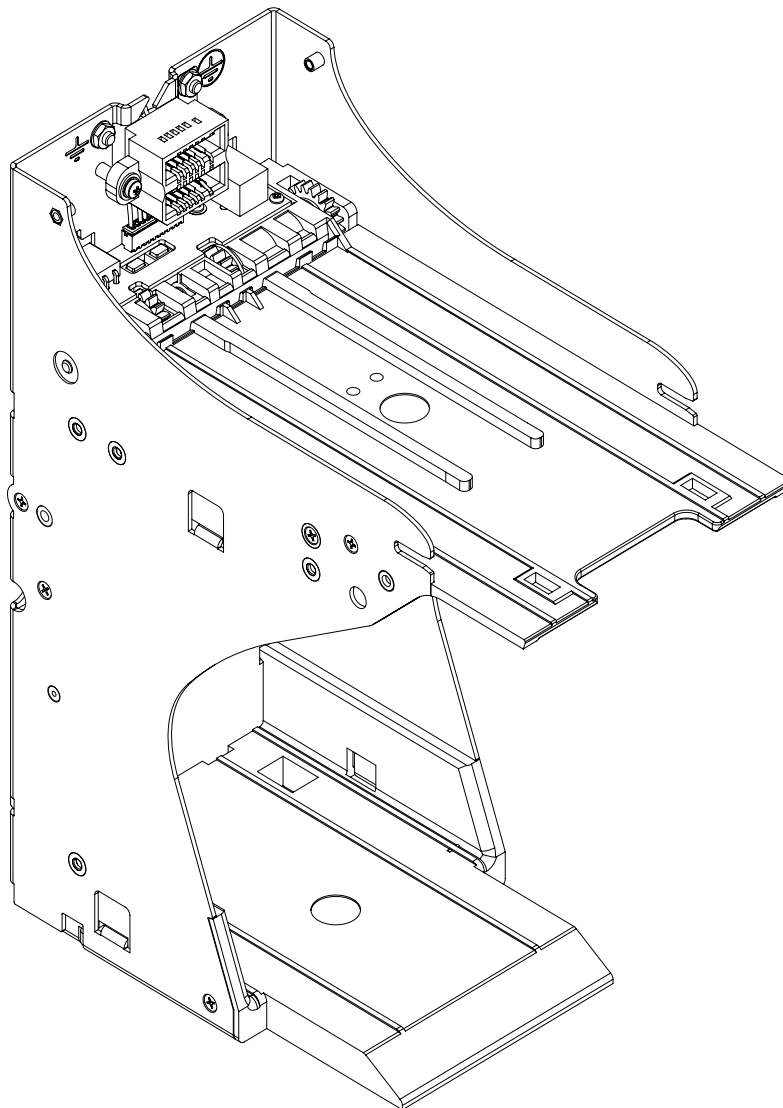
A division of CRANE PAYMENT SOLUTIONS



FrontLoad Bill Validator
Part-2 Service Manual

Housing

5. HOUSING





5.1 Housing Part List

Part ID	Description	Qty.
5110095	Ground bus	1
0200160	Upper guide Assembly	1
5202122	Guide	1
5202147	Guide	1
5201123	Cover	1
5201123-01	Cover	1
5210051-01	Lever	1
5210051	Lever	1
5409088	Spring	1
5409088-01	Spring	1
5308169	Shaft	1
5203082	Gear	1
5203083	Gear	1
5203092	Gear	1
5203094	Gear	1
5110097	Contact	1
8202A13	Hex Nut M4, ZI	1
8203920	Retaining Ring # D1500-3.2	2
8201024	Tapping Screw #4x1/2, Zinc, Flat Head Phillips Type B, Irwin# BPF-0408	7
8203967	Washer M4, Plain, Zinc	2
0500183	Cable Assembly	1
8203002	Lock Washer M3 Internal Tooth, Zinc	2
8201934	Screw M3x10 Philips, Pan Head, Zinc	2
8201930	AB Self Tapping Screw #2x1/4" Philips, Pan Head Steel, Zinc	2
0405090	USB Interface Board Assembly	1
0500199	Cable Cassette Switch	2
1405	Subminiature Snap Action Switch SS-5GL13-T, OMRON	2
8201280	Wood Screw #2x1/2" Philips, Pan Head	2
8201930	AB Selt Tapping Screw #2x1/4" Philips, Pan Head Steel, Zinc	2
8201280	Wood Screw # 2x1/2", Pan Head	2



CashCode®

A Division of **CRANE** PAYMENT SOLUTIONS



FrontLoad Bill Validator
Part-2 Service Manual

Housing

5.2 Housing Disassembly and Exploded View

Perform the following steps (see figures 17.a and 17.b):

1. Unscrew the two screws holding the Cable Assembly in place and remove the Cable.
2. Remove three screws from the USB Board and lift the Board (if present).
3. Remove two retaining rings located in the middle of the shaft to release the shaft, then slide the shaft out from the unit.
4. Remove the gears.
5. Unscrew two Upper Guide mounting screws from each side of the unit and release two latches located on each side of the Upper Guide.
6. Remove the Upper Guide.

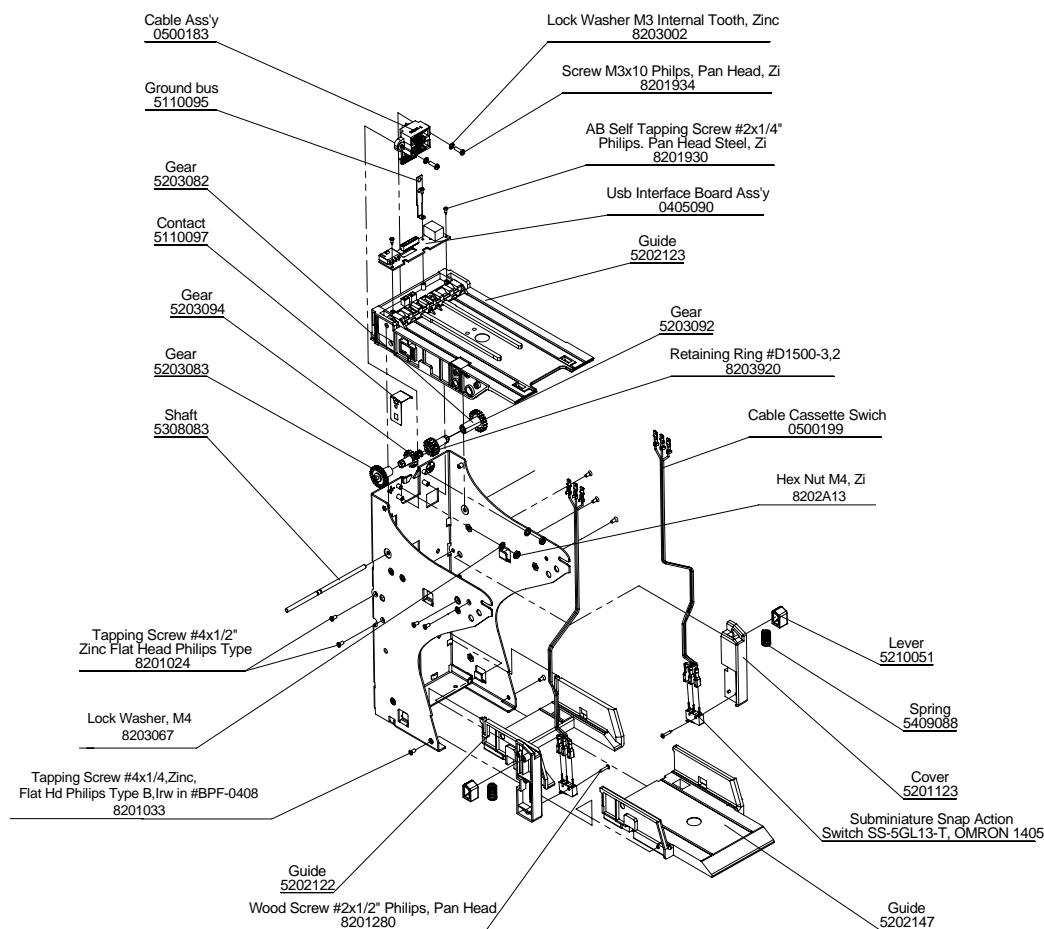


Figure 17.a - Housing exploded view



7. Unscrew two screws from each Cover and remove them.
8. To remove the lower Guide, unscrew two Lower Guide mounting screws from each side of the unit, then pull the Lower Guide forward and lift it.
9. Push the Light Guides from the bottom side of the Upper Guide Assembly in order to remove them.
10. Remove the spring.

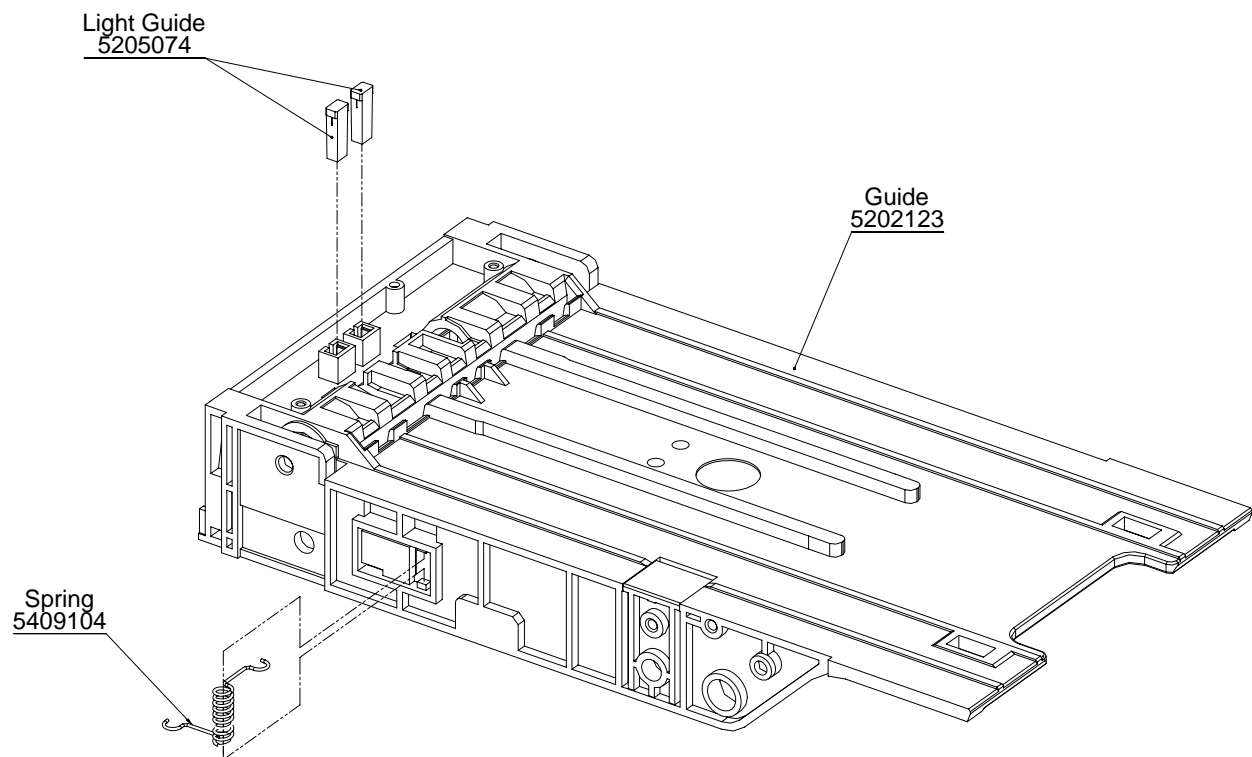


Figure 17.b - Upper Guide Disassembly



CashCode®

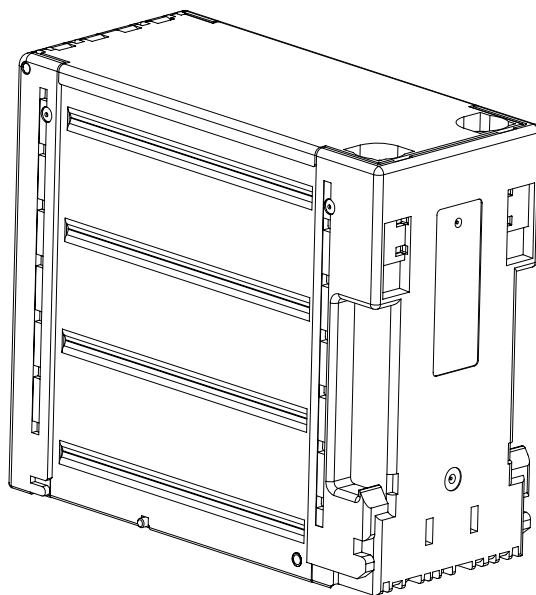
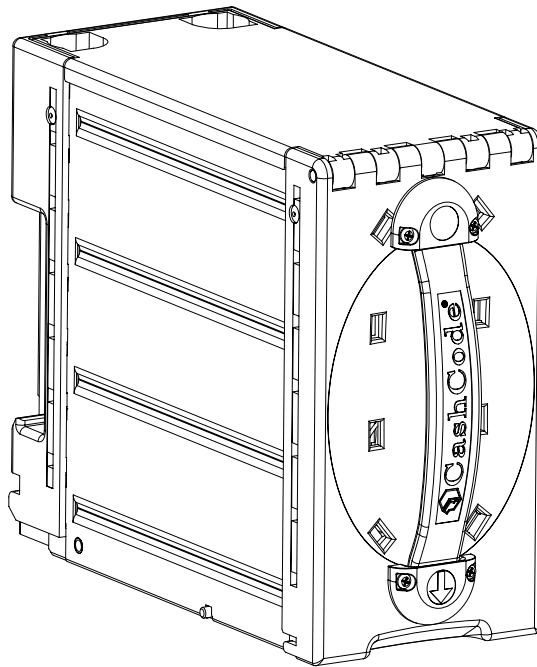
A division of **CRANE** PAYMENT SOLUTIONS



FrontLoad Bill Validator
Part-2 Service Manual

Cassette

6. CASSETTE





6.1 Cassette Part List

Part_ID	Description	0100433/ Qty.	0100433-01/ Qty.
5110086	Hasp	2	2
5110086-03	Hasp (mainly for Australia)	2*	2*
0100397-02	Case Assembly	1	
0100397- 03	Case Assembly		1
5201120	Cover	1	
5201120-01	Cover		1
5201114	Pressure Plate		1
5308149	Shaft		1
8203009	#4 (ID3.2xOD7.9x0.8) Flat Washer SPAENAU No277		2
8203920	Retaining Ring # D1500-3.2		2
8201A29	Tapping Screw #4-24x1/2		2
8206927	Latching Cam Lock 5/8", 90 degree rotation, B5800 Series, ILCO UNICAN		1
0100374	Stacker Base Assembly		1
0300159	Roller-Gear Assembly		2
0200146	Stacker Base Assembly		1
0300164	Roller-Gear Assembly		4
5203086	Gear		1
5308151	Shaft		1
5201119	Cover		1
5201119-01	Cover		1
5203090	Gear		4
5209001	Flat spring		2
8201A29	Tapping Screw #4-24x1/2		4
8208004	Teflon® PTFE Balls 6.35+/- 0.05mm, ptfeparts.com		4
8412006	Lubricant Super Lube with Syncolon (PTFE)		0.05g
0300162	Platform Assembly		1
5204073	Lever		1
5204073-01	Lever		1
5204074	Lever		1
5204074-01	Lever		1
5308152-01	Shaft		3
5308152	Shaft		1



5204075	Link	2
5110087	Link	2
5308153	Shaft	1
5409086	Spring	1
0300163	Rod Assembly	1
5308203-01	Shaft	1
5203091	Gear	1
8203A41	16FWRT006032 Nylon Retaining Washers FWRT 6-032, WashersUSA.com	1
8412006	Lubricant Super Lube with Sync Lon (PTFE)	0.04g
5205059	Light Guide	1

* Special order only

6.2 Cassette Types

1. Cassette 0100433-02 with capacity of 600 bills.
2. Cassette 0100433-03 with capacity of 1000 bills.

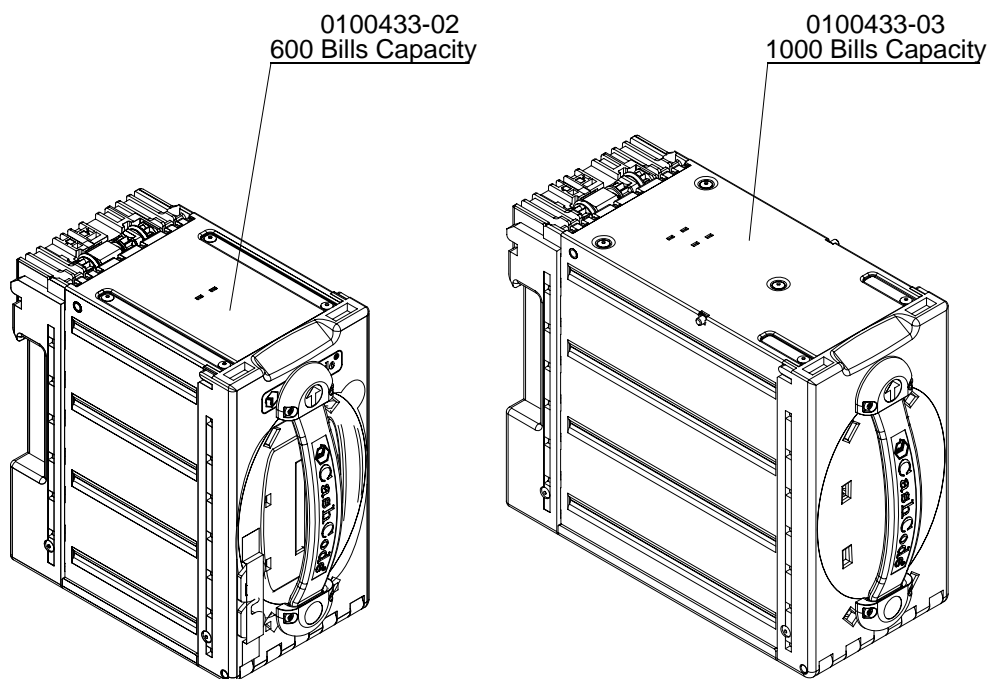


Figure 18 - Cassette Types



6.3 Cassette Disassembly

6.3.1 Door Removal

Perform the following steps (see figure 19):

1. Remove two retaining rings securing the shaft in place, then slide the shaft out of the unit.
2. Release the Cap latches and remove the Cap.
3. Unscrew two Cam Lock mounting screws and remove the Cam Lock.

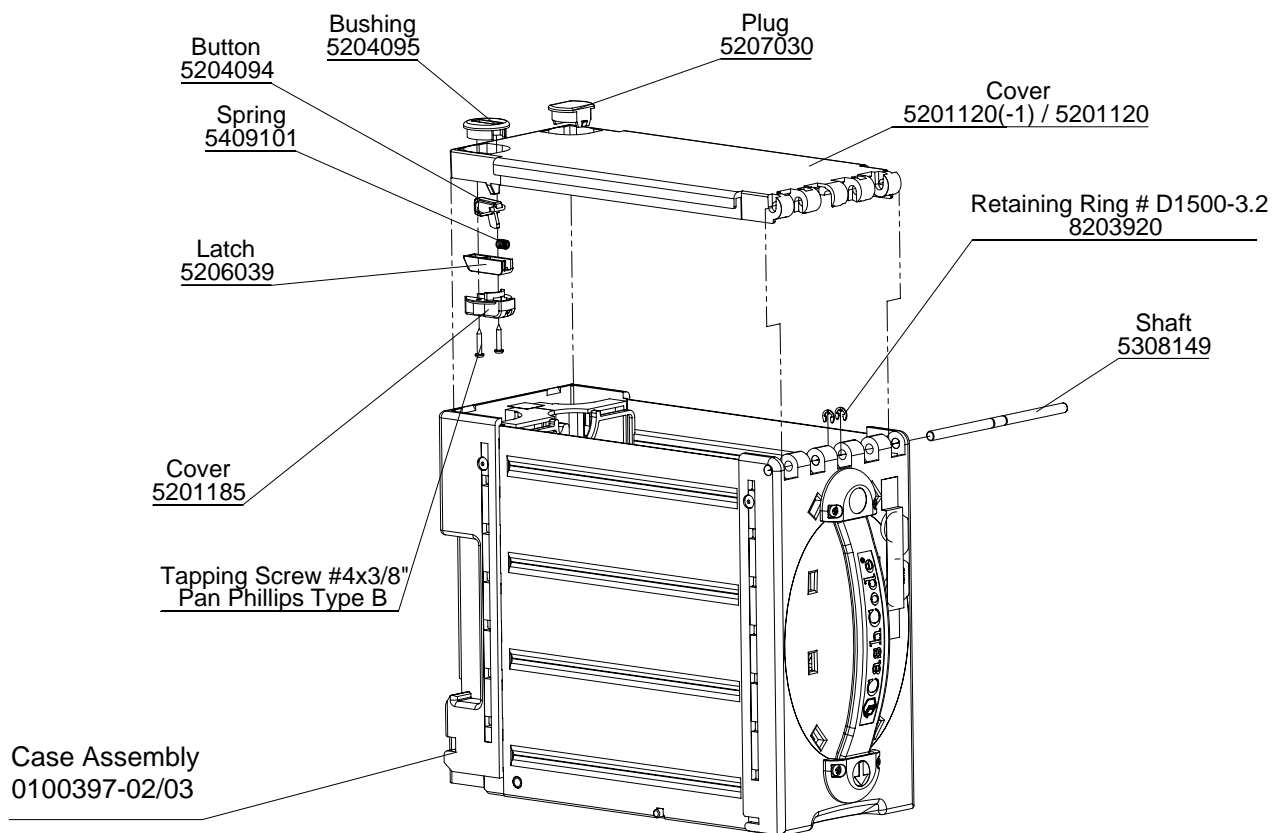


Figure 19 - Door Removal



6.3.2 Stacker Base Assembly Disassembly (Service Center Strictly):

Perform the following steps (see figures 20.a, 20.b, 20.c and 20.d):



CashCode do not permit this operation to be performed by any other than certified service center personnel or at CashCode. Under no circumstance, this operation can be performed in the unit installed in the field at site. Your decision to perform this operation will be at your own risk & discretion. CashCode will not be responsible for any liabilities and/or damages which may occur.

1. Remove two Stacker mounting screws to release the Stocker.

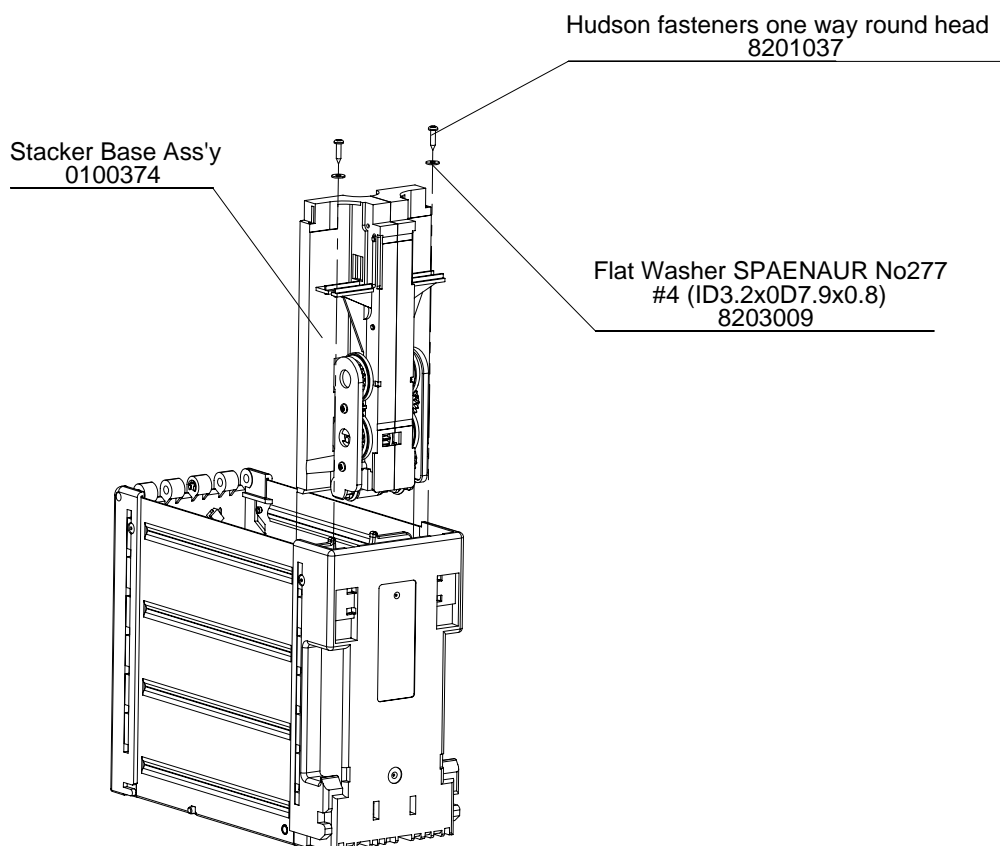


Figure 20.a – Stacker Removal



2. Unscrew two screws from each Gear Cover and remove them.
3. Remove four Teflon Balls.
4. Remove all gears from both sides of the Stocker and slide the shaft holding the gears with black rubber.

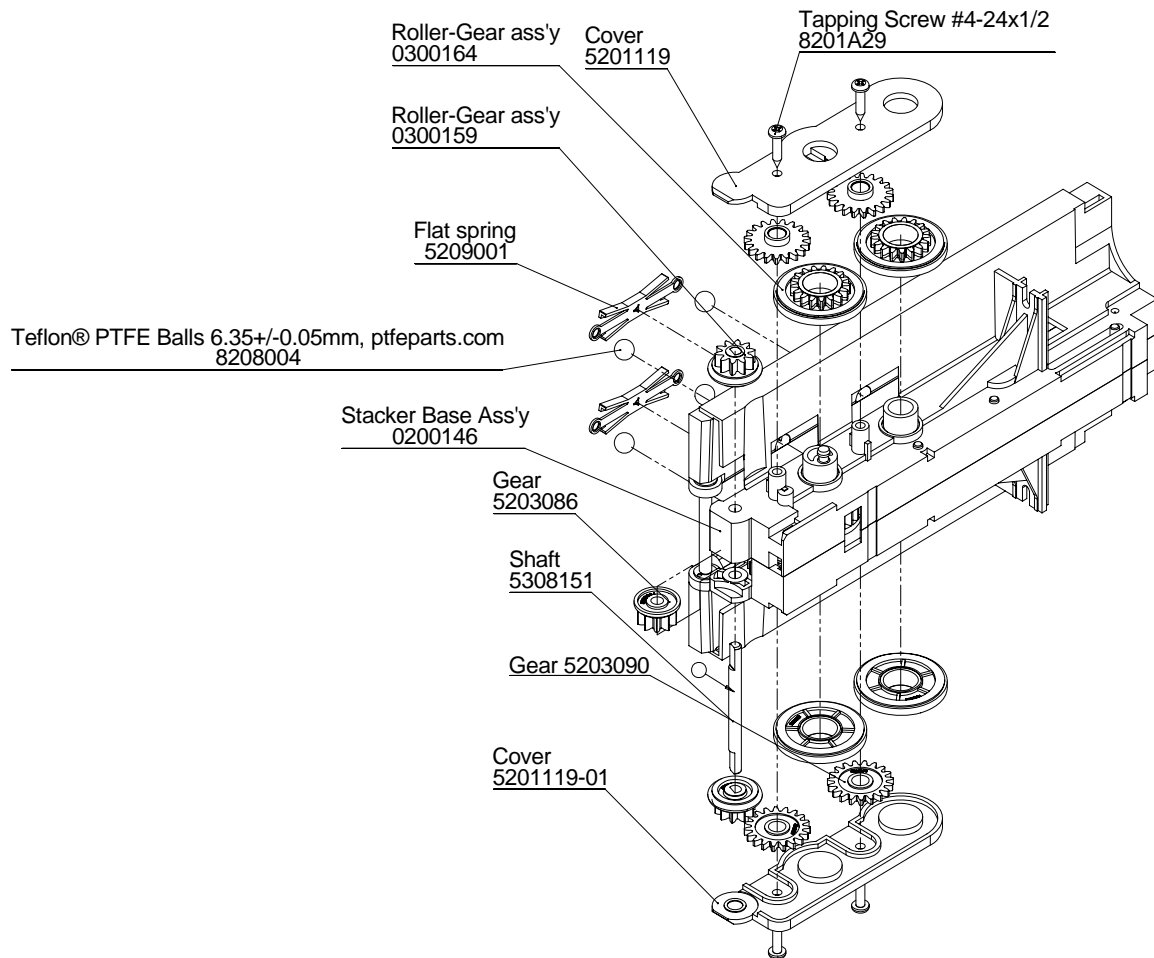


Figure 20.b - Stacker Base Assembly Disassembly



CashCode®

A division of **CRANE** PAYMENT SOLUTIONS



FrontLoad Bill Validator
Part-2 Service Manual

Cassette

5. Remove the screw located on the end of the Stacker, then disassemble the shaft which hold the Platform; this will release the Stacker subassemblies.

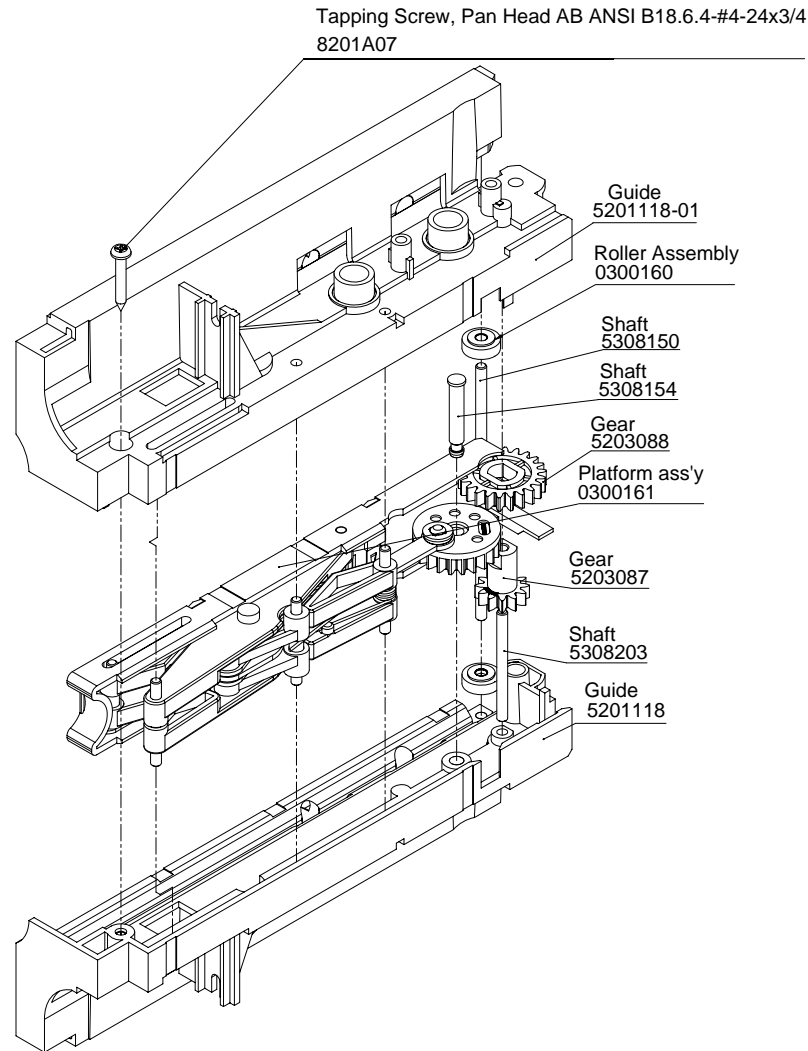


Figure 20.c - Stacker Base Assembly Disassembly

6. Pull all Shafts out of the Platform; this will release all parts from the Platform.

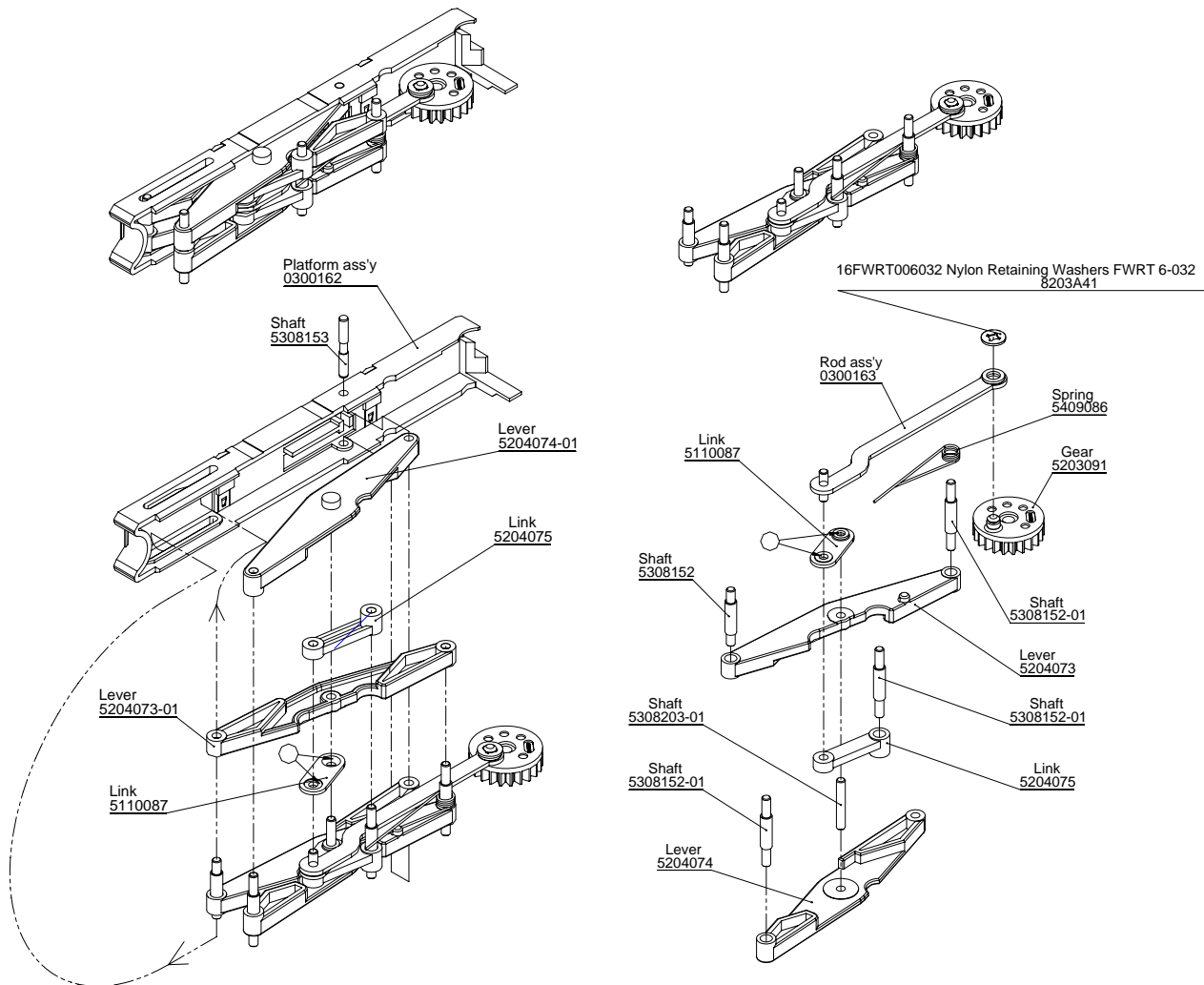


Figure 20.d - Stacker Base Assembly Disassembly



6.3.3 Pressure Plate Removal

Perform the following steps (see figure 21):



In order to remove the Pressure Plate, the Stacker must be removed first.

1. Release the springs from the Cassette's hooks and remove them
2. Slide the Pressure Plate to the end of the Cassette, then lift the Plate and remove it from the Cassette.

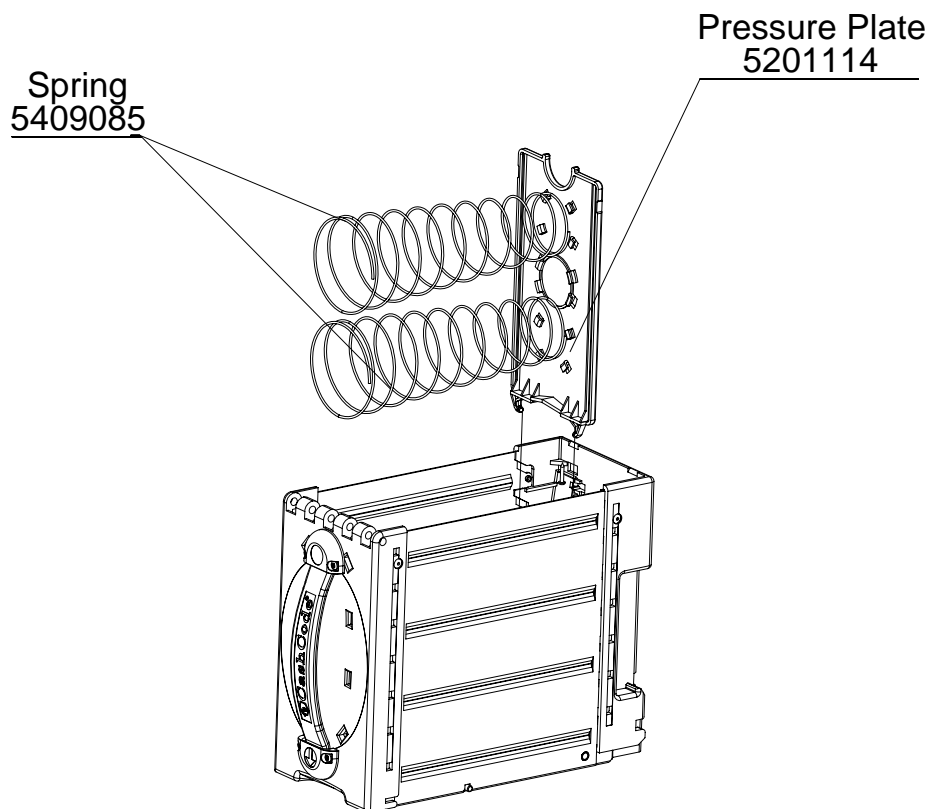


Figure 21 – Cassette Pressure Plate Removal



6.3.4 Cassette Handle Removal

Perform the following step (see figure 22):

1. Unscrew four Handle mounting screws and remove the Covers, then remove the Handle.

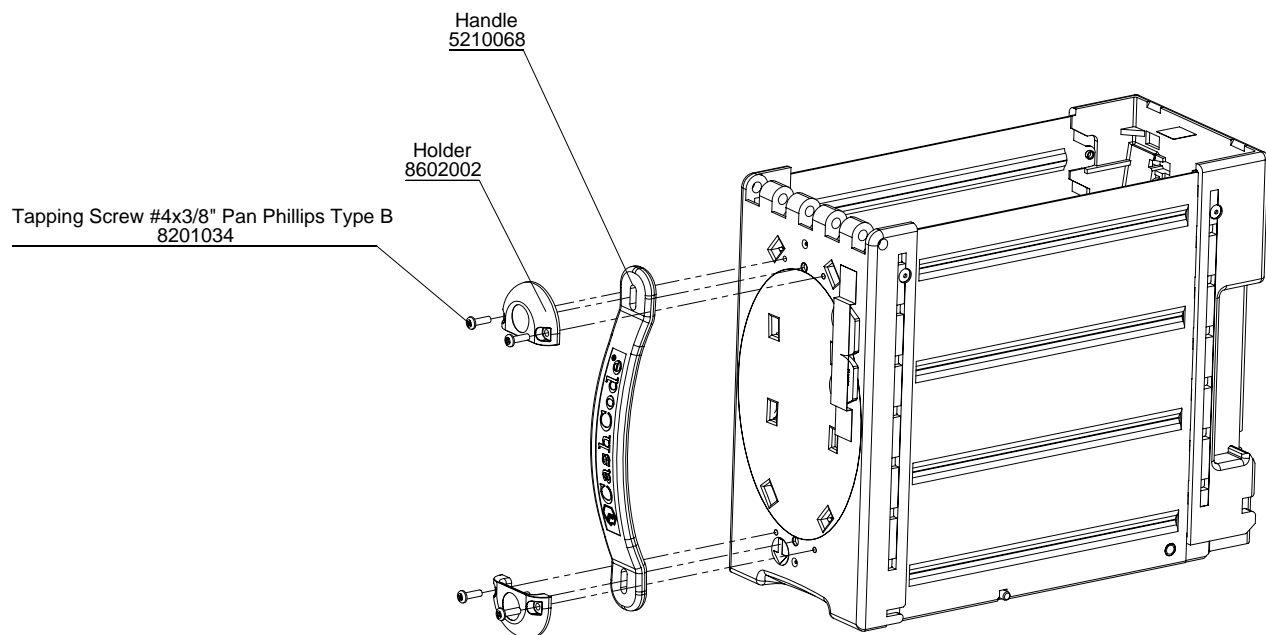


Figure 22 – Cassette Handle Removal



CashCode®

A division of **CRANE** PAYMENT SOLUTIONS



FrontLoad Bill Validator
Part-2 Service Manual

7. How to reach us:

Technical Support Department

CashCode Head Office

Crane CashCode,

(A division of Crane Payment Solutions).

553 Basaltic Road, Concord, Ontario

Canada L4K 4W8

Phone: 1-800-584-2633 (+1-905-303-8874)

Fax: 1-800-593- 2633 (+1-905-303-8875)

E-mail: support@cashcode.com

Website: <http://support.cashcode.com>

Our Service Center: We have service centers worldwide; please visit our website to locate nearby service center:

<http://support.cashcode.com/en/service-locator/index.php>