



G3Asia Gaming Machine User Manuals

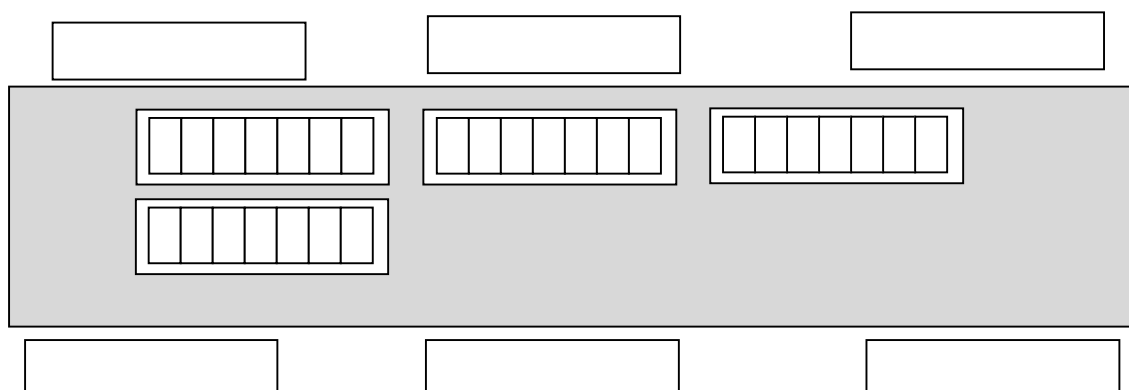
Cabinet Outlook



Button Layout



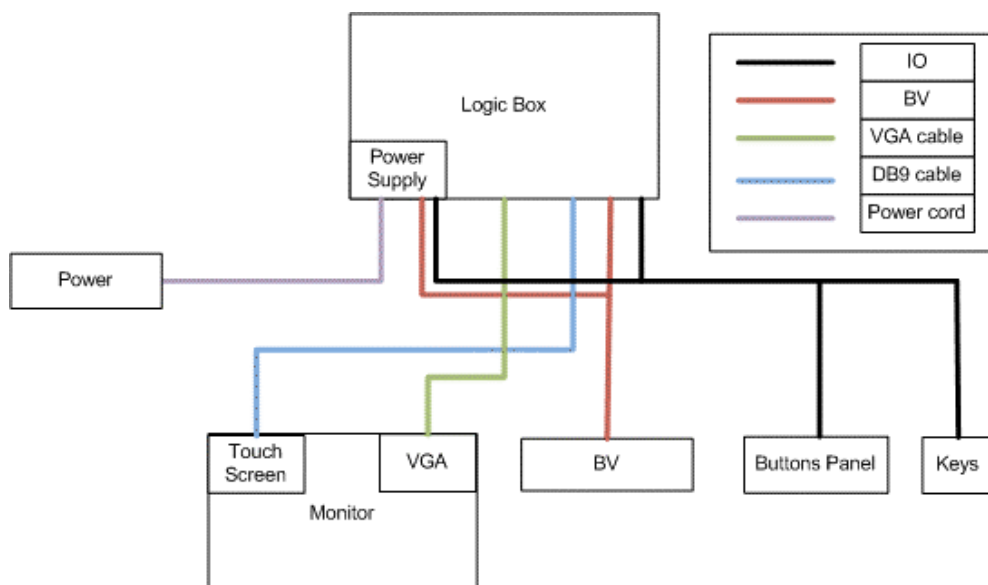
Hard Meter



Specification

Cabinet	Cabinet Style	Upright/Single
	Voltage Setting	110V/220V
Monitor	Monitor type (Upper)	19"
	Monitor type (Main)	19"
	Support Touch Screen	Yes
Computer	CPU	Intel E7400 or above
	RAM	Kingston KVR800D2N5/ 2G or above
	PSU (PC)	Acbel E2 325W ATX or similar
	PSU (non-PC)	Delta 300W Micro ATX or similar
	Graphic Card	Gigabytes GV-N94T-512I or above
Bill Acceptor	Support Model	JCM UBA14
		JCM UBA10
		MEI Cashflow
		MEI AE2631
		Money Control Ardac_Elite
		ICT A6
Printer	Support Model	Ithaca 950
		Future Logic GEN2
Card Reader	Support Model	Magtek IS-65
		Magtek Half Card
Coin Hopper	Support Model	Money Control Universal Hopper
Coin Selector	Support Model	Money Control Condor Plus
SAS	Support Version	6.0x

Harness Diagram



IO mapping

1	Spiral tube
2	22 SWG UL1007
3	12V
4	Candle Middle

Connector			
DB-37 Male			
Pin	Length	Function	Color
1	1430	Service Button	BK
2	1430	Cashout Button	RD
3	1550	Select Line Button	GN
4	1670	Bet Max Button	PE
5	1500	Service Key	BK
6	1200	Main Door Sensor	WE
7	1300	Cash Box Door Sensor	BK
8	1380	Logic Box Door Sensor	BE
9	-	12V	YW
10	-	GND	BK
11	1430	Service Button Lamp	BK/W
12	1430	Cash out Button Lamp	RD/W
13	1550	Select Line Button Lamp	GN/W
14	1670	Bet Max Lamp	PE/W
15	1450	Meter 1	BK
16	1450	Meter 3	RD
17	1450	Meter 5	GN
18	2400	Candle Top	RD
19	-	12V	YW
20	1490	Menu Button	BN
21	1490	Help Button	OE
22	1610	Bet Per Line Button	BE
23	1430	SPIN Button	WE
24	1500	HP Reset Key	BN
25	1300	Cash Door	WE
26	1600	Belly Door	GN
27	-	Reserved Input	-
28	-	GND	BK
29	-	GND	BK
30	1490	Menu Button Lamp	BN/W
31	1490	Help Button Lamp	OE/W
32	1610	Bet Per Line Lamp	BE/W
33	1430	SPIN Button Lamp	GY/W
34	1450	Meter 2	BN
35	1450	Meter 4	OE
36	1450	Meter 6	BE
37	2400	Candle Bottom	OE

1	-	12V	YW
2	-	GND	BK
3	-	GND	BK
4	-	5V	RD

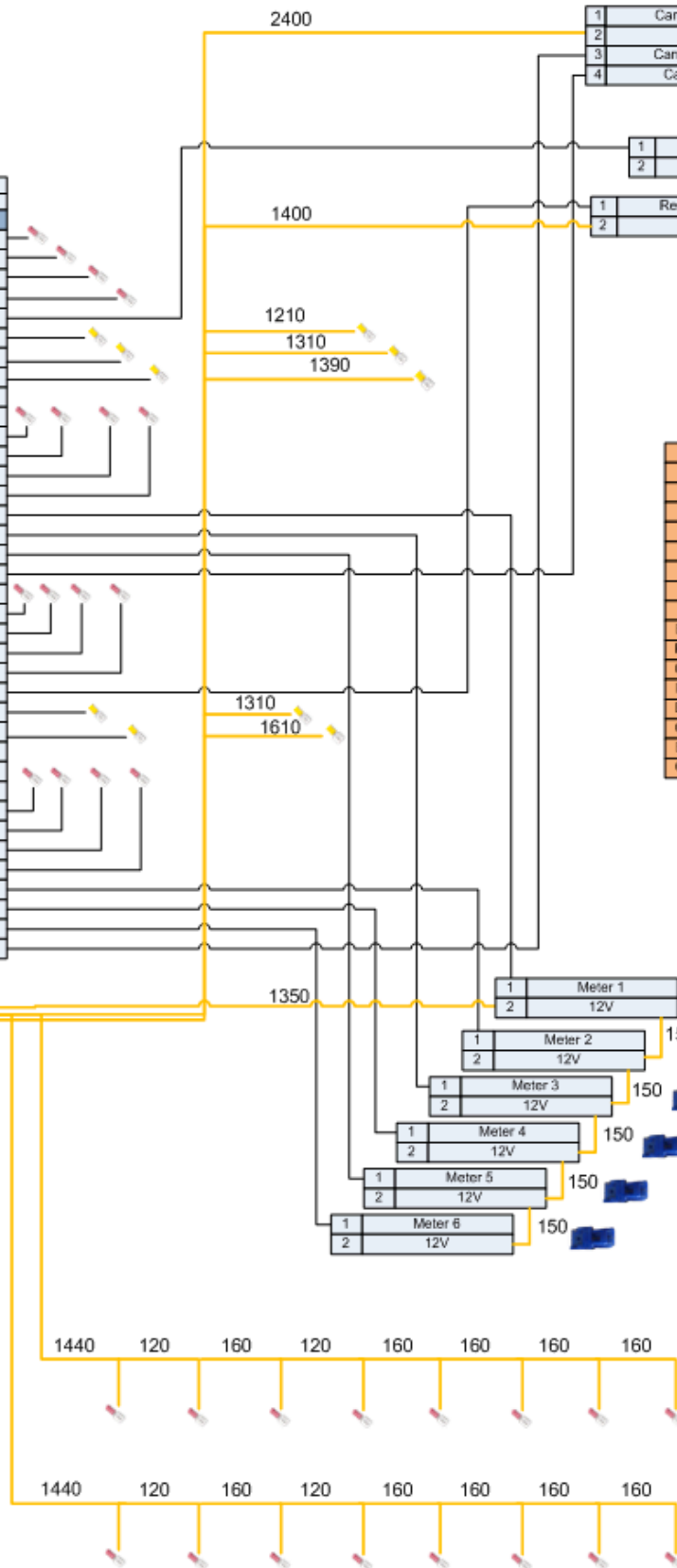
	Housing
	AMP 1-480428-0 or equivalent
	Crimps
	AMP 60618-4 or equivalent
	Housing
	Molex 0039012020 or equivalent
	Crimps
	Housing
	Crimps
	WST D70401BS-2 or equivalent
	Housing
	Crimps
	WST D70604BS-2 or equivalent
	Housing
	Crimps
	Housing
	Molex 0039012041 or equivalent
	Crimps

1	Candle Middle
2	12V
3	Candle Bottom
4	Candle Top

1	Service Key
2	12V

1	Reset Key
2	12V

BK	Black
RD	Red
GN	Green
PE	Purple
OE	Orange
WE	White
BN	Brown
BE	Blue
YW	Yellow
BK/W	Black w/ white
RD/W	Red w/ white
GN/W	Green w/ white
PE/W	Purple w/ white
BN/W	Blue w/ white
OE/W	Orange w/ white
BE/W	Blue w/ white
GY/W	Grey w/ white



Getting Start

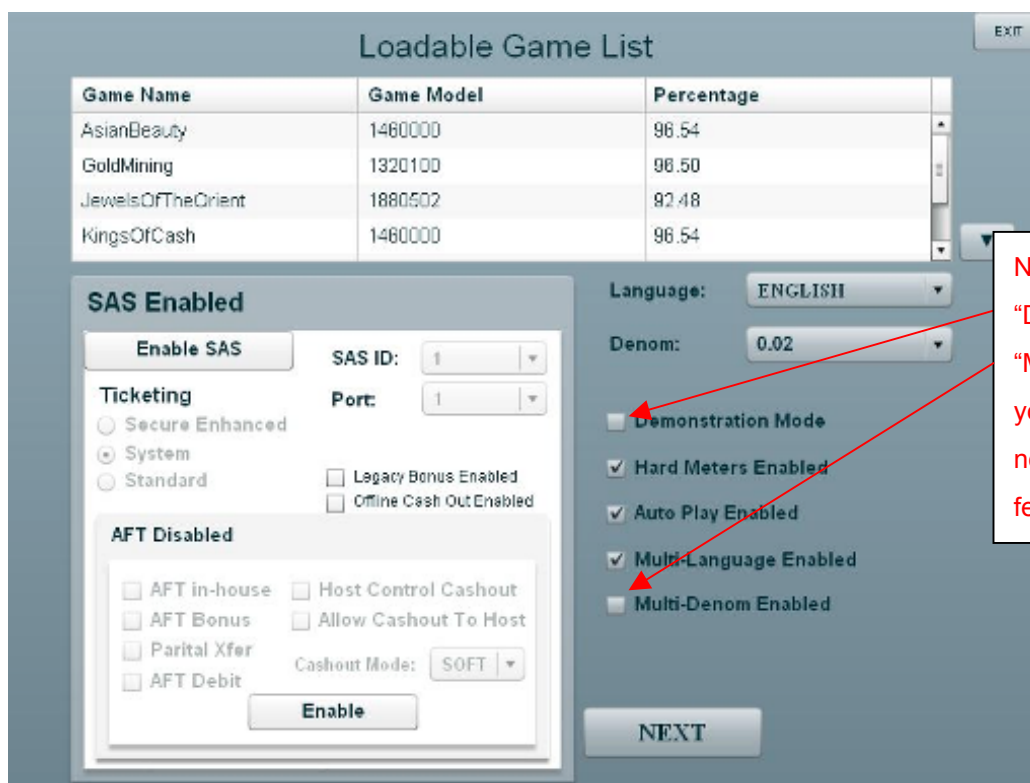
When the gaming machine is first starting up:

1. Upon reboot, enter the password (Default Password: 11111)



A screenshot of a password entry screen. At the top right is an "EXIT" button. The main text says "please enter the password:". Below it is a text input field. Under the input field is a numeric keypad with buttons for digits 1 through 9, 0, and a "CLEAR" button. Below the keypad is a large "ENTER" button. At the bottom center is a "Back" button. At the bottom left is a "Calibration" button. At the bottom right, it says "VOLUME: 2" with "+" and "-" buttons.

2. The Loadable Game List will be displayed. Adjust the game setting from the following screens.



A screenshot of the "Loadable Game List" screen. At the top right is an "EXIT" button. The title "Loadable Game List" is centered. Below it is a table with three columns: "Game Name", "Game Model", and "Percentage".

Game Name	Game Model	Percentage
AsianBeauty	1460000	96.54
GoldMining	1320100	96.50
JewelsOfTheOrient	1880502	92.48
KingsOfCash	1460000	96.54

Below the table are several settings sections. On the left, "SAS Enabled" has an "Enable SAS" button, "SAS ID" (1), and "Port" (1). Below that are "Ticketing" options: "Secure Enhanced", "System" (selected), and "Standard". There are also checkboxes for "Legacy Bonus Enabled" and "Offline Cash Out Enabled". Below that is "AFT Disabled" with checkboxes for "AFT in-house", "AFT Bonus", "Parital Xfer", and "AFT Debit". There is also a "Host Control Cashout" checkbox and "Allow Cashout To Host". A "Cashout Mode" dropdown is set to "SOFT". An "Enable" button is at the bottom of this section. To the right of the SAS section, "Language" is set to "ENGLISH" and "Denom" is set to "0.02". Below these are checkboxes for "Demonstration Mode", "Hard Meters Enabled" (checked), "Auto Play Enabled" (checked), "Multi-Language Enabled" (checked), and "Multi-Denom Enabled". At the bottom center is a "NEXT" button.

NOTE: DO NOT CLICK "Demonstration Mode" and "Multi-Denom Enabled" if your gaming machine does not supported those features.

EXIT

Ticket Printer Enabled

Enable Printer

Serial Port: 6

Printer Type: ITHACA_950

BV Enabled

Disable BV

BV Port: 3

BV Type: JCM_UBA14_ID003_SG

Voucher In Limit: 3000000 cents

Voucher Out Limit: 1000000 cents

Pay Limit: 9999999 cents

Hard Tilts

☐ Stacker Full

☐ SAS Down

☐ Paper Out

Back

NEXT

Hard Tilts

- The games is force to stop and show black screen in these situation if it is clicked

Pay Limit

- It will force a handpay if the winning amount is over the Pay Limit setting.

Location: LOCATION

Address 1: ADDRESS1

Address 2: ADDRESS2

Ticket Title: GAMING VOUCHER

Machine ID: ACS Credit Limit In Cents: 9999999

Asset NO:

1 2 3 4 5 6 7 8 9 0 - = Backspace

Tab Q W E R T Y U I O P [] \

Cap Lock A S D F G H J K L ; ' Enter

Shift Z X C V B N M , . /

Space

Back Game Start

Credit Limit in Cents

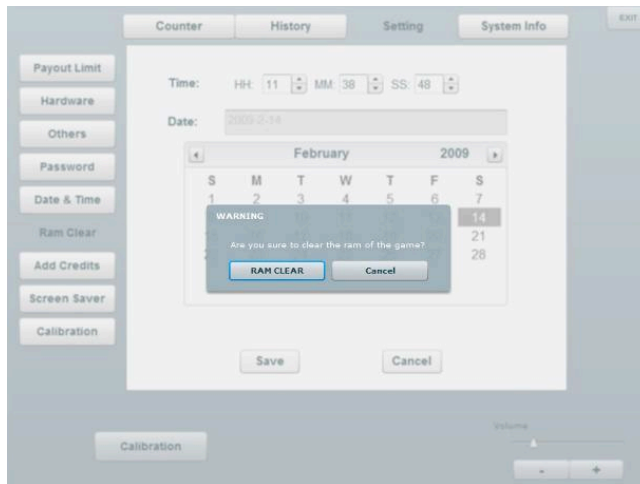
- To restrict the amount in a machine. Banknotes are rejected if the balance is over the limit

Assets NO.:

- Machine ID

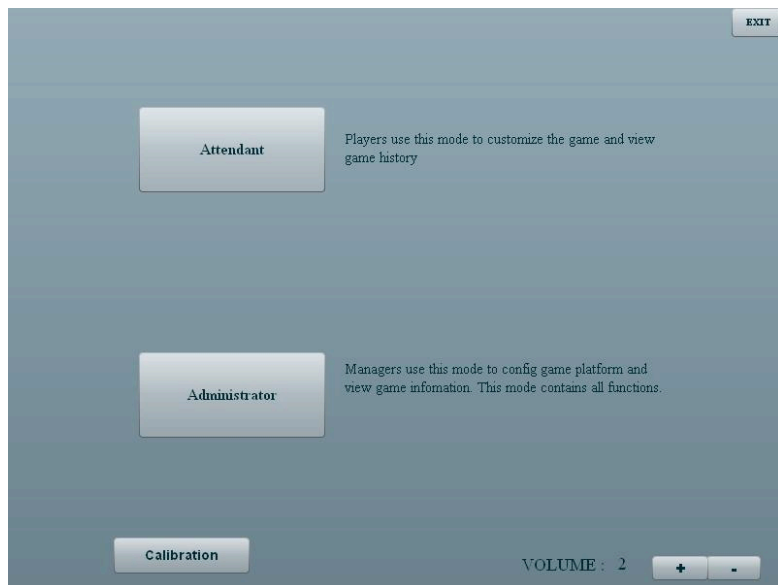
How to Change Games

1. Turn the service key for the Service menu
2. Choose Administrator->Setting->Ram Clear



3. Press "Ram Clear". **Note that all data will be erased.**
4. Follow the Game Selection procedure to restart the game.

Service Menu (Enter by turning the Service Key at any time)



Attendant

- To provide basic information about the gaming machine

Administrator (Password Required)

- To adjust or to change the game setting and provide detail meters reading.

Volume setting

- To adjust the game volume
-

Calibration

- To calibrate the touch monitor (press "2-pt Calibrate" to do calibration)

EXIT

- To exit the current screen.

“Attendant” Screen Shots

The Counter screen displays the following information:

- Denom:** \$0.02
- Cashable Credits:** 0
- No-Restricted Credits:** 0
- Restricted Credits:** 0
- Credit Meter:** 0 Credits
- In Currency:** \$0.00
- Residual Cash:** \$0.00
- HandPay Amount:** \$0.00

Buttons on the left: Hand Pay, Game Meter, SAS Meter. Buttons at the top: Counter, History, EXIT. Buttons at the bottom: Calibration, VOLUME: 2, +, -.

Counter

- Hand Pay
- Game Meter
- SAS Meter

History

- Bill In
- Cash Out
- Voucher In/ Voucher Out
- Game Recall
- Event Log
- AFT, AFT Bonus, Legacy Bonus

The History screen displays a table with the following columns: Station ID, Time, Credits Before, Amount, Credits After, and Details. The table is currently empty. Buttons on the left: Bill In, Cash out, Voucher In, Voucher Out, Game Recall, Event Log, AFT, AFT Bonus, Legacy Bon... Buttons at the top: Counter, History, EXIT. Buttons at the bottom: Calibration, VOLUME: 2, +, -.

“Administrator” Screen Shot



Password Page

- default password is 11111

Setting (Password required)

- change/adjust game setting

Payout Limit

- To set the voucher in limit, voucher out limit and Payout limit

Hardware

- To set the configuration of Printer and BV

Others

- To set other configuration such as hard tilts and hard meters enabled etc

Password

- To change the password

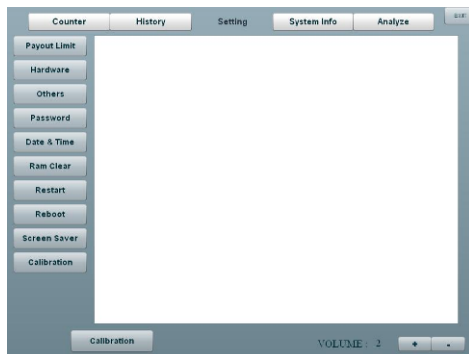
Date and Time

- To set the date and time

Ram Clear

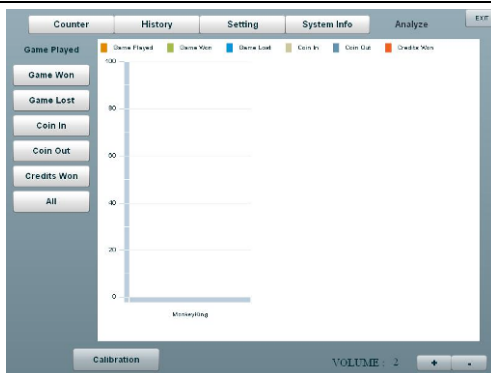
- To clear all setting including meters.

Screen Saver



System Info (Password required)

- Show the information of game such as Game name, Expire time and others.



Analyze (Password required)

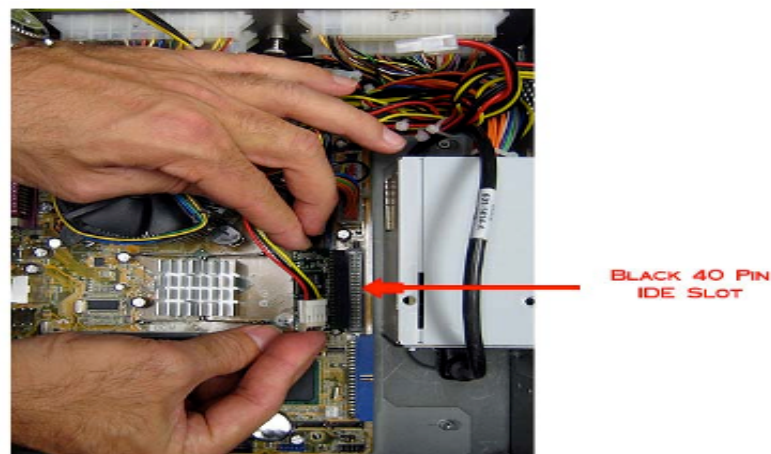
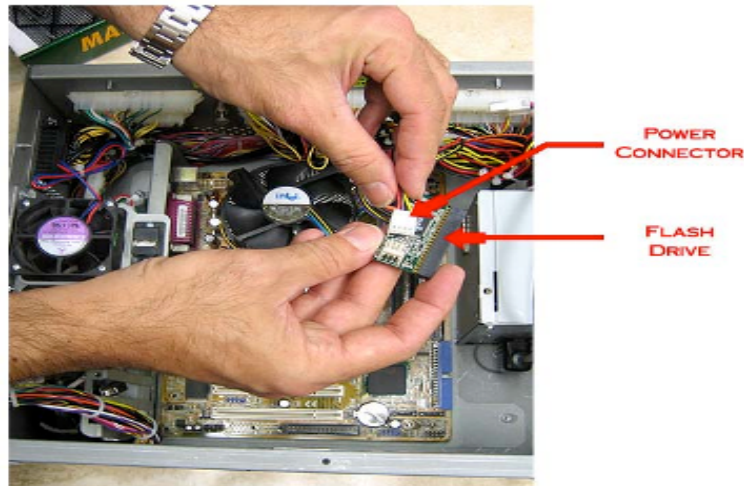
- It contains various reports about the performance of the gaming machine since the last RAM CLEAR.

If the gaming machine is multi-game enable, the chart can display meters of all games.

Game Chip Replacement

If a change of Game Chip is necessary (library upgrade), please take the following action:

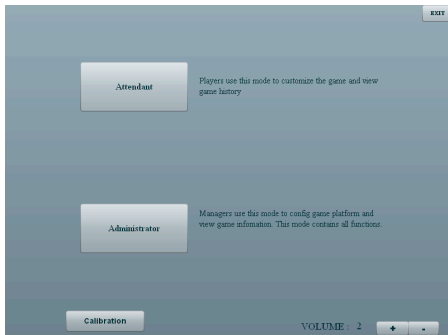
1. Open the slot door.
2. Remove the top cover of the logic box.
3. Remove the existing game chip by pulling up the flash hard drive chip located in the IDE port on the motherboard
4. Unplug the power connector from the IDE drive and plug the power connector into the new replacement drive
5. Check the bottom of the new chip and line up the missing pin on the IDE port
6. On the motherboard, with the plastic pin plug on the drive and carefully insert drive into the IDE port.



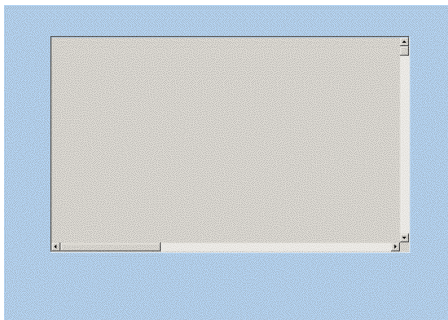
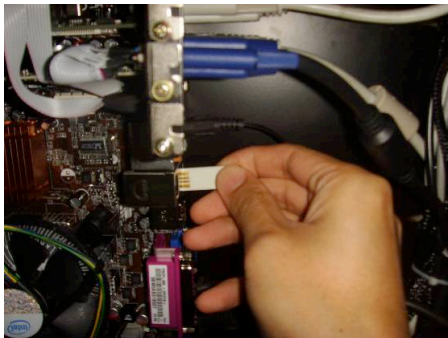
Game Update

NOTE : All meters will be reset after update

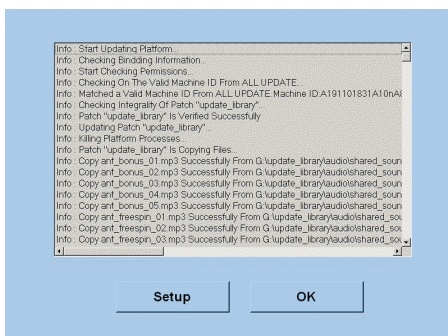
1. Prepare a **EMPTY** USB drive
2. Unzip the update_patch and transfer all files to the USB
3. Key in to the Service Menu



4. Plug the USB drive. The update will be proceeding automatically.



5. Press "OK" after the update. The machine will be restarted



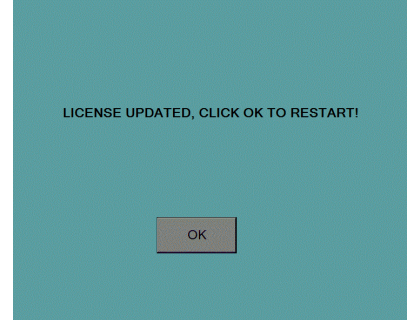
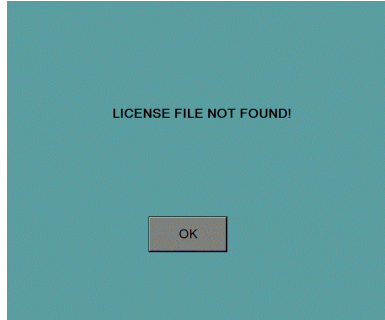
Note: Remember to **UNPLUG** the USB drive

6. Update process is finished.

Game License Expiration

The following message will appear if the game license is expired.

Please contact G3Asia to obtain a new license file immediately. The gaming machine is malfunction and blue screen will appear at any time.



To update the license file using a G3 USB key, you may:

- Plug a G3 USB key and wait for few seconds until the "LICENSE UPDATED, CLICK OK TO RESTART!" is shown.
- Click OK to restart the machine and unplug the USB key.

The license is updated in the next game loading

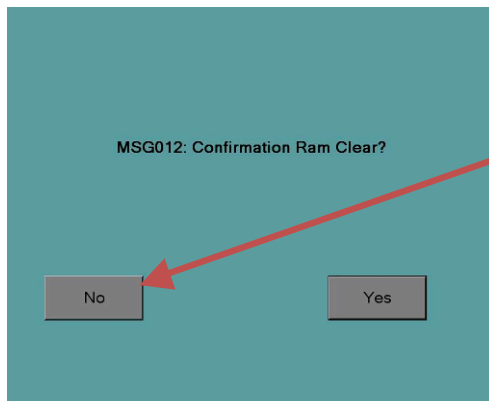
Demonstration Mode

If a black screen appears after Demonstration mode is selected, it means that the Demonstration Mode is not support in your Gaming Device. Please take the following steps to restart the machine.



Press “R” during game loading

Note: “R” shows up in few seconds during game loading.
Restart the game if it is gone



Press YES when “Confirmation Ram Clear” is shown

Recycle the power and it will be back to the password page and do a setup again

Error Messages

MSG001	Contact Manufacture For Lic information	License is necessary to update
MSG004	Missing Stacker	Check the BV stacker
MSG006	Opening Belly Door	Check the belly door and related cable
MSG007	Opening Cash Box	Check the cash box and related cable
MSG008	Opening Logic Box	Check the logic box and related cable
MSG009	Opening Slot Door	Check the slot door and related cable
MSG011	Reset Stacker Meter	Stacker Count will be reset if press "yes"
ERR005	Missing BV Connection	Check the BV cable
ERR006	BV Jam	
ERR007	Missing BV Service	Power Recycle.
ERR008	Missing I/O Card Service	
ERR009	Missing I/O Service	
ERR022	Missing Authorization	Please contact G3 support hotline for license support.
ERR023	Authorization Check Fail	
ERR024	Authorization Misused	
ERR025	Authorization Check Error	
ERR026	Authorization Update Fail	
ERR102	No more Credit	The balance is over the pre-set limit.
ERR103	HandPay: Exceed IRS Limit	Turn the reset key to clear the handpay. Alternatively, you may clear the handpay the service menu
ERR118	HandPay: Exceed Credit Limit	
INFO005	HandPay: No Printing	
Others ERROR messages		Please contact G3 support

Contact Information

If you have any question about the G3 Gaming Machine, please contact us via skype or email

Phone: +852 27798828

Skype: g3support

Email: g3asia@glogame.com